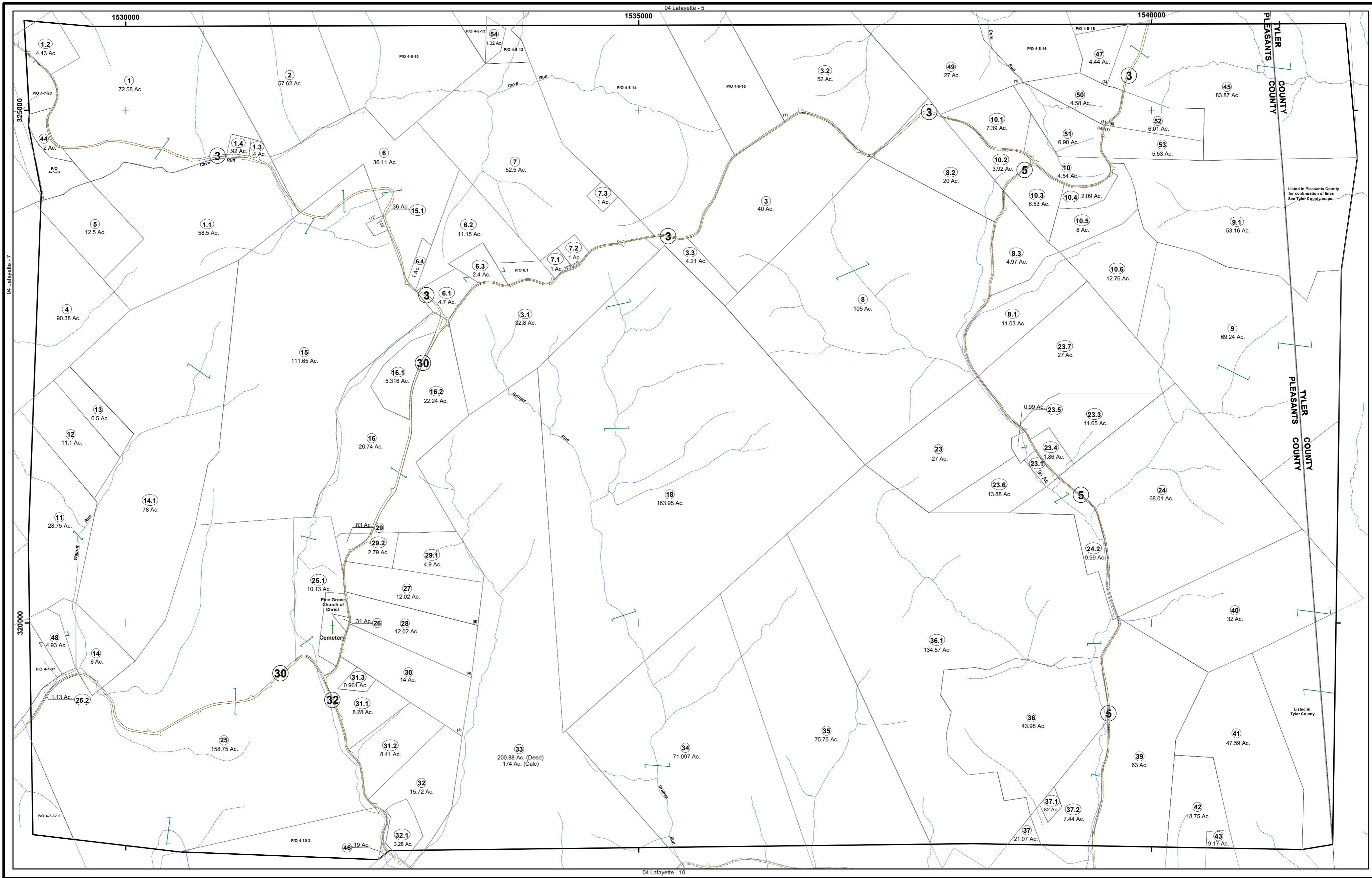


04 Lafayette - 8



**FOR TAX PURPOSES ONLY**

Prepared By:

Vickie Gorrell

Pleasants County Assessor



**Legend**

Property Line	—————	Original Lot Line	-----
Edge of pavement or roadway	-----	Deed lot number (in parenthesis)	(15)
Corporation line	-----	Parcel or index number	(15)
District line	-----	Improvement	○
County Line	-----	Railroad	+++++

**Restriction**

"All finished tax maps created under the provisions of legislation are the property of the county assessor who created them and the reproduction, copying, distribution, sale, or lease of such tax maps or copies thereof without the written permission of the Pleasants County Assessor is prohibited by law." The State Department of Revenue is hereby designated as an agent for all counties for the purpose of sale, reproduction and distribution of the tax maps.

**Key Map**

4	5	-
7	8	-
9	10	-

**PLEASANTS COUNTY - WEST VIRGINIA**  
Office of Assessor

District: 04 Lafayette  
Map No: 8  
Drawn By: Benjamin T Sweeney  
Date: February 1, 2024  
Scale: 1 inch = 615 feet