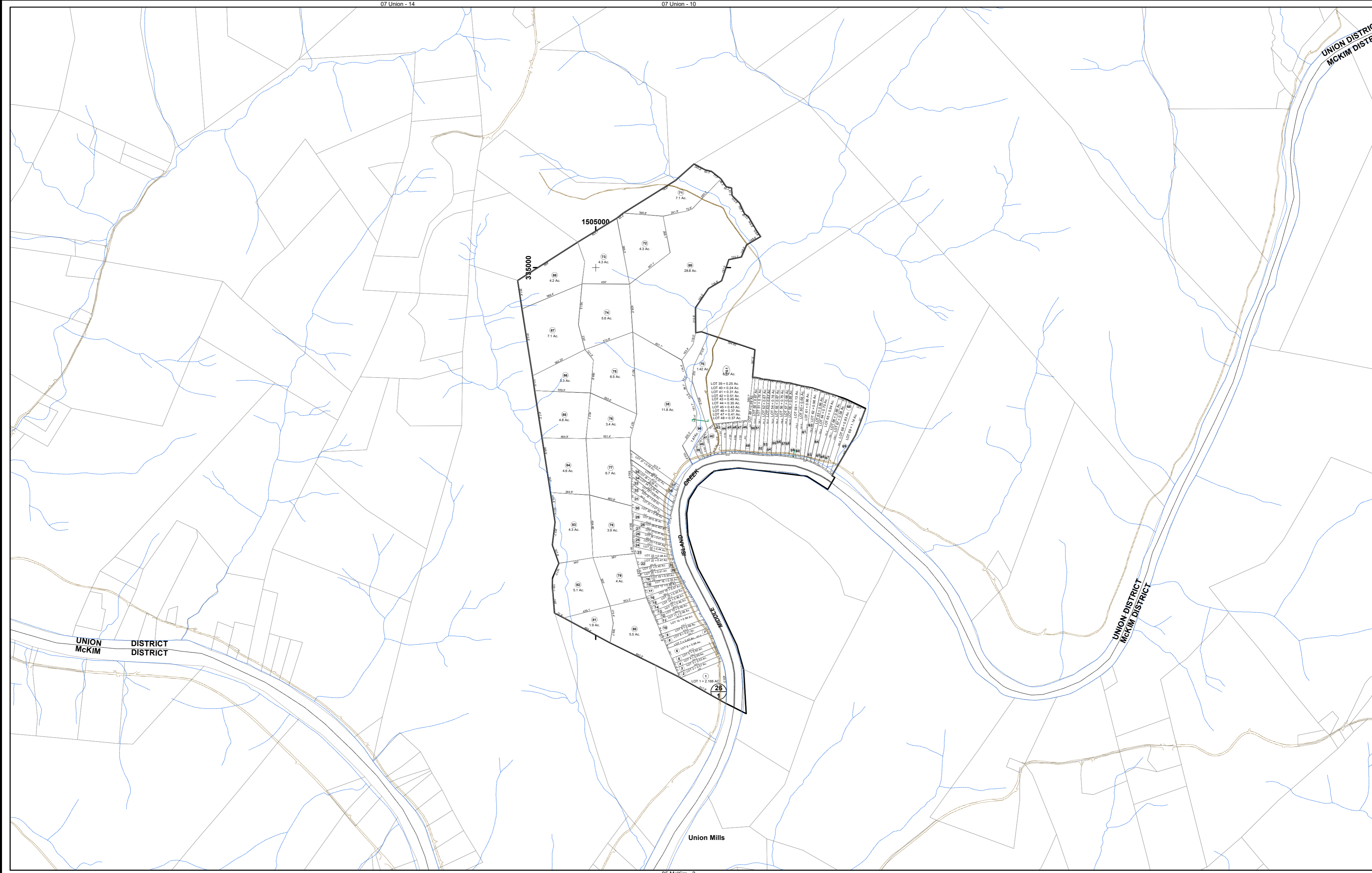


UNION DISTRICT
MCKIM DISTRICT

07 Union - 14A



FOR TAX PURPOSES ONLY

Prepared By:

Vickie Gorrell

Pleasants County Assessor



Legend

Property Line	—————	Original Lot Line	-----
Edge of pavement or roadway	- - - - -	Deed lot number (in parenthesis)	(15)
Corporation line	- · - · -	Parcel or index number	15
District line	- · - · -	Improvement	○
County Line	- · - · -	Railroad	—+—

Restriction

Key Map

9	10	10
14	14A	14
14	M-3	M-3

*All finished tax maps created under the provisions of legislation are the property of the county assessor who created them and the reproduction, copying, distribution, sale, or lease of such tax maps or copies thereof without the written permission of the Pleasants County Assessor is prohibited by law. The State Department of Revenue is hereby designated as an agent for all counties for the purpose of sale, reproduction and distribution of the tax maps.

PLEASANTS COUNTY - WEST VIRGINIA
Office of Assessor

District: 07 Union
Map No: 14A
Drawn By: Benjamin T Sweeney
Date: February 1, 2024
Scale: 1 inch = 615 feet