

THIS DOCUMENT IS A TAX MAP. It is compiled for the purpose of taxation from available record evidence and has not been field verified. It is not a valid survey plat. The existence of data on this map does not imply any "official" status to such data. The Upshur County Assessor's Office assumes no liability that might result from the inappropriate use of this document.

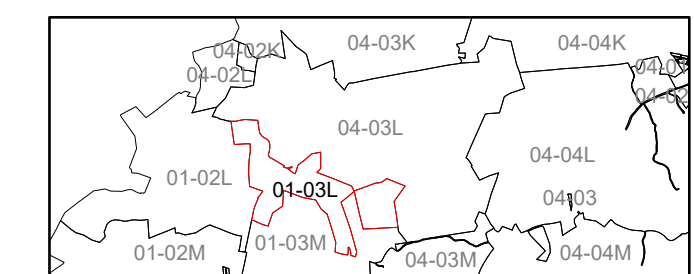
RESTRICTIONS: All tax maps created under the provisions of the reappraisal legislation are the property Assessor of Upshur County, West Virginia and the reproduction, copying, modification, distribution, or sale of any copies thereof without the written permission of the Upshur County Assessor is prohibited by law.

Upshur County Assessor's Office
 Dustin Zickefoose-Assessor
 Junior McGehee-Mapper

Revised 10/26/2018			
Revised 1/30/2019			
Revised 1/30/2021			
Revised 1/30/2022			
Revised 1/16/2024			

STATE OF WEST VIRGINIA
COUNTY OF UPSHUR
 Office of Assessor

Legend	
Property Line	Lot Line (15)
Corporation Line	Parcel Number (99)
County Line	Water
	Railroad



BANKS DISTRICT
 Map: 03L
 Date, Map: 1/16/2024
 Scale: 1" = 400'