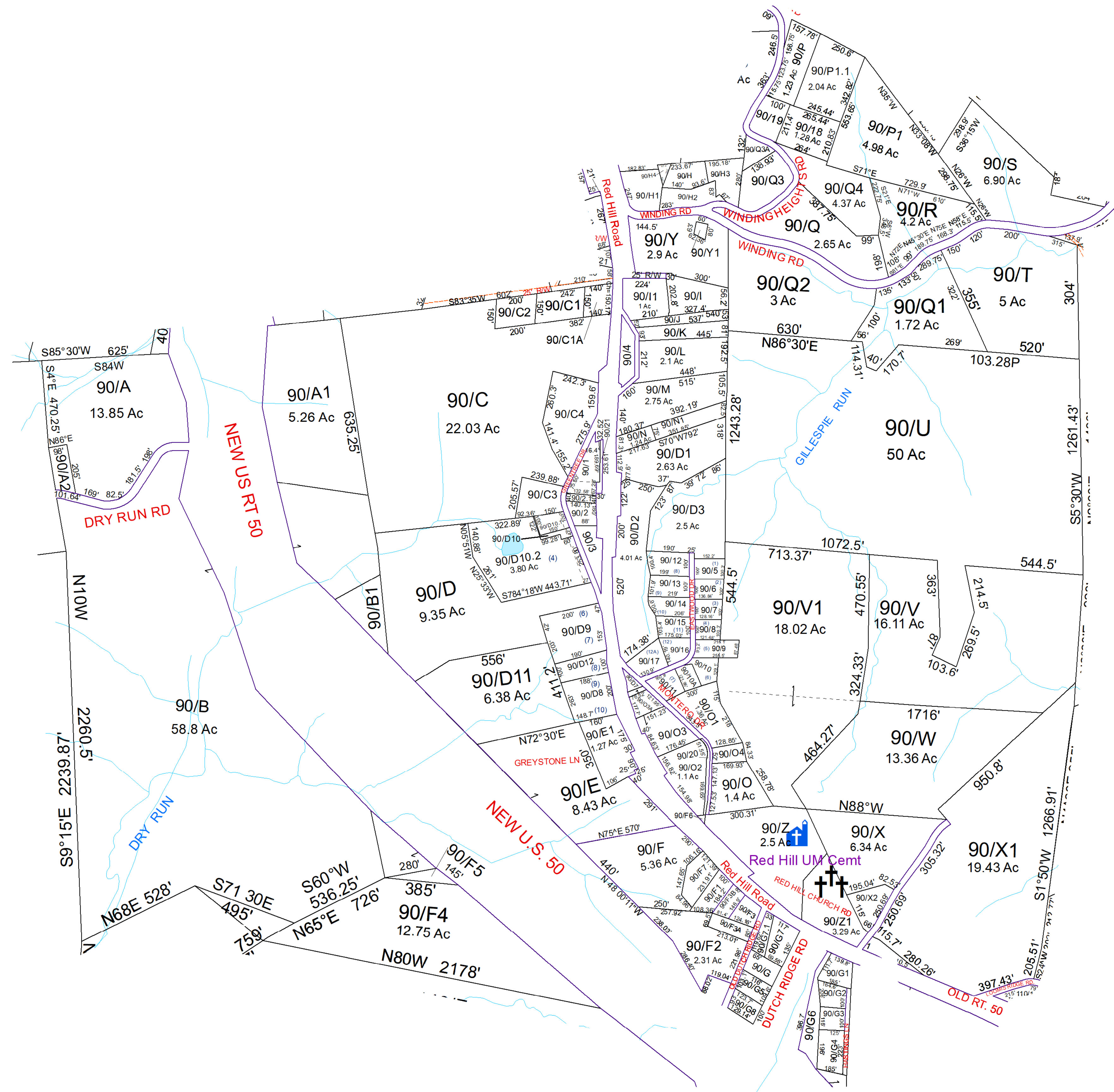
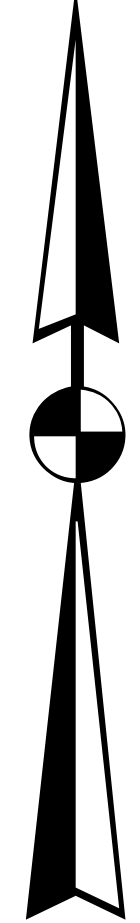


N



For Tax Purposes Only this is not Authoritative Data. This product was developed for taxation purposes and is therefore not suitable for legal, engineering, or surveying purposes. Users of this information should review or consult the primary data and information sources to ascertain the appropriate usage of information. Do not copy

40	40	50
80	90	100
80	140	110

Prepared by: RDS

Legend		
	Deed lot Number (15)	POST OFFICE
	District Number 61	CEMET.
	Parcel or Index Number 1925	LIBRARY
	HOSPITAL	CHURCH
	SCHOOL	AIRPORT
	District Lines	FIRE STATION

Revisions				
1	SV Y1 created 1/09	7	SV F2 revised from plat6/13	13
2	SV 1A added to 1 2/09	8	Pcl H3 created, PD 1/18/2019	14
3	SV 21 created 4/09	9	Pcl H4 created, PD 9/19/2019	15
4	SV N1 created 7/09	10	Pcl 9, V1, revised, PD 8/22	16
5	SV C1A created 7/11	11	Pcl C4 created, PD 5/23	17
6	SV D10.2 created 6/12	12		18

WOOD COUNTY
STATE OF WEST VIRGINIA
Office of Assessor

District	SubDivision
01 - CLAY	
SHEET NO: 90	
Date, Aerial Photography: 2016	Date: 07/10/2023
Scale: 1" = 300'	