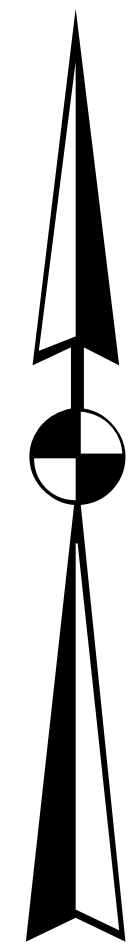
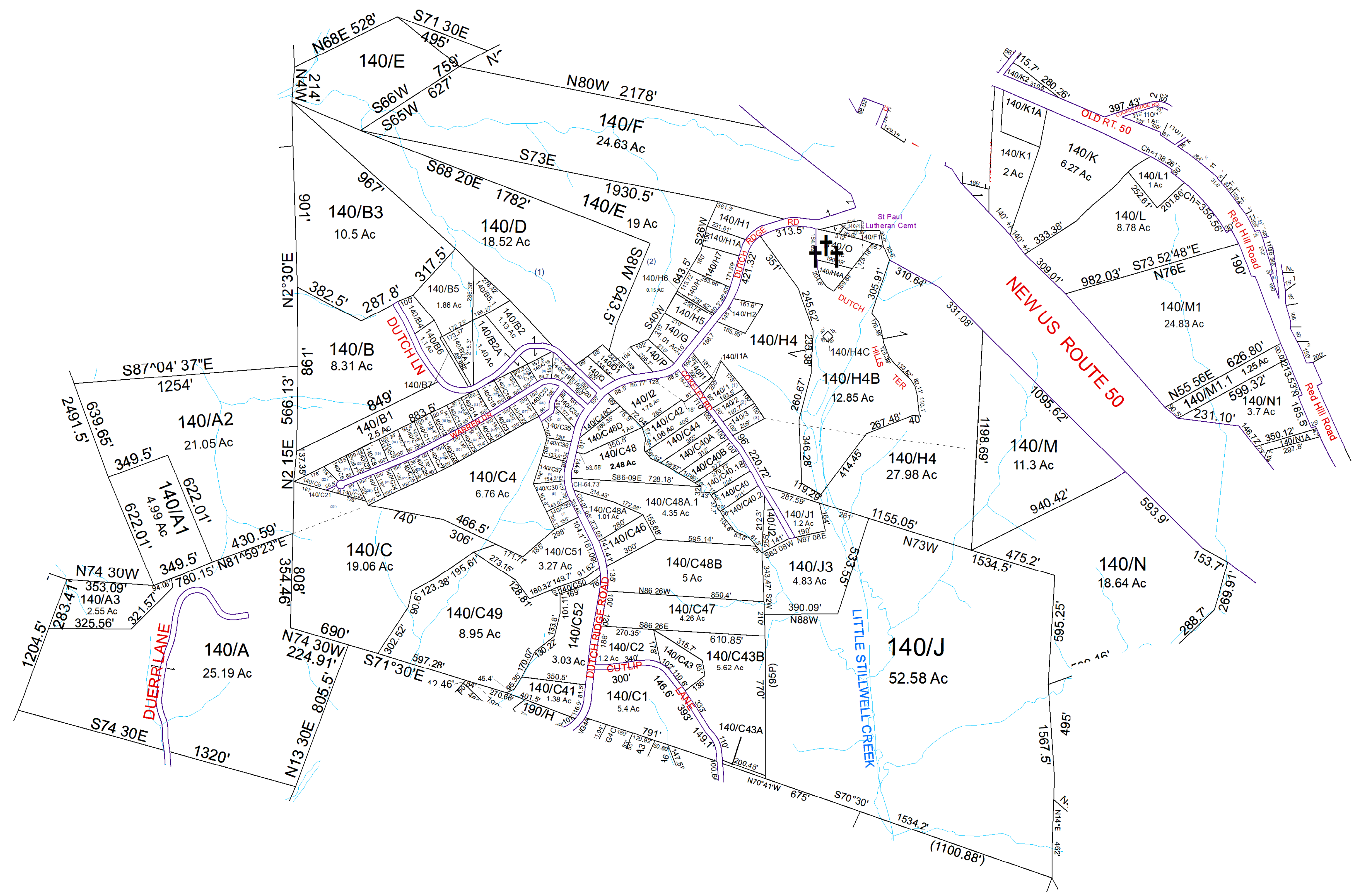


N



Clay- 140



For Tax Purposes Only this is not Authoritative Data. This product was developed for taxation purposes and is therefore not suitable for legal, Engineering, or surveying purposes. Users of this information should review or consult the primary data and information sources to ascertain the appropriate usage of information. Do not copy

80	90	110
130	140	150
190	200	200

Prepared by: RDS

Legend			
	Deed lot Number	(15)	POST OFFICE
	District Number	61	
	Parcel or Index Number	1925	LIBRARY
	HOSPITAL		CHURCH
	SCHOOL		AIRPORT
	District Lines		FIRE STATION

Revisions			
1	SV O1 added to H4B 4/08	7	Pcl C43B created, PD 2/25/2021
2	SV H3 added to O 4/08	8	H4, H4B, M, N, resurveyed, PD 4/22
3	SV 4 created 1/09	9	
4	SV F1 created 1/09	10	
5	SV C48A.1 created 7/10	11	
6	SV L revised from plat 4/13	12	
		13	
		14	
		15	
		16	
		17	
		18	

WOOD COUNTY
STATE OF WEST VIRGINIA
Office of Assessor

District	SubDivision
01 - CLAY	
SHEET NO: 140	
Date, Aerial Photography: 2016	Date: 07/10/2023
	Scale: 1" = 300'