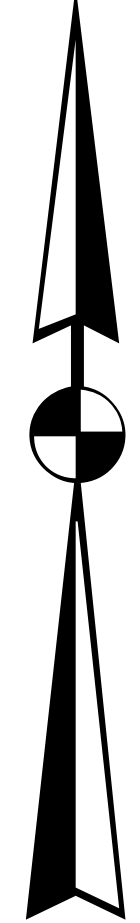
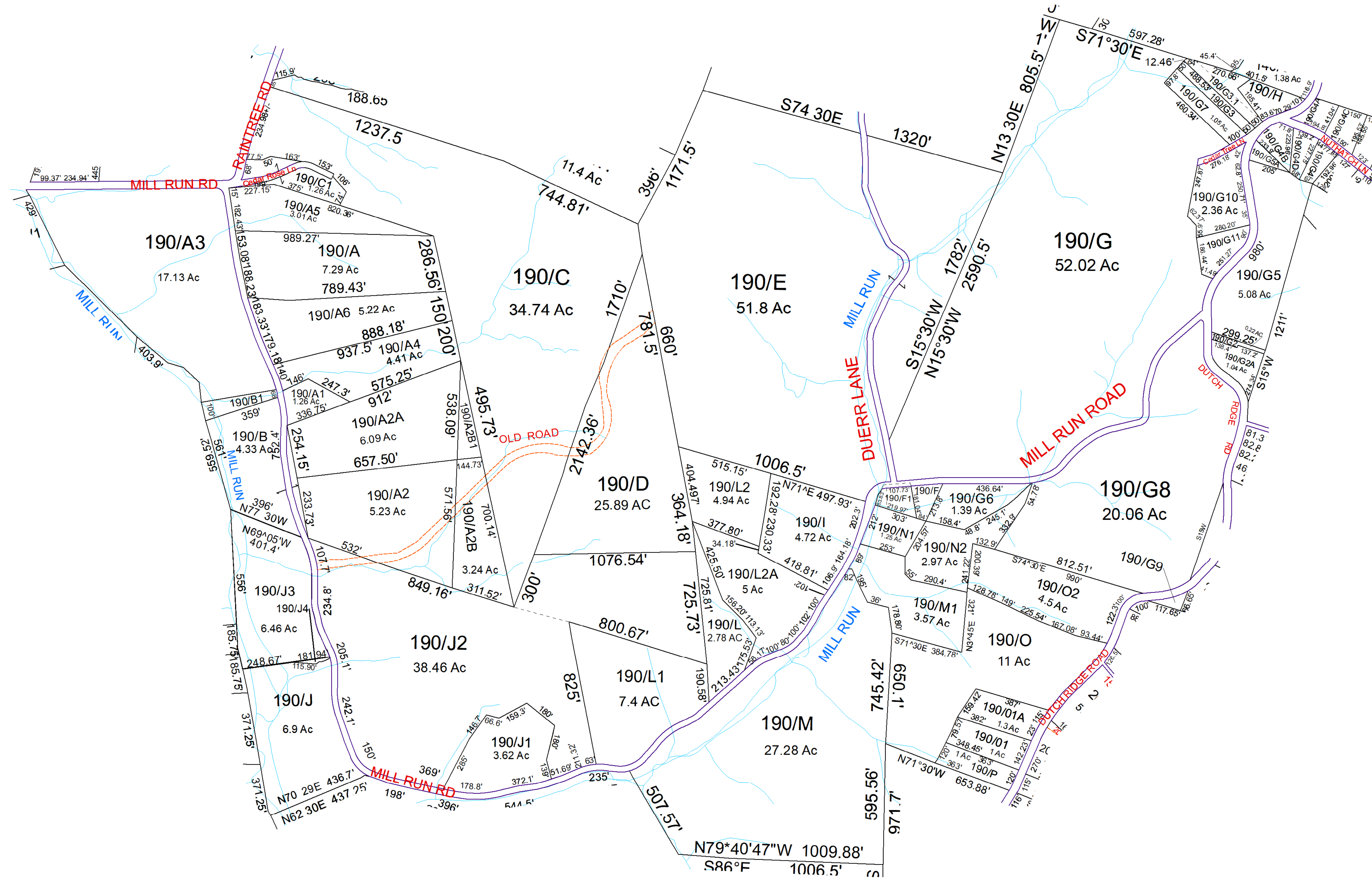


N



Clay- 190



For Tax Purposes Only this is not Authoritative Data. This product was developed for taxation purposes and is therefore not suitable for legal, engineering, or surveying purposes. Users of this information should review or consult the primary data and information sources to ascertain the appropriate usage of information. Do not copy

180	140	140
180	190	200
230	240	200

Prepared by: RDS

Legend		
	Deed lot Number	(15)
	District Number	61
	Parcel or Index Number	1925
	HOSPITAL	
	SCHOOL	
	District Lines	
	POST OFFICE	
	CEMET.	
	LIBRARY	
	CHURCH	
	AIRPORT	
	FIRE STATION	

Revisions		
1	SV U updated by plat 6/09	7
2	SV L2A created 10/12	8
3	SV J4 created 12/13	9
4	SV J2 revised from plat 3/14	10
5	SV H added to G3.1 12/15	11
6	SV F added to F1 10/16	12
		13
		14
		15
		16
		17
		18

**WOOD COUNTY**  
STATE OF WEST VIRGINIA  
Office of Assessor

District	SubDivision
01 - CLAY	
<b>SHEET NO: 190</b>	
Date, Aerial Photography: 2016	Date: 07/10/2023
Scale: 1" = 300'	

Date Saved: 01/12/2023 1:35:15 PM