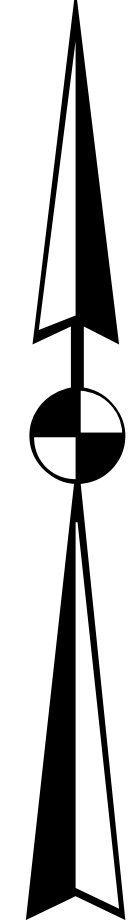
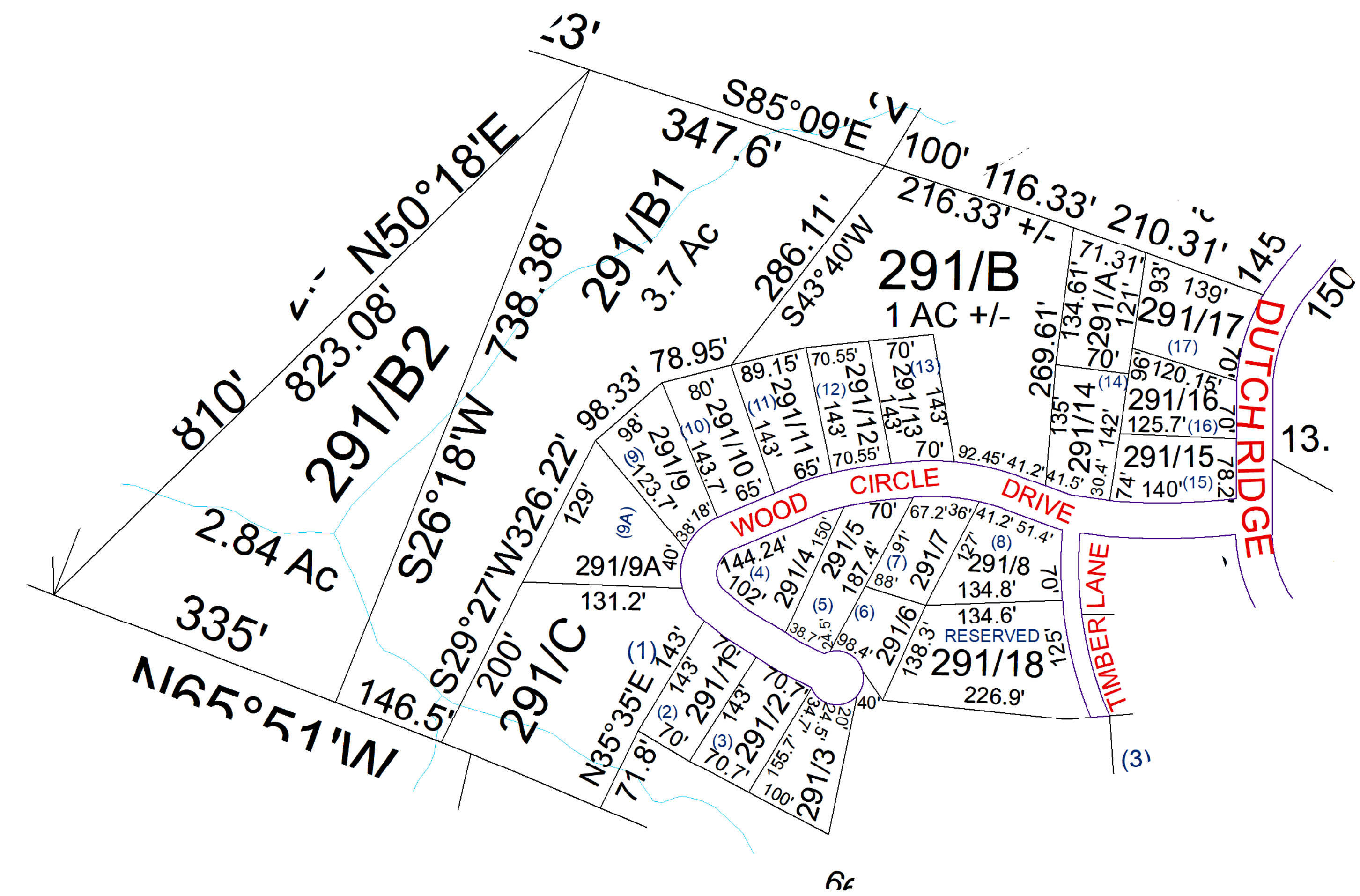


N



Clay- 291



For Tax Purposes Only this is not Authoritative Data. This product was developed for taxation purposes and is therefore not suitable for legal, Engineering, or surveying purposes. Users of this information should review or consult the primary data and information sources to ascertain the appropriate usage of information. Do not copy

290	290	290
290	291	290
290	290	290

Prepared by: RDS

Legend			
	Deed lot Number	(15)	POST OFFICE
	District Number	01	CEMET.
	Parcel or Index Number	1925	LIBRARY
	HOSPITAL		CHURCH
	SCHOOL		AIRPORT
	District_Lines		FIRE STATION

Revisions			
1	7	13	
2	8	14	
3	9	15	
4	10	16	
5	11	17	
6	12	18	

**WOOD COUNTY**  
STATE OF WEST VIRGINIA  
Office of Assessor

District	SubDivision
01 - CLAY VALLEY VIEW ACRES	
SHEET NO: 291	
Date, Aerial Photography: 2016	Date: 07/10/2023
Scale: 1" = 100'	