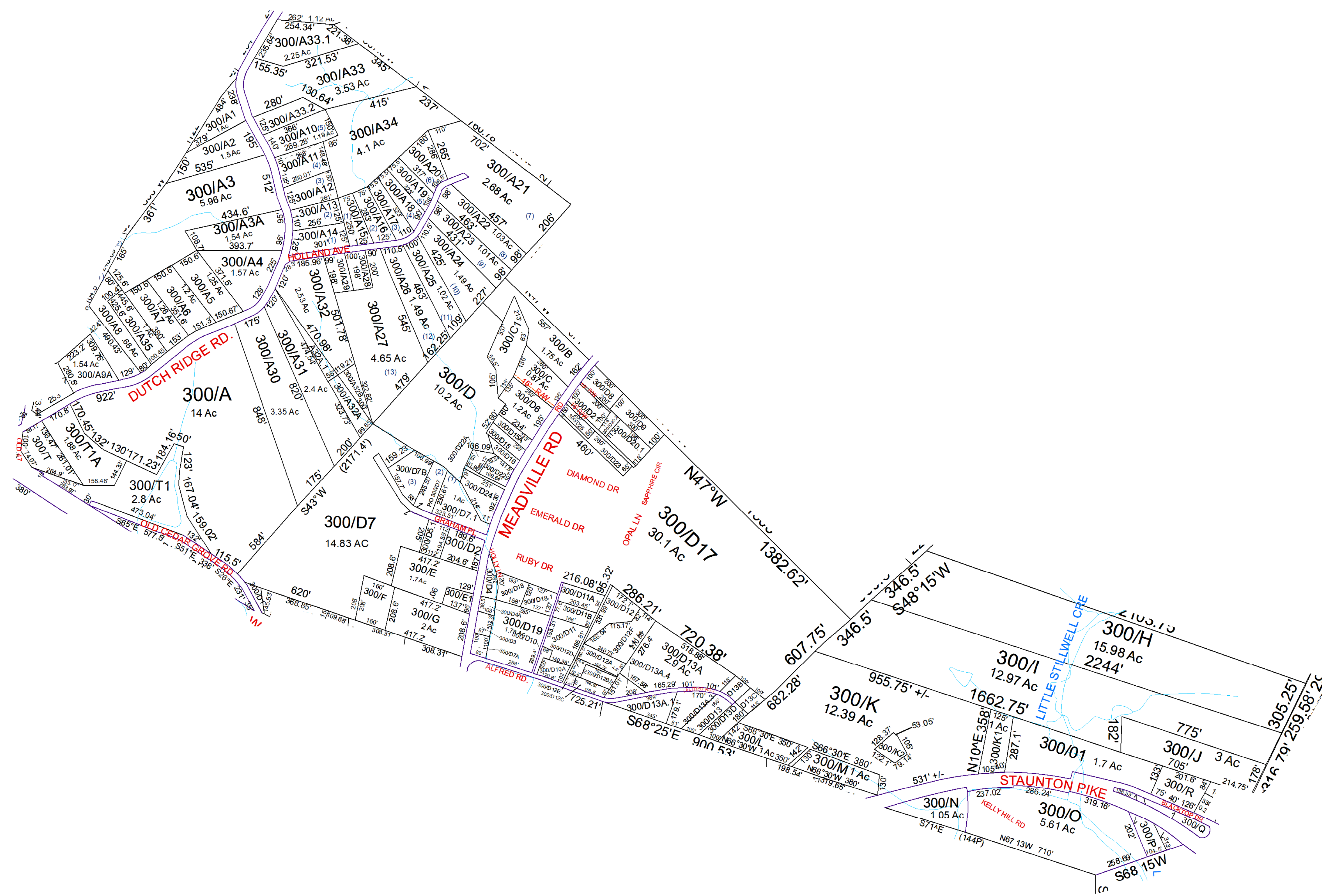
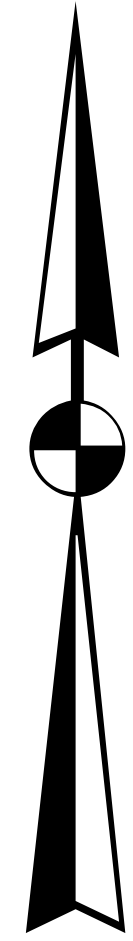


N



For Tax Purposes Only this is not Authoritative Data. This product was developed for taxation purposes and is therefore not suitable for legal, Engineering, or surveying purposes. Users of this information should review or consult the primary data and information sources to ascertain the appropriate usage of information. Do not copy

240	250	330
290	300	330
290	310	320

Prepared by: RDS

Legend			
	Deed lot Number (15)	POST OFFICE	
	District Number 61	CEMET.	
	Parcel or Index Number 1925	LIBRARY	
	HOSPITAL	CHURCH	
	SCHOOL	AIRPORT	
	District Lines	FIRE STATION	

Revisions			
1	SV C1 created 12/08	7	13
2	SV D22A created 2/09	8	14
3	SV K2 revised from plat 07/13	9	15
4		10	16
5		11	17
6		12	18

WOOD COUNTY
STATE OF WEST VIRGINIA
Office of Assessor

District	SubDivision
01 - CLAY	
SHEET NO: 300	
Date, Aerial Photography: 2016	Date: 07/10/2023
Scale: 1" = 300'	