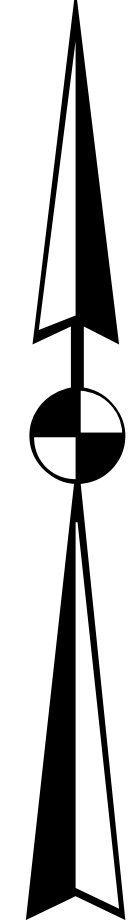
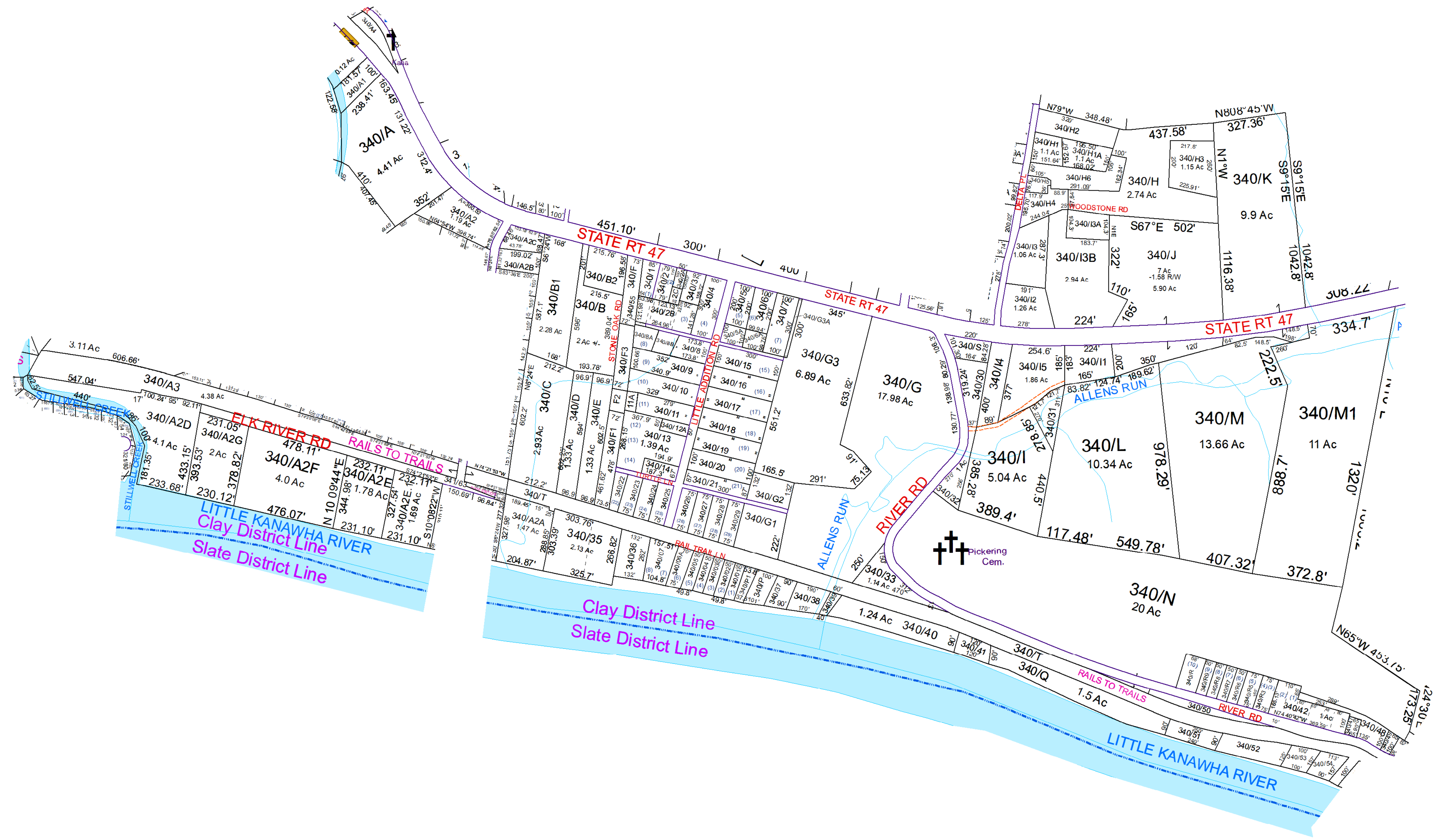


N



Clay- 340



For Tax Purposes Only this is not Authoritative Data. This product was developed for taxation purposes and is therefore not suitable for legal, Engineering, or surveying purposes. Users of this information should review or consult the primary data and information sources to ascertain the appropriate usage of information. Do not copy

320	330	330
320	340	350
321	40	350

Prepared by: RDS

Legend		
	Deed lot Number (15)	POST OFFICE
	District Number 61	CEMT.
	Parcel or Index Number 1825	LIBRARY
	HOSPITAL	CHURCH
	SCHOOL	AIRPORT
	District Lines	FIRE STATION

Revisions				
1	H1A created SV 12/08	7	SV A2E.1 created 9/13	13
2	A2B created SV 4/09	8	RS T Rails to Trails created 3/14	14
3	SV A2C created 1/10	9	SV A2 revised from plat 12/14	15
4	SV A2D & A2E created 10/12	10	SV 3 revised from PB3Pg113 7/16	16
5	SV A2I&A2G created 10/12	11	SV 1.1&P3 addded to 2B 7/16	17
6	SV 6A created 11/12	12	Pcl G3A created, PD 10/4/2019	18

WOOD COUNTY
STATE OF WEST VIRGINIA
Office of Assessor

District	SubDivision
01 - CLAY	
SHEET NO: 340	
Date, Aerial Photography: 2016	Date: 07/10/2023
Scale: 1" = 300'	