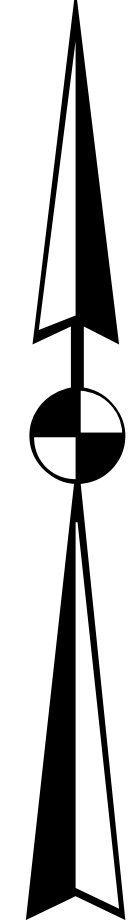
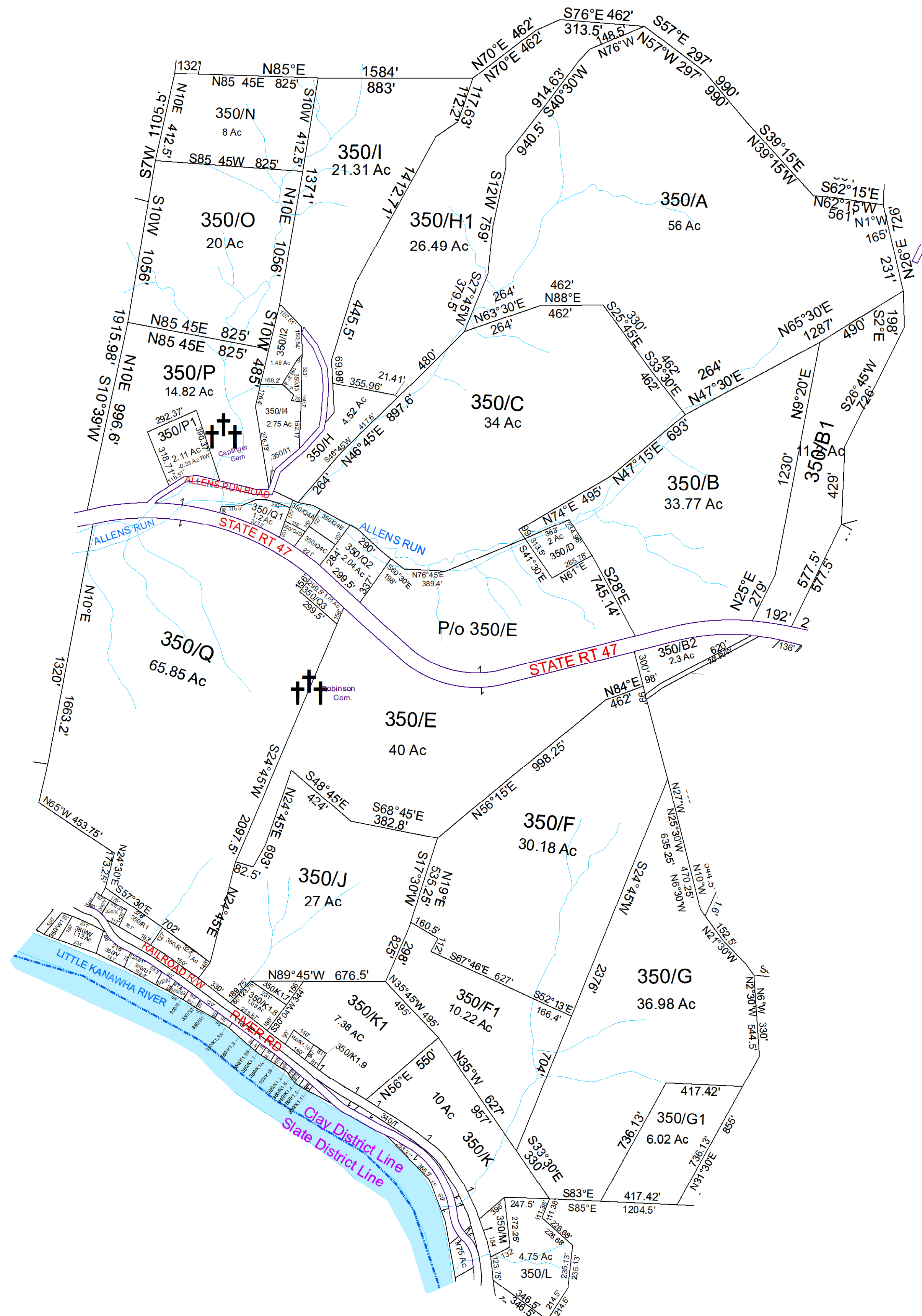


N



Clay- 350



For Tax Purposes Only this is not Authoritative Data. This product was developed for taxation purposes and is therefore not suitable for legal, engineering, or surveying purposes. Users of this information should review or consult the primary data and information sources to ascertain the appropriate usage of information. Do not copy

360	370	370
270	350	370
330	340	40

Prepared by: RDS

Legend		
	Deed lot Number	(15)
	District Number	61
	Parcel or Index Number	1825
	HOSPITAL	
	SCHOOL	
	District Lines	
	POST OFFICE	
	CEMET.	
	LIBRARY	
	CHURCH	
	AIRPORT	
	FIRE STATION	

Revisions			
1	SV K1.3B created 6/13	7	13
2		8	14
3		9	15
4		10	16
5		11	17
6		12	18

WOOD COUNTY
STATE OF WEST VIRGINIA
Office of Assessor

District	SubDivision
01 - CLAY	
SHEET NO: 350	
Date, Aerial Photography: 2016	Date: 07/10/2023
Scale: 1" = 300'	