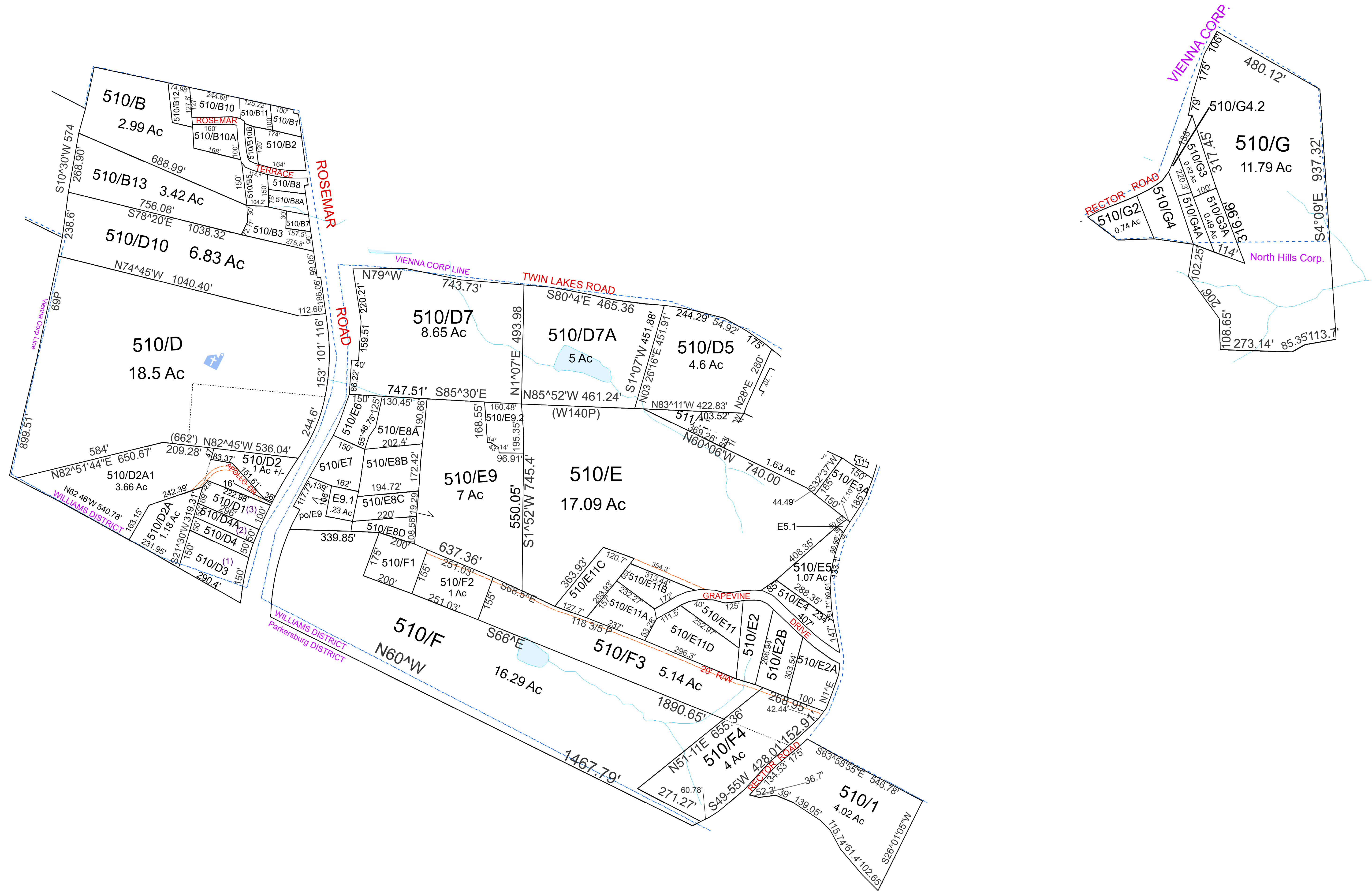


# WILLIAMS - 510



For Tax Purposes Only this is not Authoritative Data  
 This product was developed for taxation purposes and is therefore not suitable for legal, engineering, or surveying purposes. Users of this information should review or consult the primary data and information sources to ascertain the appropriate usage of information. Do not copy

490	35	35
37	510	14
363	110	120

Prepared by: RDS

Legend	
	Previous Deed
	Property
	Railroad Right of Way
	Road and Railroad RW
	Road Easement
	Road Right of Way
	HOSPITAL
	POST OFFICE
	SCHOOL
	District Lines
	CENT.
	LIBRARY
	AIRPORT
	CHURCH

Revisions		
1	Pcl F4 created, 7/09	7
2	Pcl D2A corrected from plat, DB1192/686, 1/13 SV	8
3	Pcl D2A1 created, incl. D1A, 10/14 SV	9
4		10
5		11
6		12
		13
		14
		15
		16
		17
		18

**WOOD COUNTY**  
 STATE OF WEST VIRGINIA  
 Office of Assessor

District	SUBDIVISION
12 - WILLIAMS	
SHEET NO: 510	
Date, Aerial Photography: 2016	Date: 07/13/2023
	Scale: 1" = 300'