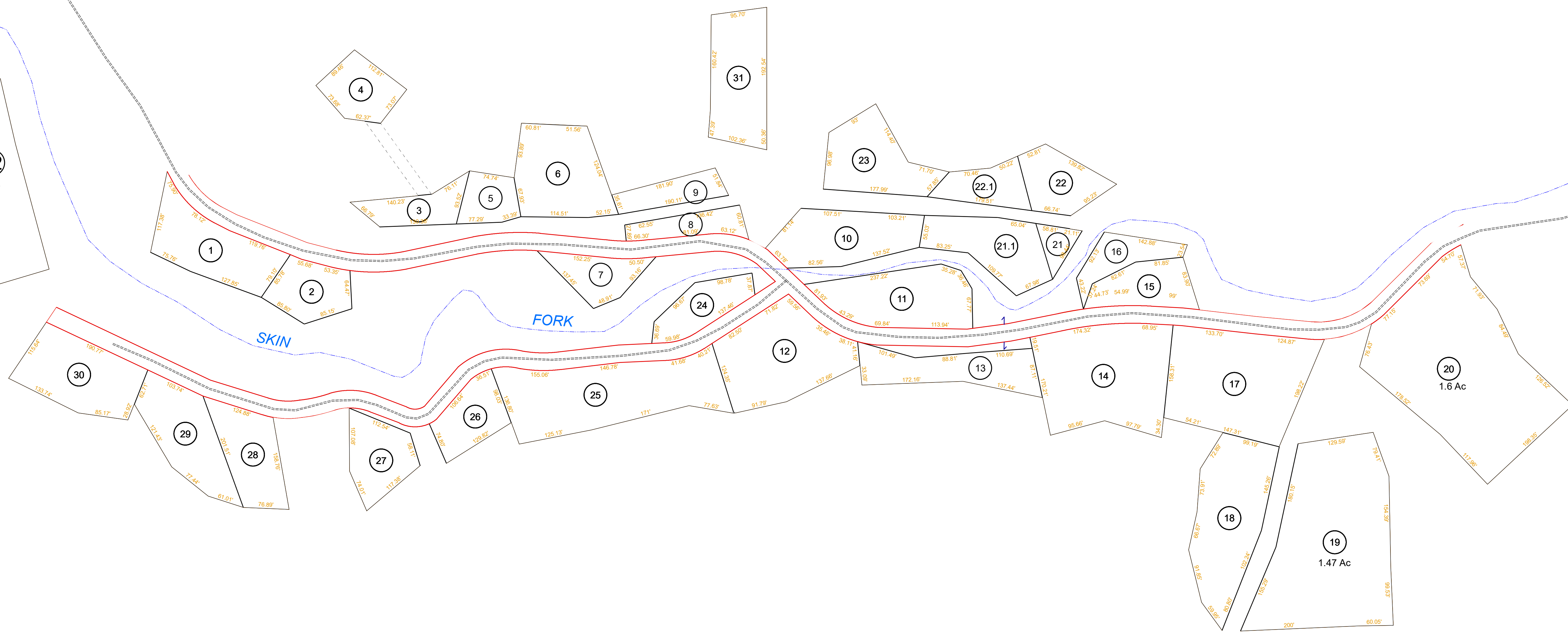




32  
0.9Ac.



**For Tax Purposes Only**

The tax map was compiled for purposes of taxation from available record evidence and has not been field verified. This map is not a valid survey plat and the data on this map does not imply any official status to such data. The State of West Virginia and county assessor's office assume no liability that might result from the use of this map.



Legend	
Deed lot Number (15)	⑮
Parcel or Index Number (9)	⑨
District Number (9)	⑨
Boundary	
BOUNDARYTYPE	
Water	
Previous Deed	
Property	
Right of Way	
Road Easement	
Road Right of Way	

Revisions			
1	7	13	
2	8	14	
3	9	15	
4	10	16	
5	11	17	
6	12	18	

116
116 116A 116
116

**WYOMING COUNTY**  
STATE OF WEST VIRGINIA  
Office of Assessor

District	<b>CENTER</b>
SHEET NO:	116A
Date, Aerial Photography:	November, 1962
Photo No.:	
Date Map:	Sep. 1, 2023
Scale:	1" = 400'