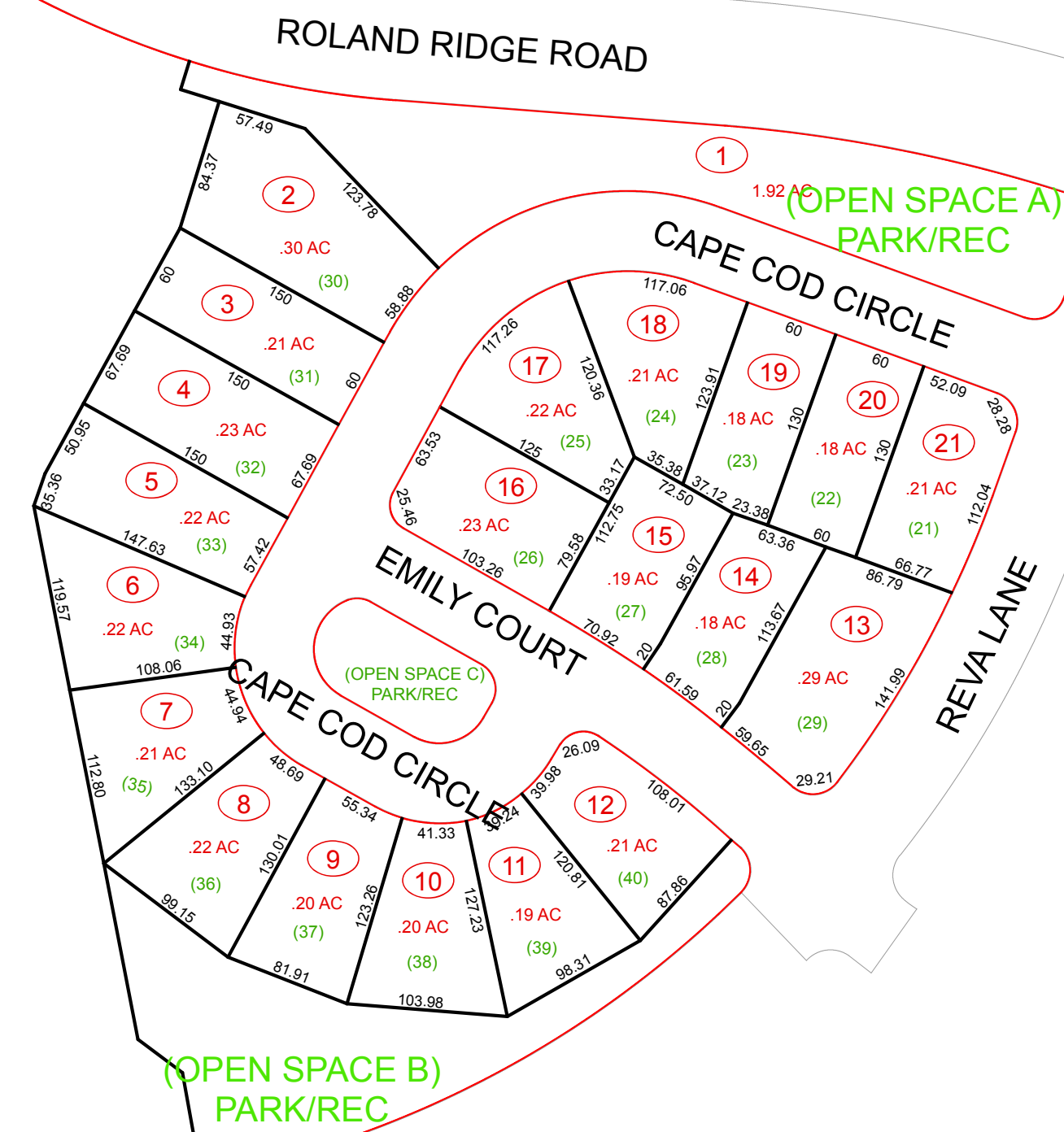
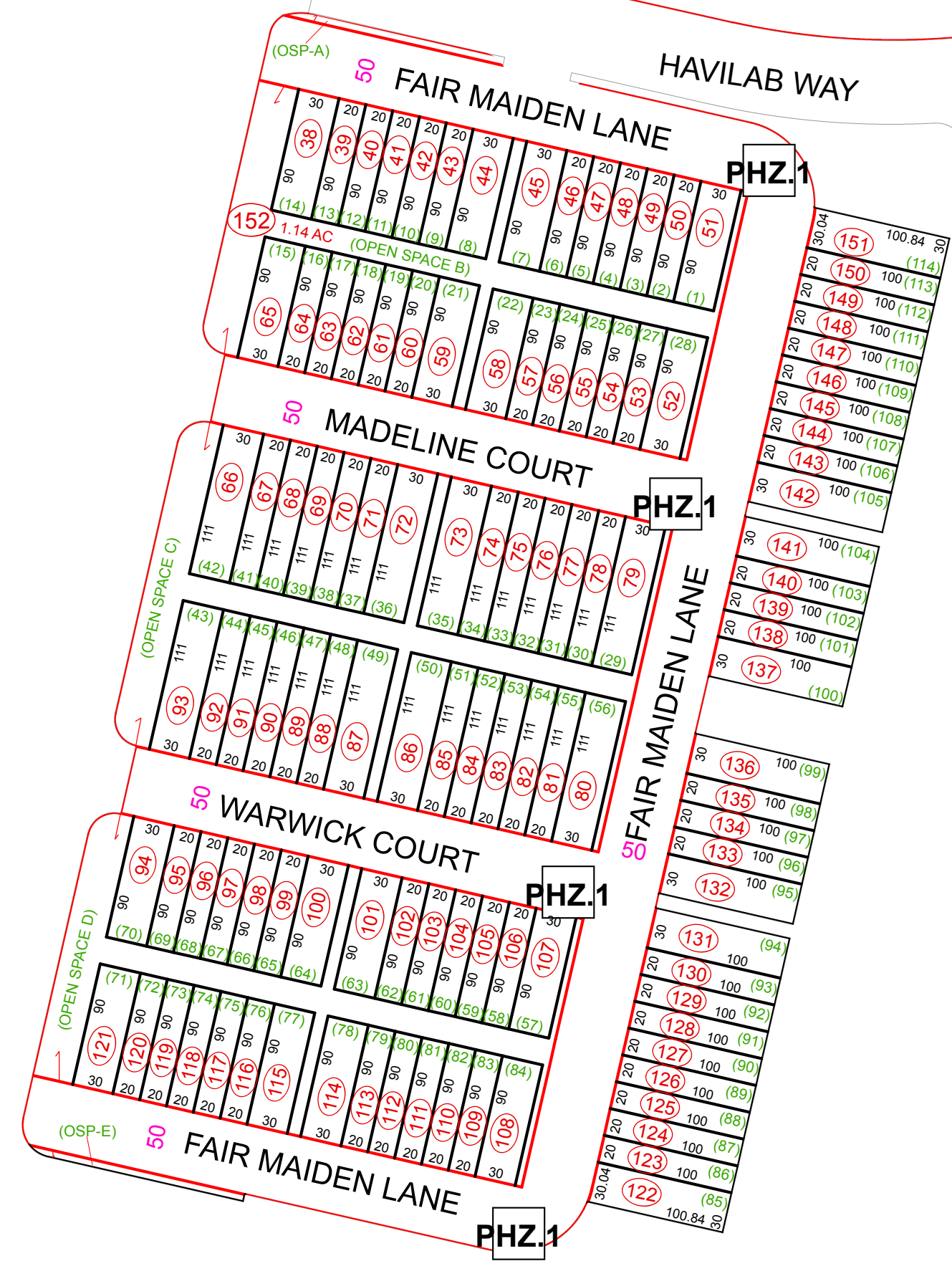


FALLING WATERS DIST

OPEQUON DIST

FW16



Run

(5)

OP02B

OP02

11/7

LEGEND

- (15) Lot Number
- (123) Parcel Number
- 72 Block Number
- 45/7 State Road Number
- Property Line
- Right-of-Way
- Original Property Line
- Easement
- District Line
- County Line
- Hydro
- Corporation Line

REVISION

1	Current to 3/4/2019
Print Date: 3/5/2019	

DISCLAIMER

This product was developed for taxation purposes and is therefore not suitable for legal, engineering or surveying purposes. Users of this information should review or consult the primary data and information sources to ascertain the appropriate usage of the information. Tax maps and digital parcel files (GIS files) are not to be included as activities within the practice of surveying in accordance with the "Inclusions and Exclusions of Surveying Practice" cited in W.Va. Code 30-13A-10.

RESTRICTION

All tax maps created under the provisions of reappraisal legislation are the property of the Berkeley County Assessor and the reproduction, copying, distribution or sale of such tax maps or any copies thereof without written permission of the Berkeley County Assessor is prohibited by law.

KEY MAP

H28	OP2	FW16
OP2	OP02B	OP2
H34	OP2	OP7

COUNTY OF BERKELEY

STATE OF WEST VIRGINIA

Office of Assessor

For Tax Purposes Only

OP02B

Date, Aerial Photography: _____
Photo No: _____

Map Tax Year: 2019
Scale: 1" = 100'

