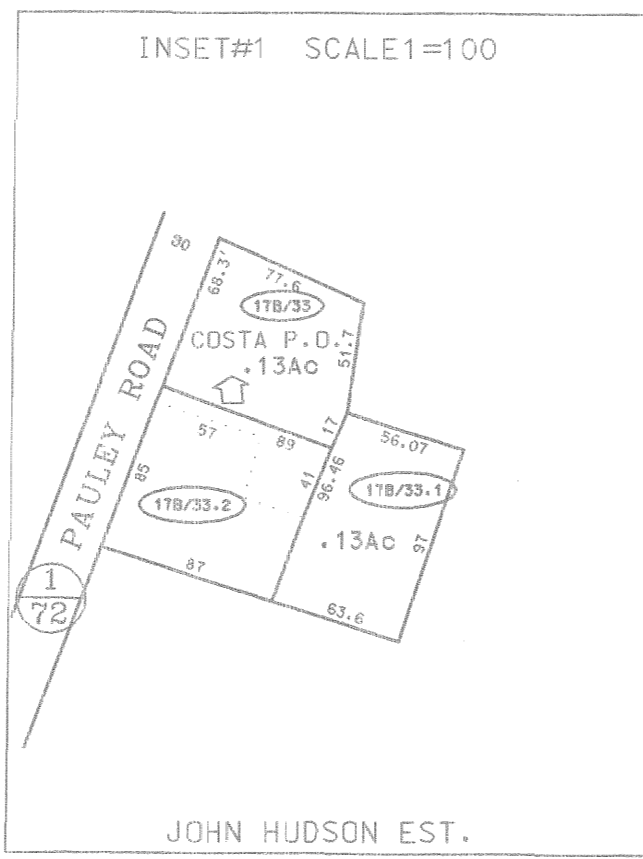
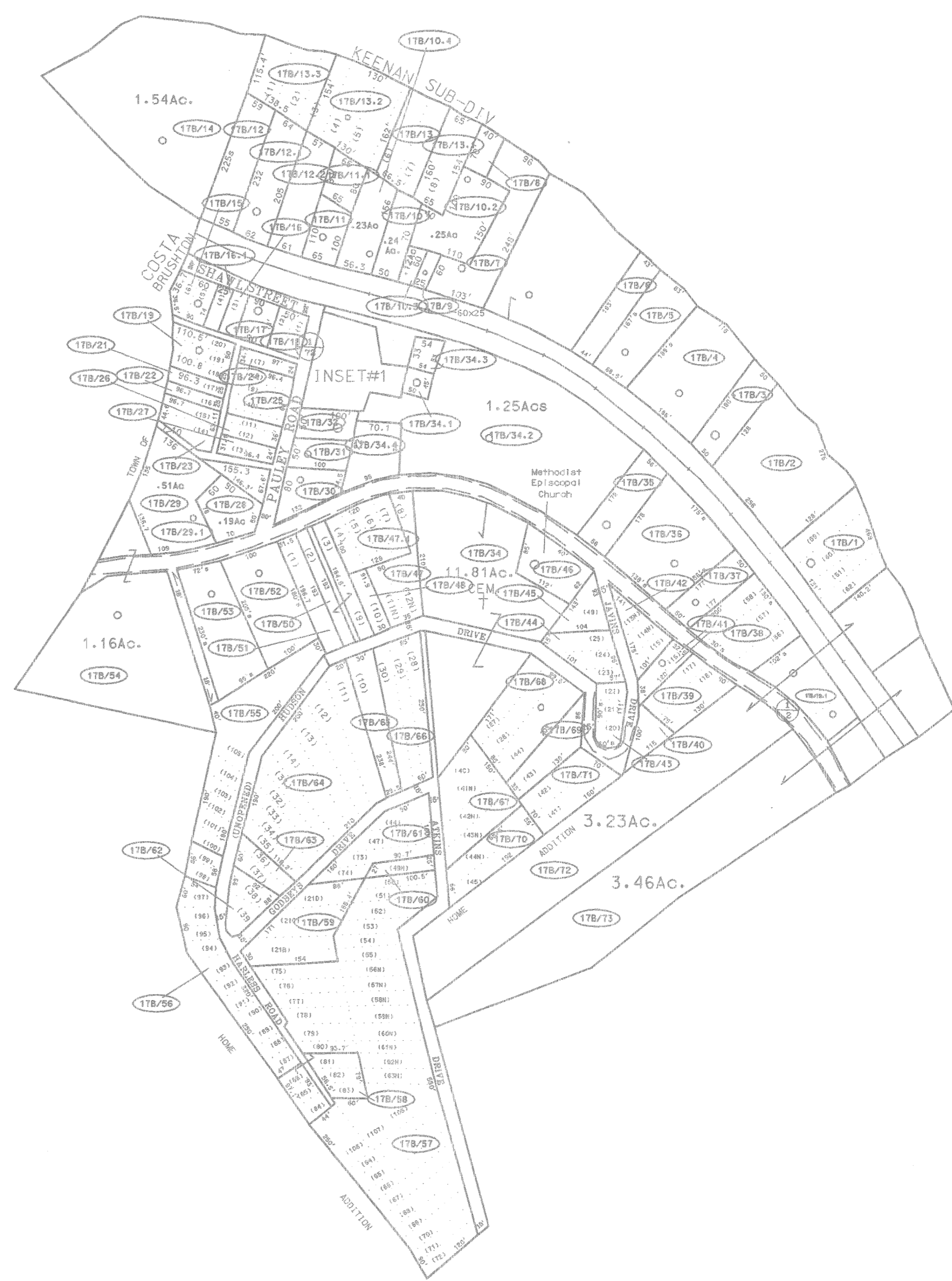


SEE 17



SEE 17



SEE 17

SEE 17



For Tax Purposes Only

Prepared by
 McKenzie Engineering Corporation
 402 Church Street
 Summersville, WV 26651

LEGEND

Property line	---	Original lot line	---
Edge of pavement or roadway	---	Deed lot number	(15)
Corporation line	---	Parcel or index number	99
District line	---	Improvement	o
County line	---	Railroad	—+—

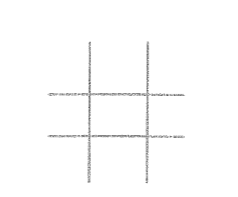
REVISIONS

1	
2	
3	
4	
5	
6	
7	
8	

RESTRICTION

All tax maps created under the provisions of reappraisal legislation are the property of the Assessor of Boone County, West Virginia and the reproduction, copying, modification, distribution or sale of such tax maps or any copies thereof without the written permission of the Boone County Assessor is prohibited by law.

KEY MAP



BOONE COUNTY
 STATE OF WEST VIRGINIA
 Office of Assessor

PEYTONA DISTRICT

MAP NO: 17B
 Date, Aerial Photography: 4-25-62 Date, Map: 4-2-63
 Photo No: 26-4158417 26-4158416
 Scale: 1" = 200'