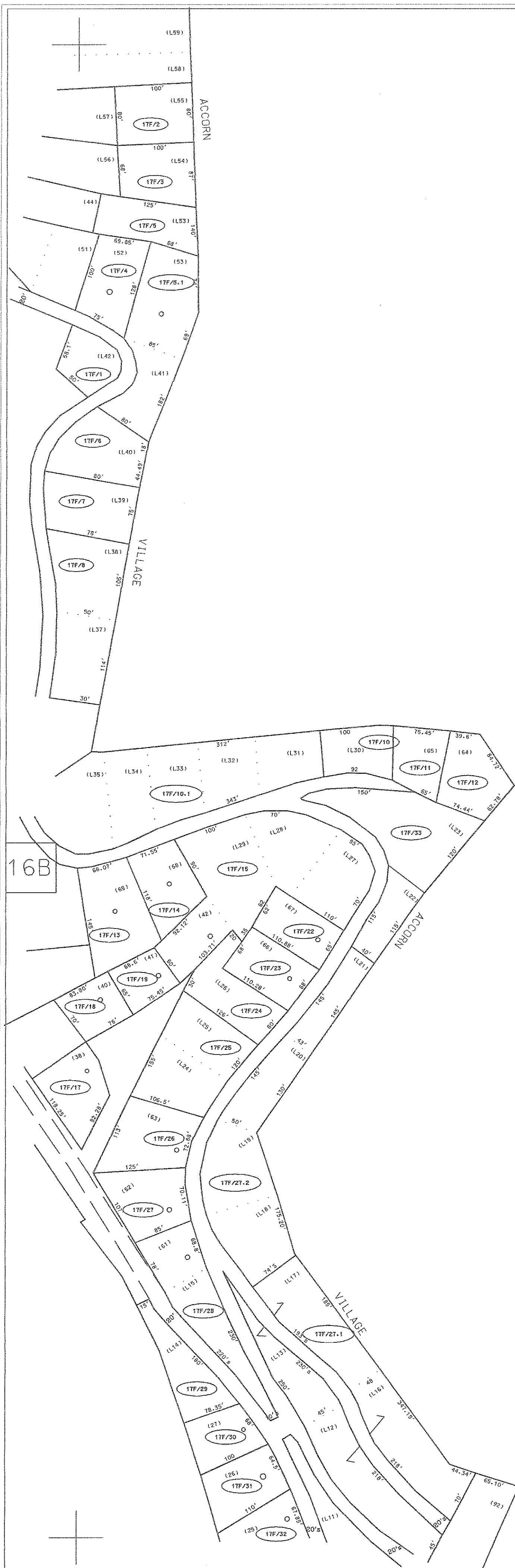


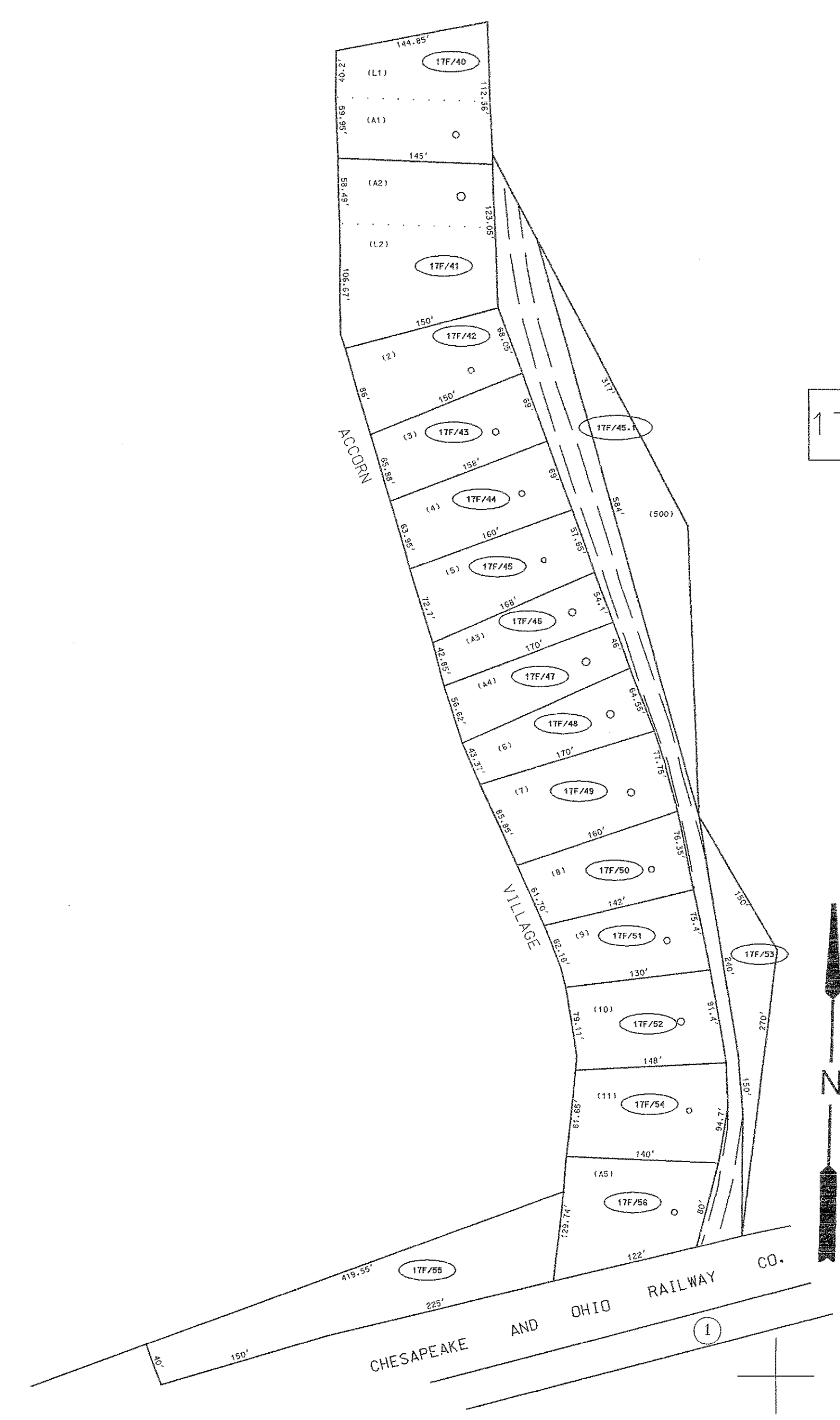
17E



16B

SEE 17

17G



17H

For Tax Purposes Only

Prepared by
 McKenzie Engineering Corporation
 402 Church Street
 Summersville, WV 26651

LEGEND

Property line	Original lot line	(15)
Edge of pavement or roadway	Deed lot number	(30)
Corporation line	Parcel or index number	(30)
District line	Improvement	(30)
County line	Railroad	(30)

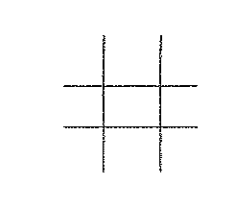
REVISIONS

1	
2	
3	
4	
5	
6	
7	
8	

RESTRICTION

All tax maps created under the provisions of reappraisal legislation are the property of the Assessor of Boone County, West Virginia and the reproduction, copying, modification, distribution or sale of such tax maps or any copies thereof without the written permission of the Boone County Assessor is prohibited by law

KEY MAP



BOONE COUNTY
 STATE OF WEST VIRGINIA
 Office of Assessor

PEYTONA DISTRICT

MAP NO: 17F
 Date, Aerial Photography: 11-23-62 Date, Map: 3-14-63
 Photo No: 60-1325-1326, 59-1335-1336
 59-1336-1337, 56-1334-1335 Scale: 1" = 100'

11-23-62 Aerial Photography: 11-23-62 Date, Map: 3-14-63
 Photo No: 60-1325-1326, 59-1335-1336
 59-1336-1337, 56-1334-1335 Scale: 1" = 100'