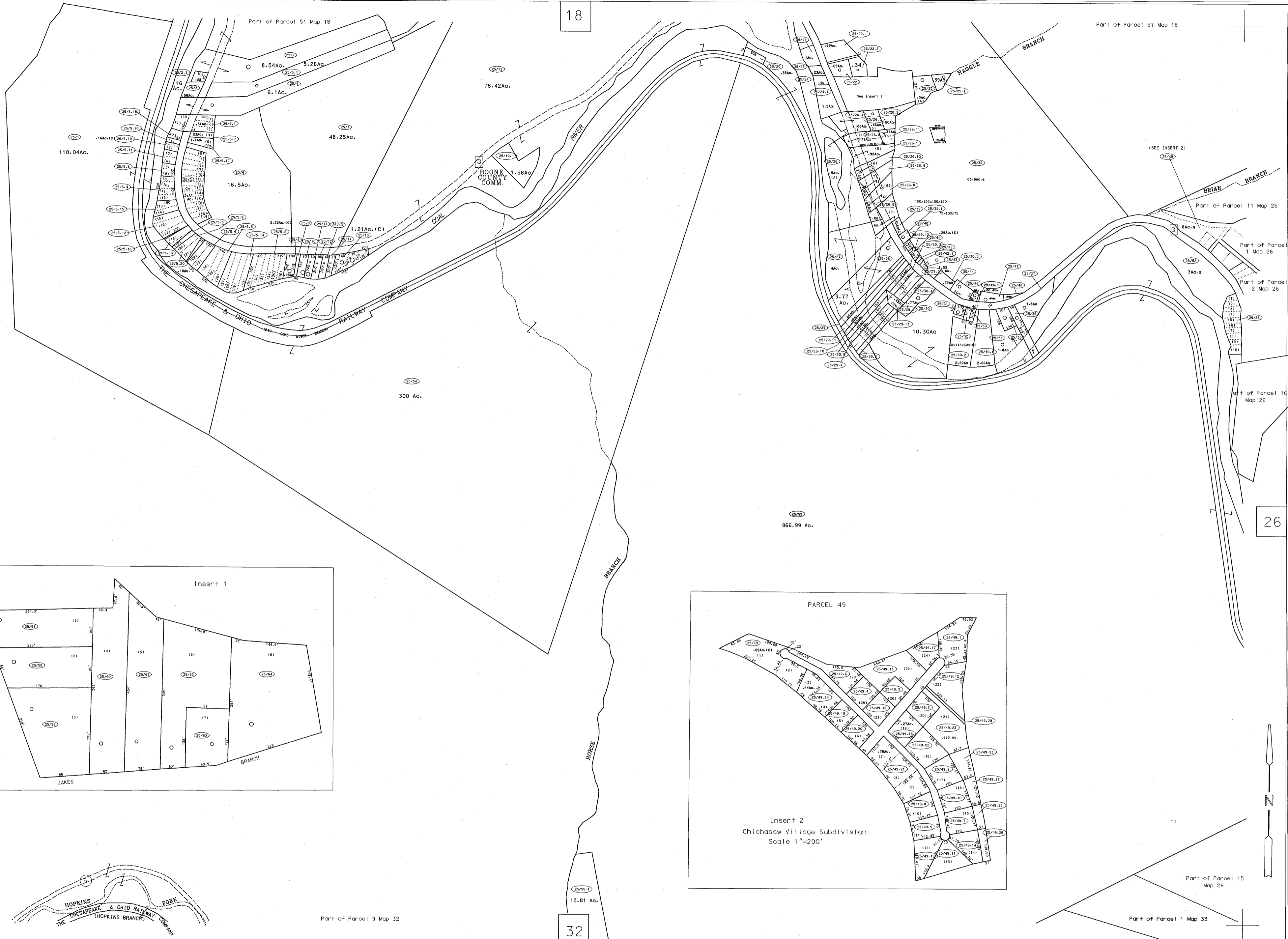


LOC ?
 25/25 6.11Ac.
 25/46 8.11Ac.
 25/67 2.52Ac.

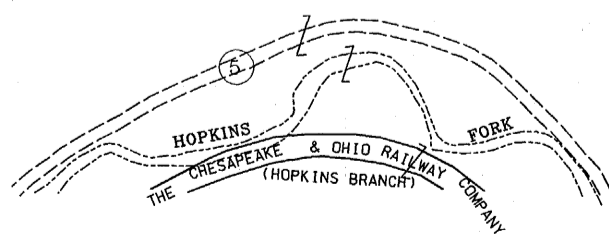
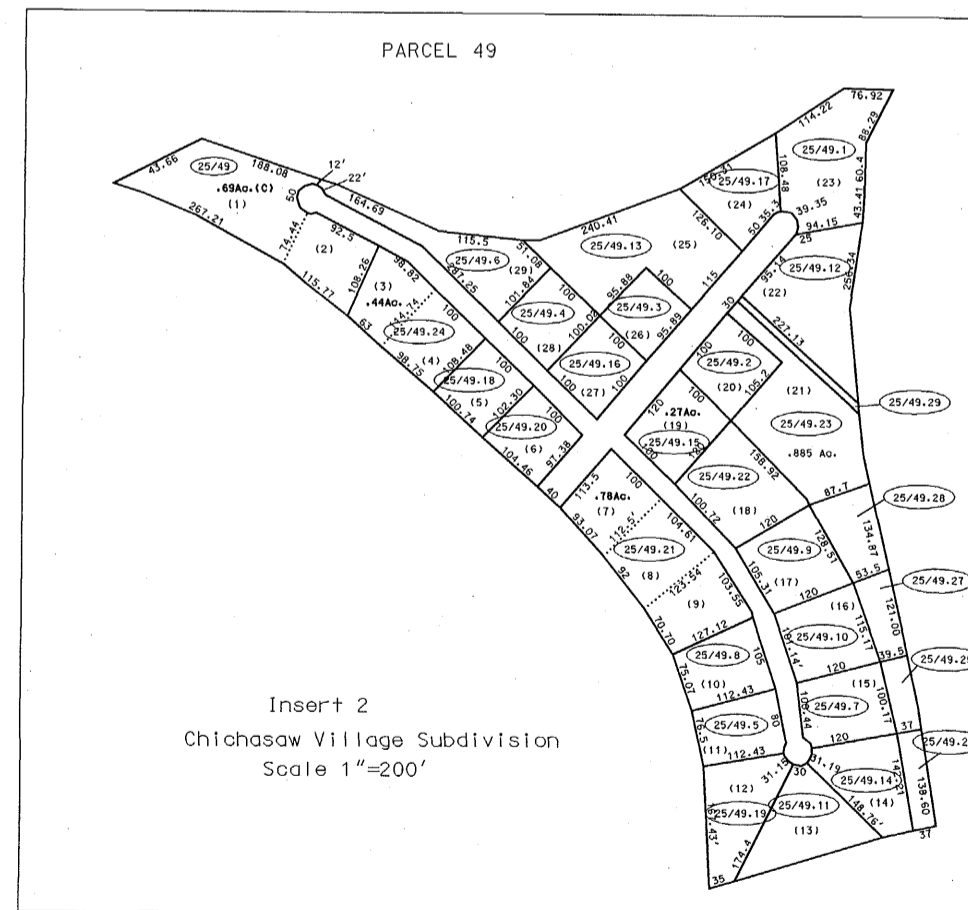
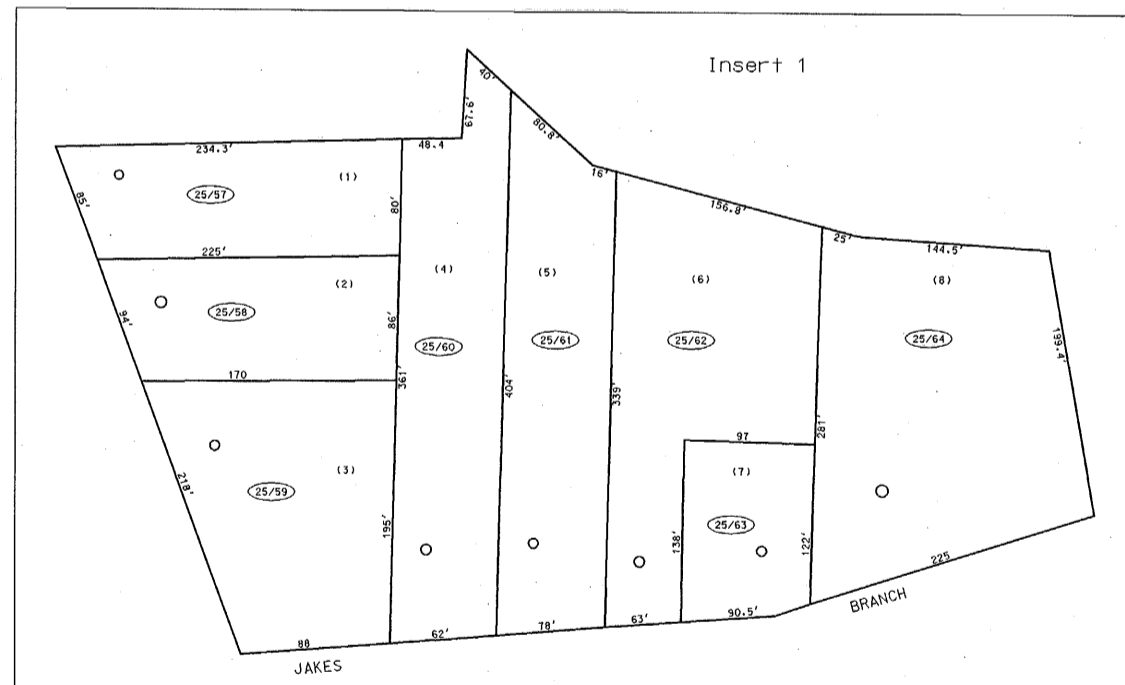


24

26

18

32



For Tax Purposes Only
 Prepared by
 McKenzie Engineering Corporation
 402 Church Street
 Summersville, WV 26651

| LEGEND | |
|-----------------------------|-----------------------------|
| Property line | Original lot line |
| Edge of pavement or roadway | Deed lot number (15) |
| Corporation line | Parcel or index number (99) |
| District line | Improvement |
| County line | Railroad |

| REVISIONS | |
|-----------|--|
| 1 | |
| 2 | |
| 3 | |
| 4 | |
| 5 | |
| 6 | |
| 7 | |
| 8 | |

RESTRICTION

All tax maps created under the provisions of reappraisal legislation are the property of the Assessor of Boone County, West Virginia and the reproduction, copying, modification, distribution or sale of such tax maps or any copies thereof without the written permission of the Boone County Assessor is prohibited by law

KEY MAP

BOONE COUNTY
 STATE OF WEST VIRGINIA
 Office of Assessor

SHERMAN DISTRICT
 MAP NO: 25
 Date, Aerial Photography: 4-24-62 Date, Map: 4-24-64
 Photo No: 28-350&351, 29-308&309 Scale: 1"= 400'
 28-349&350, 29-309&310