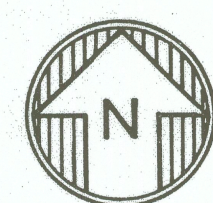
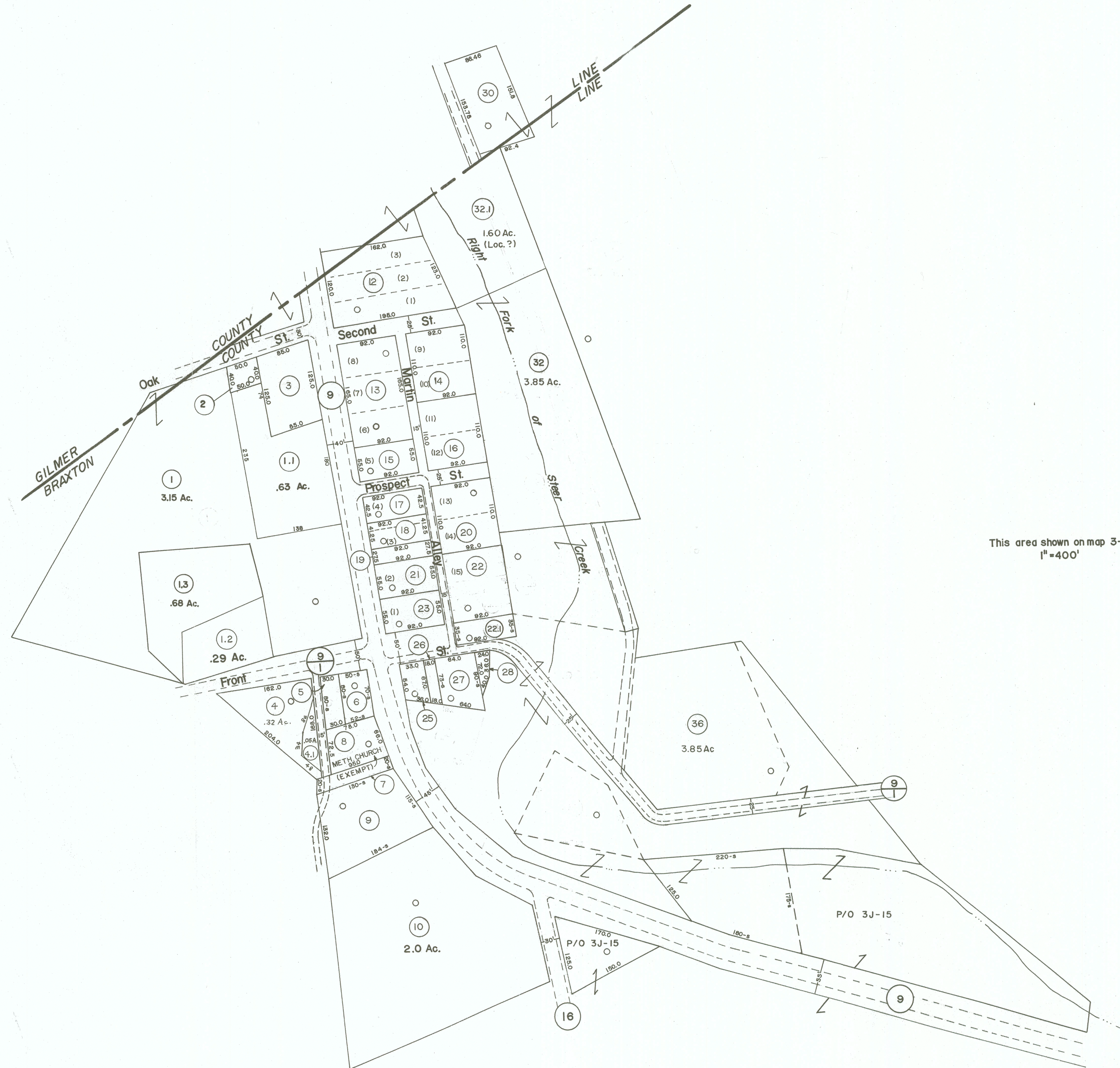


This area shown on map 3-J
1"=400'

This area shown on map 3-J
1"=400'



For Tax Purposes Only

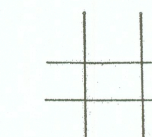
Prepared by
VOGT, IVERS AND ASSOCIATES
ENGINEERS-ARCHITECTS
CHARLESTON, W.VA.
CINCINNATI, OHIO

Property line ————
Edge of pavement or roadway - - - -
Corporation line - - - -
District line - - - -
County line - - - -

Original lot line - - - -
Deed lot number (15)
Parcel or index number (15)
Improvement (15)
Railroad (15)

Revisions			
1	3-10-76	T.E.	9
2	7-80	CBG	10
3	7-1-83	CBG	11
4	7/1/84	RLB	12
5	REVISED TO 7-1-87	NCS	13
6	REV. TO 1-1-88	NCS	14
7	4-15-98	J.E.B.	15
8	5-1-99	J.E.B.	16
9	ESI	6/12/02	REK
10	4/9/06	S&H	18
11	3-19-10	++S	19
12	6/9/12	S&H	20
13	2-20-14	++S	21
14			22
15			23
16			24

KEY MAP



BRAXTON COUNTY

STATE OF WEST VIRGINIA

Office of Assessor

DISTRICT

TOWN OF ROSEDALE

SHEET NO: **BD-1**

Date, Aerial Photography: 4-20-60
Photo No: BR-22-9

Date, Map: 1-10-63
Scale: 1"=100'