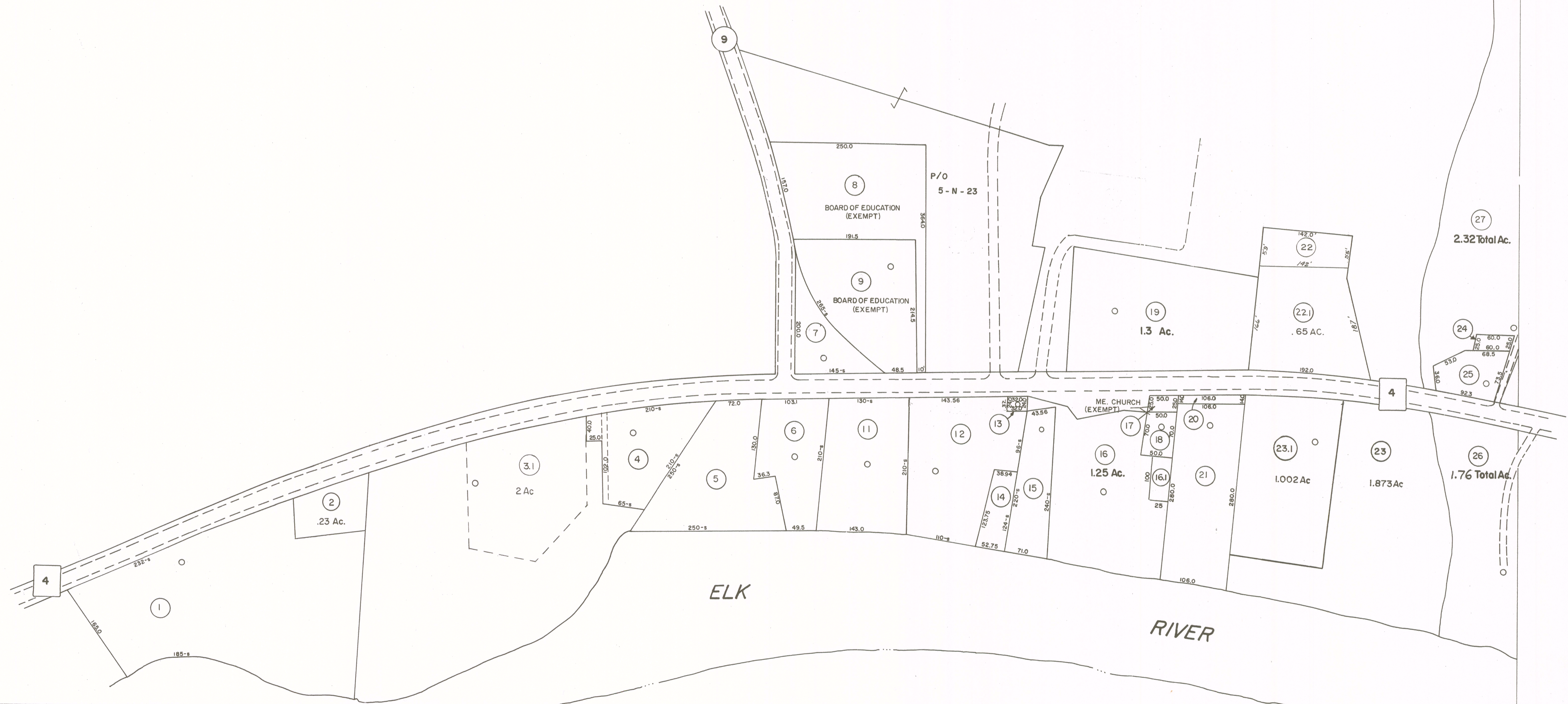


This area shown on map 5-N  
1"=400'

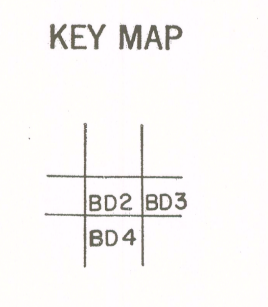


BD-2 BD-3  
BD-4

For Tax Purposes Only  
Prepared by  
**VOGT, IVERS AND ASSOCIATES**  
ENGINEERS-ARCHITECTS  
CHARLESTON, W.VA.  
CINCINNATI, OHIO

Property line	—	Original lot line	- - - - - (15)
Edge of pavement or roadway	—	Deed lot number	⊕
Corporation line	—	Parcel or index number	⊙
District line	—	Improvement	○
County line	—	Railroad	—+—+—+—

Revisions			
1	3/3/76	SAB	9 3-19-10 H45 17
2	6/16/80	OF	10 4-8-11 H45 18
3	7-1-83	CBG	11 4/4/13 SBH 19
4	7/1/84	RLB	12 2-20-16 H45 20
5	Revised to 7-1-87	SLP	13
6	O.G.I.S 1-1-95	J.E.B	14
7	ESI 6/12/02	REK	15
8	5/1/03	S B H	16



**BRAXTON COUNTY**  
STATE OF WEST VIRGINIA  
Office of Assessor

DISTRICT **BIRCH DISTRICT**  
**FRAMETOWN**  
SHEET NO: **BD-2**  
Date, Aerial Photography: 4-20-60 Date, Map: 3-26-63  
Photo No: BR-14-190 Scale: 1" = 100'