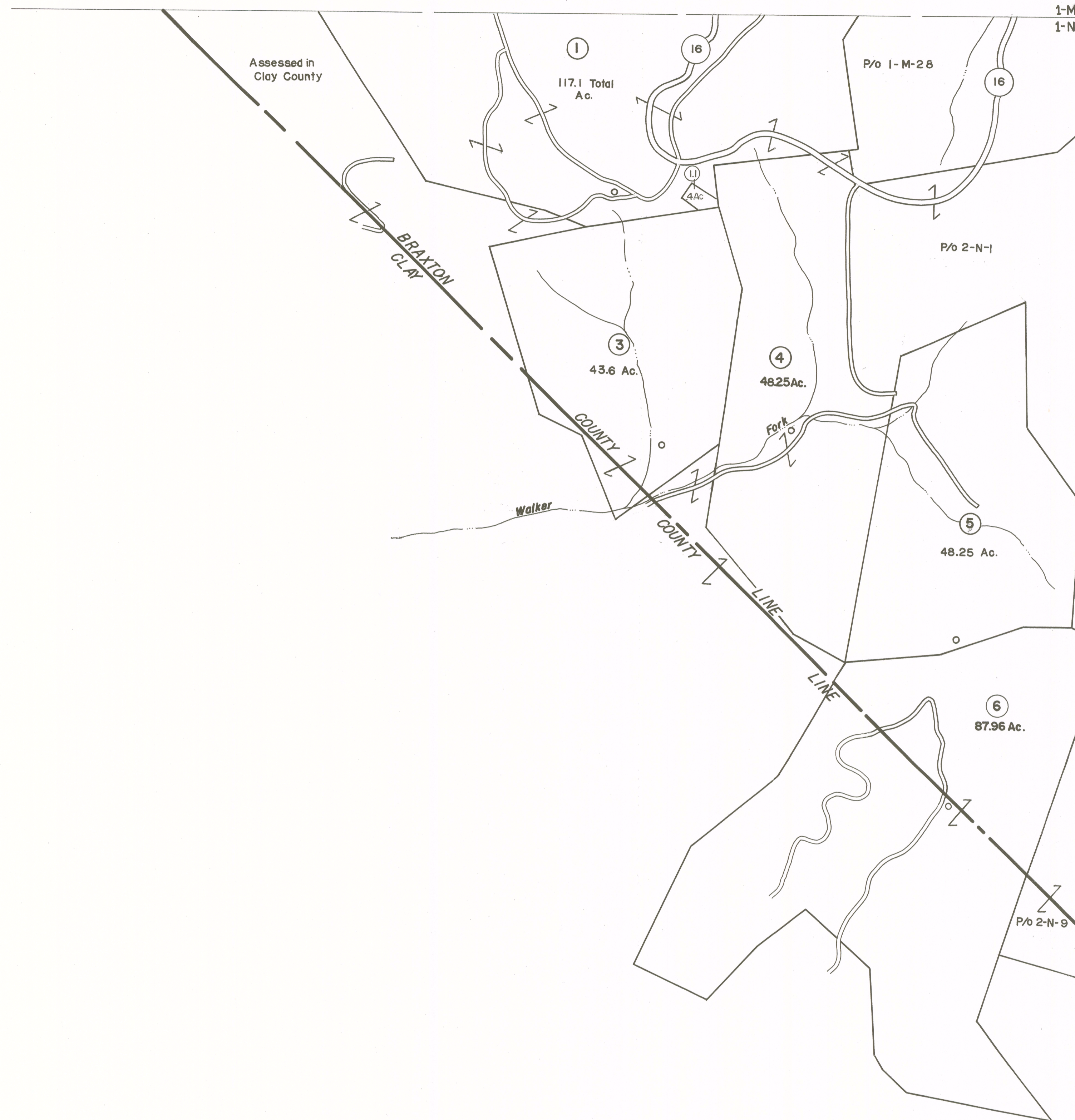


1-M 2-M
1-N 2-N



Assessed in Clay County

BRAXTON COUNTY LINE

Walker Fork

Walker

BRAXTON COUNTY LINE

P/O 2-N-9

1-N 2-N
2-P

For Tax Purposes Only

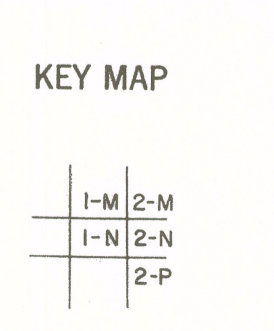
Prepared by
VOGT, IVERS AND ASSOCIATES
 ENGINEERS-ARCHITECTS
 CHARLESTON, W.VA.
 CINCINNATI, OHIO

Property line	—————
Edge of pavement or roadway	———
Corporation line	-----
District line	-----
County line	-----

Original lot line	-----
Dead lot number	(15)
Parcel or index number	(99)
Improvement	o
Railroad	—+—+—+—

1	Sept 20 7-80	DLF	9
2	" " 7-1-83		10
3	7/1/84	RLB	11
4	ESI 6/12/02	REK	12
5			13
6			14
7			15
8			16

Revisions	
17	
18	
19	
20	
21	
22	
23	
24	



BRAXTON COUNTY

STATE OF WEST VIRGINIA

Office of Assessor

DISTRICT
BIRCH DISTRICT

SHEET NO: **1-N**

Date, Aerial Photography: 4-22-60
 Photo No: BR-22-33
 Date, Map: 9-26-62
 Scale: 1" = 400'