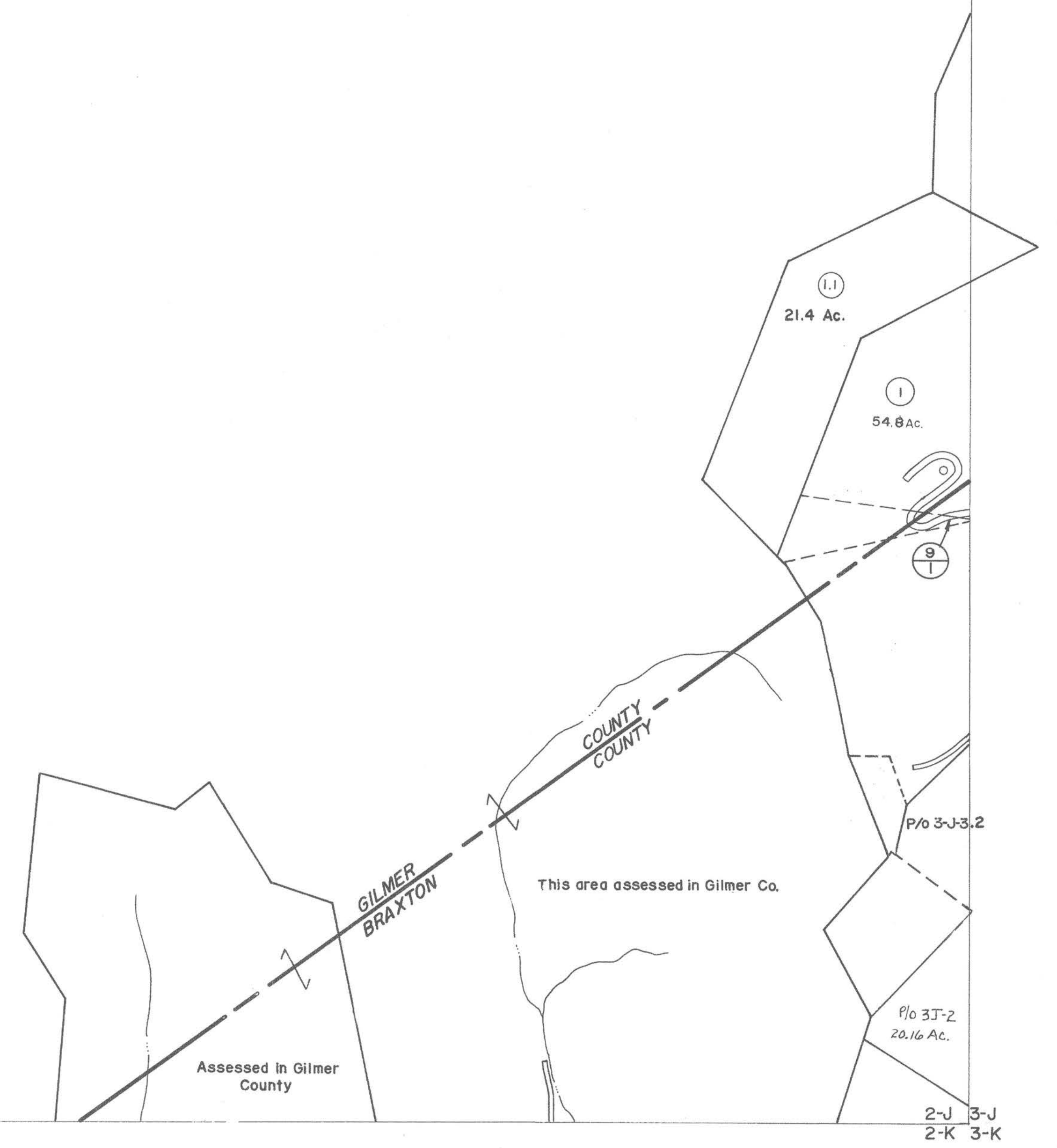


3-H  
2-J 3-J



2-J  
2-K

2-J 3-J  
2-K 3-K



For Tax Purposes Only  
Prepared by  
**VOGT, IVERS AND ASSOCIATES**  
ENGINEERS-ARCHITECTS  
CHARLESTON, W.VA.  
CINCINNATI, OHIO

Property line	—————	Original lot line	-----
Edge of pavement or roadway	-----	Deed lot number	(15)
Corporation line	-----	Parcel or index number	⊙
District line	-----	Improvement	○
County line	-----	Railroad	+

Revisions			
1	3/3/76 BARR	9	
2	Revised to 7-80 D.F.	10	
3	7-1-83 O.B.G.	11	
4	7/1/84 RLB	12	
5	Revised to 7-1-85 D.F.	13	
6	Revised to 7-1-87 D.F.	14	
7	OGIS 2/5/91 DSH	15	
8	2/15/17 SLS	16	
		17	
		18	
		19	
		20	
		21	
		22	
		23	
		24	

KEY MAP

3-H
2-J 3-J
2-K 3-K

**BRAXTON COUNTY**  
STATE OF WEST VIRGINIA  
Office of Assessor

DISTRICT  
**BIRCH DISTRICT**  
SHEET NO: **2-J**  
Date, Aerial Photography: 4-22-60  
Photo No: BR-22-27  
Date, Map: 10-1-62  
Scale: 1"=400'