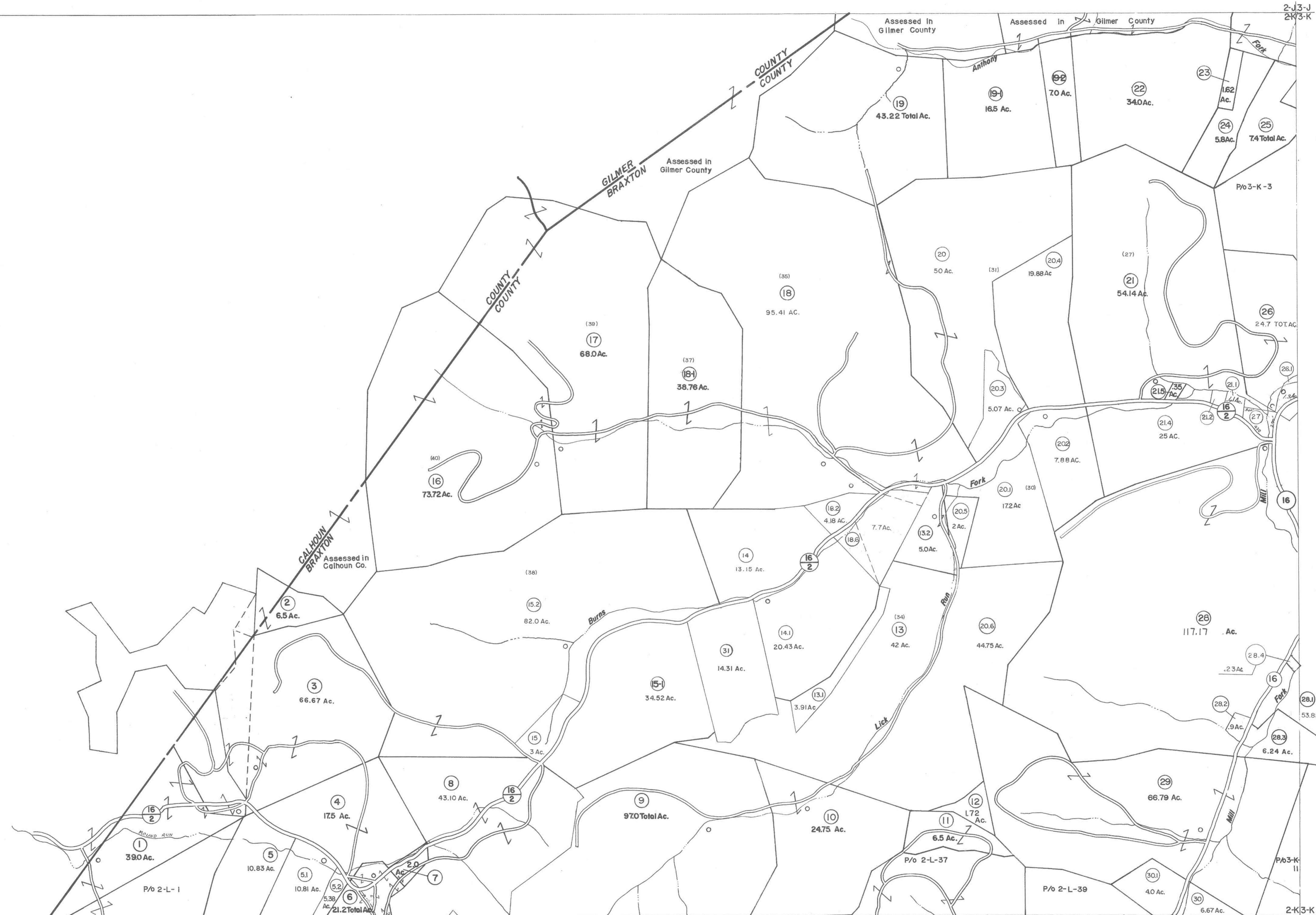


2-J  
2-K

2-J-3-J  
2-K-3-K



2-K  
2-L

2-K-3-K  
2-L-3-L

For Tax Purposes Only

Prepared by  
**VOGT, IVERS AND ASSOCIATES**  
 ENGINEERS-ARCHITECTS  
 CHARLESTON, W.VA.  
 CINCINNATI, OHIO

Property line	—	Original lot line	— (15)
Edge of pavement or roadway	—	Deed lot number	— (16)
Corporation line	—	Parcel or index number	— (17)
District line	—	Improvement	— (18)
County line	—	Railroad	— (19)

Revisions	
1	PARCELS 15-1, 18-1, 18-2, 19-1, 19-2
2	20-1 ADDED 6-27-63
3	7/31/76 BAA
4	8/21/76 7-80
5	7-1-88 RLB
6	7/1/84 RLB
7	Revised to 7-1-87
8	
9	REV. TO 1-1-88 NCS
10	5-1-97 J.E.B
11	4-15-98 J.E.B
12	5-1-99 J.E.B
13	ESI 5/30/01 REK
14	ESI 6/12/02 REK
15	5/7/05 S&H
16	4/19/08 S&H
17	4/14/09 S&H
18	3-19-10 H&S
19	4-8-11 H&S
20	4/4/13 S&H
21	3/16/14 S&H
22	2/21/15 S&H
23	2/15/17 SLS
24	

KEY MAP

2-J 3-J  
2-K 3-K  
2-L 3-L

**BRAXTON COUNTY**

STATE OF WEST VIRGINIA

Office of Assessor

DISTRICT  
**BIRCH DISTRICT**

SHEET NO: **2-K**

Date, Aerial Photography: 4-22-60  
Photo No: BR-22-25

Date, Map: 9-27-62  
Scale: 1" = 400'