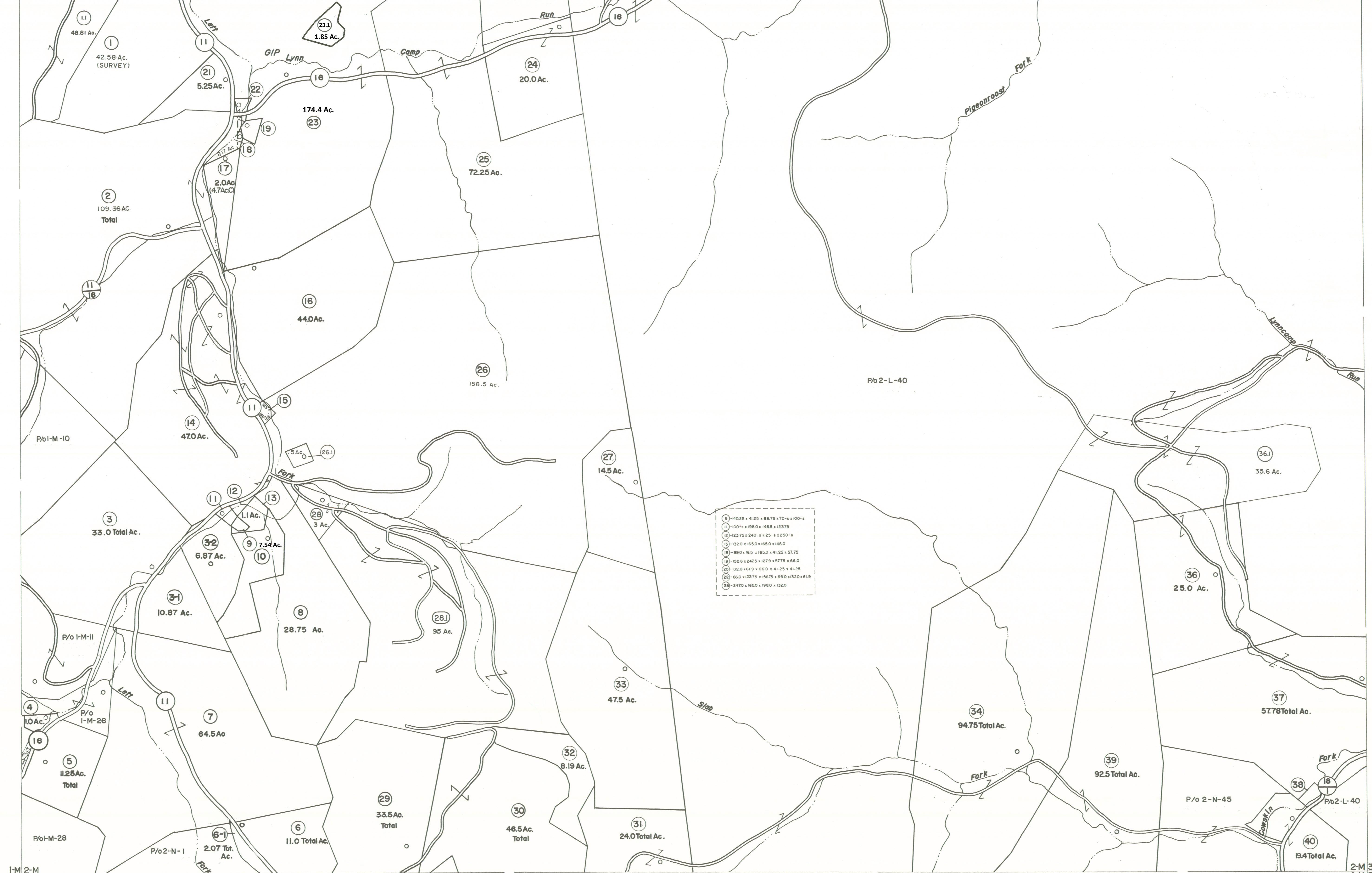


1-L 2-L
1-M 2-M

2-L 3-L
2-M 3-M



1-M 2-M
1-N 2-N

2-M 3-M
2-N 3-N

For Tax Purposes Only

Prepared by
VOGT, IVERS AND ASSOCIATES
 ENGINEERS-ARCHITECTS
 CHARLESTON, W.VA.
 CINCINNATI, OHIO

Property line	—————	Original lot line	----- (15)
Edge of pavement or roadway	-----	Deed lot number	----- (99)
Corporation line	-----	Parcel or index number	-----
District line	-----	Improvement	-----
County line	-----	Railroad	-----

Revisions			
1	PARCELS 3-1, 3-2, 6-1, 36-1,	9	O.G.I.S 1-1-95 J.E.B 17
2	ADDED 6-27-63	10	5-1-97 J.E.B 18
3	3/5/26 BARR	11	5/7/05 S.B.H 19
4	See to 7-80	12	4/19/08 S.B.H 20
5	7-1-83 C.B.H	13	3/12/19 B.M.K 21
6	7/1/84 RLB	14	
7	Revised to 7-1-87	15	
8	EXCALIBUR GRAPHICS 5/93	16	

KEY MAP

1-L 2-L 3-L
1-M 2-M 3-M
1-N 2-N 3-N

BRAXTON COUNTY

STATE OF WEST VIRGINIA

Office of Assessor

DISTRICT
BIRCH DISTRICT

SHEET NO: 2-M

Date, Aerial Photography: 4-22-60
 Photo No: BR-22-23

Date, Map: 9-21-62
 Scale: 1" = 400'