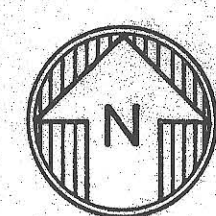
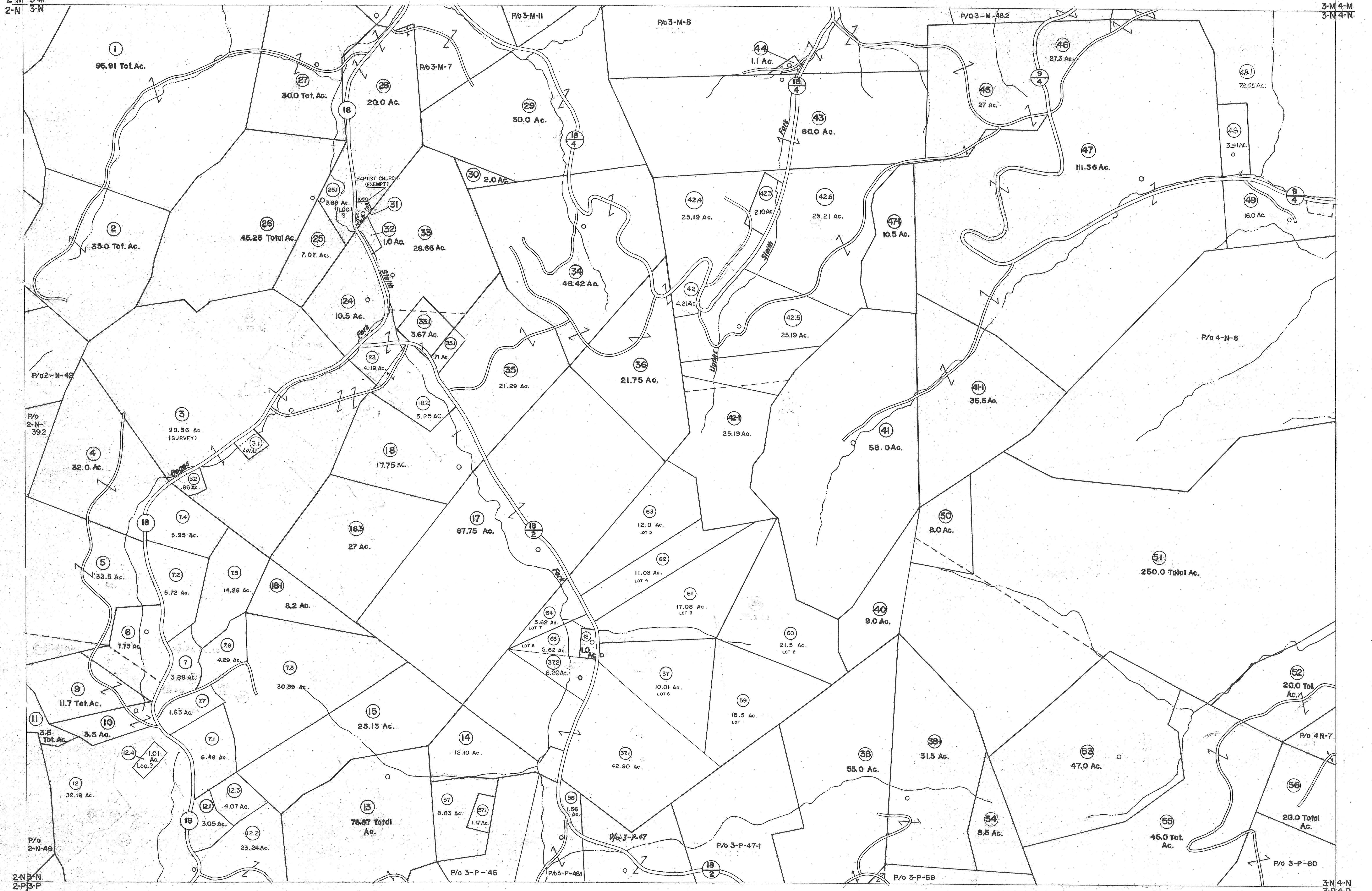


2-M 3-M
2-N 3-N

3-M 4-M
3-N 4-N



For Tax Purposes Only

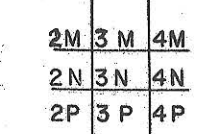
Prepared by
VOGT, IVERS AND ASSOCIATES
 ENGINEERS-ARCHITECTS
 CHARLESTON, W.VA.
 CINCINNATI, OHIO

Property line	—————
Edge of pavement or roadway	—————
Corporation line	—————
District line	—————
County line	—————

Original lot line	—————
Deed lot number	(15)
Parcel or index number	(20)
Improvement	o
Railroad	—————

Revisions		9	10	11	12	13	14	15	16
1	PARCELS 5-1, 18-1, 28-1, 41-1, 42-2,	REV. TO 1-1-88	NCS	17	ESI	6/13/02	REK		
2	47-1 ADDED 6-26-83	0.G.I.S	1-1-95	J.E.B	18	5/1/03	S.B.H		
3	3/5/76	OGIS	4/20/95	SAJ	19	5/2/05	S.B.H		
4	NEW TO 7-80	0.G.I.S	6-1-96	J.E.B	20	4/19/08	S.B.H		
5	" " 7-1-83	5-1-97	J.E.B	21	4/14/09		S.B.H		
6	7/1/84	4-15-98	J.E.B	22	3-19-10		H.H.S		
7	Revised to 7-1-87	5-1-99	J.E.B	23	4-8-11		H.H.S		
8				24	2/17/15		S.B.H		

KEY MAP



BRAXTON COUNTY
 STATE OF WEST VIRGINIA
 Office of Assessor

DISTRICT
BIRCH DISTRICT

SHEET NO: **3-N**

Date, Aerial Photography: 4-22-60
 Photo No: BR-22-14
 Date, Map: 9-25-62
 Scale: 1" = 400'