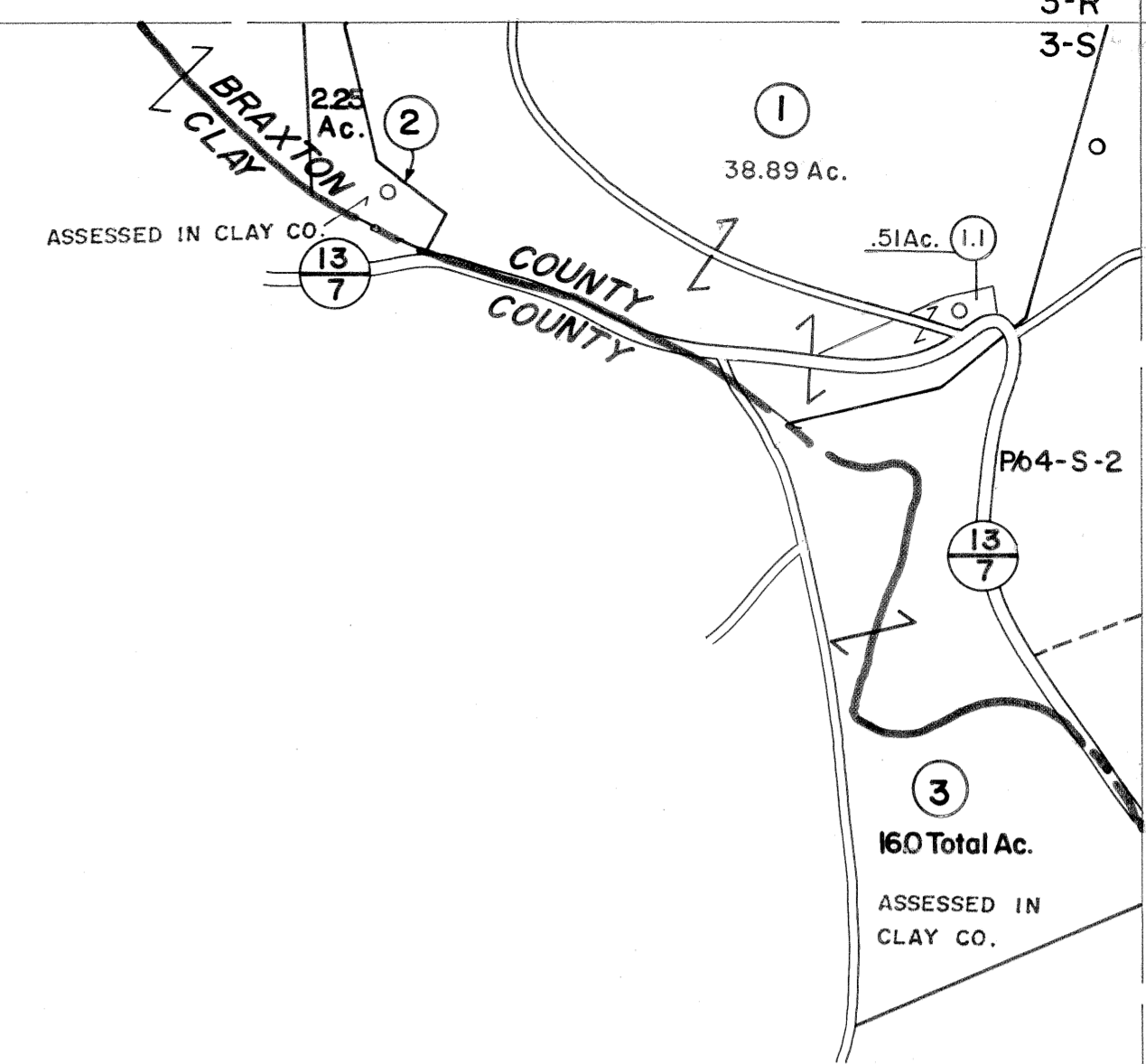
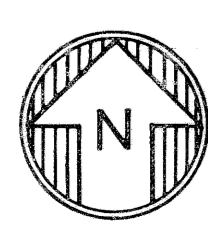


3-R
3-S

3-R 4-R
3-S 4-S



3-S 4-S
4-T

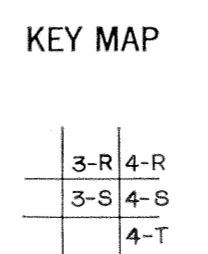


For Tax Purposes Only

Prepared by
VOGT, IVERS AND ASSOCIATES
 ENGINEERS-ARCHITECTS
 CHARLESTON, W.VA.
 CINCINNATI, OHIO

Property line	—————	Original lot line	-----
Edge of pavement or roadway	-----	Deed lot number	(15)
Corporation line	-----	Parcel or index number	(15)
District line	-----	Improvement	o
County line	-----	Railroad	+

Revisions		
1	Rev. to 7-80	9
2	9 " 7-83	10
3	7/1/84 RLB	11
4	O.G.I.S. 1-1-95 J.E.B	12
5	ESI 5/30/01 REK	13
6	4/9/06 SBH	14
7	4/19/08 SBH	15
8		16
		17
		18
		19
		20
		21
		22
		23
		24



BRAXTON COUNTY
 STATE OF WEST VIRGINIA
 Office of Assessor

DISTRICT
BIRCH DISTRICT
 SHEET NO: **3-S**
 Date, Aerial Photography: 4-22-60 Date, Map: 10-1-62
 Photo No: BR-22-18 Scale: 1"=400'