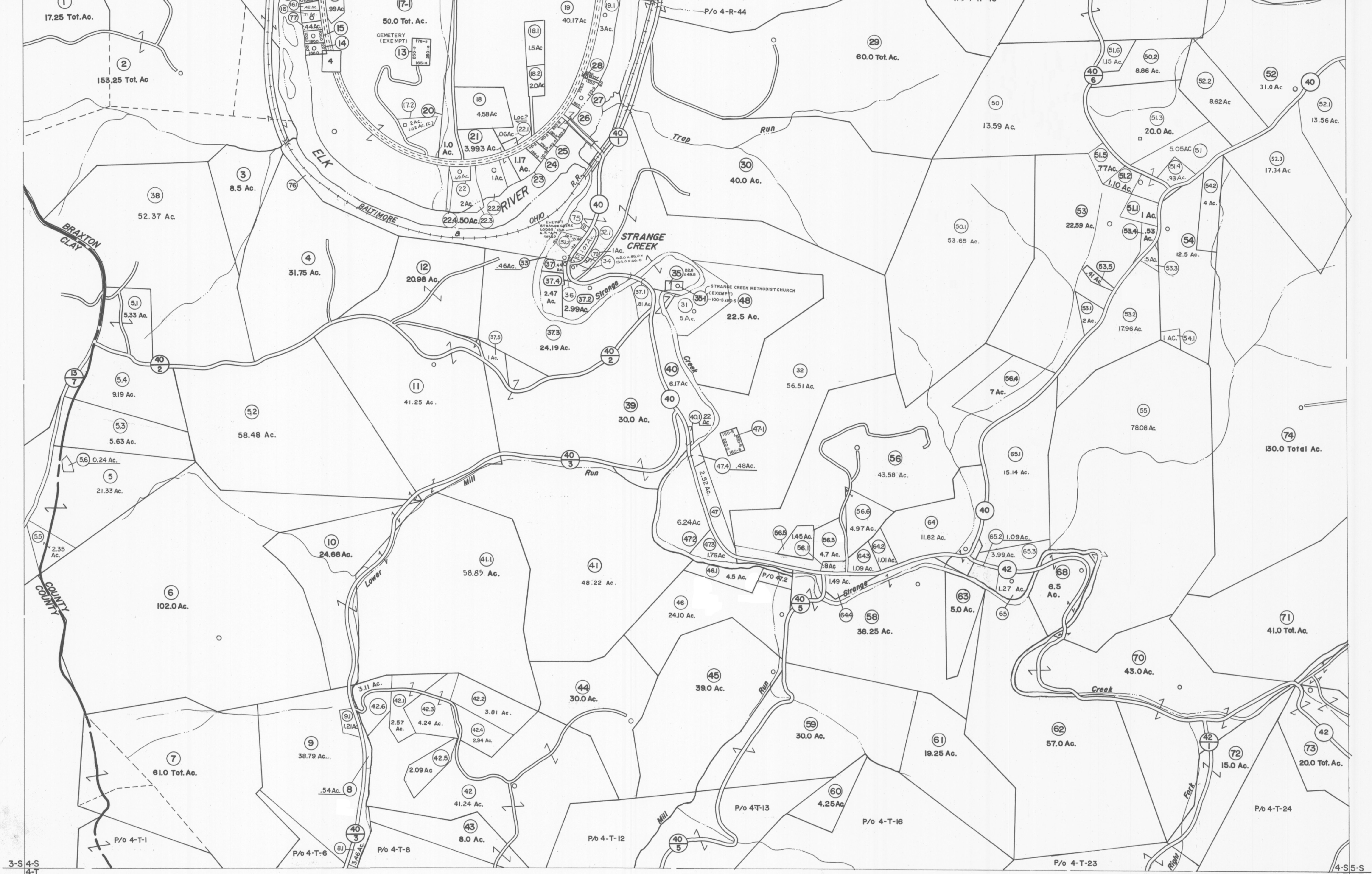


3-R4-R  
3-S4-S

4-R5-R  
4-S5-S



For Tax Purposes Only

Prepared by  
VOGT, IVERS AND ASSOCIATES  
ENGINEERS-ARCHITECTS  
CHARLESTON, W.VA.  
CINCINNATI, OHIO

Property line	---
Edge of pavement or roadway	---
Corporation line	---
District line	---
County line	---

Original lot line	---
Deed lot number	(15)
Parcel or index number	(99)
Improvement	---
Railroad	---

Revisions	
1	PARCEL 17-1 ADDED 6-24-63
2	PARCEL 49 - DELETED
3	PARCEL 47-2 ADDED 10-3-63
4	P/W
5	REV. TO 7-80
6	" " 7-1-83
7	7/1/84 RL B
8	REVISED TO 7-1-85
9	REVISED TO 7-1-87
10	REV. TO 1-1-88 NCS
11	OGIS 2/9/91 DSH
12	EXCALIBUR GRAPHICS 5/93
13	O.G.I.S. 1-1-95 J.E.B
14	OGIS 5/8/95 SAJ
15	5-1-97 J.E.B
16	4-15-98 J.E.B
17	5-1-99 J.E.B
18	ESI 4-27-00 REK
19	ESI 5/30/01 REK
20	ESI 6/13/02 REK
21	5/3/2003 SBH
22	5/2/04 SBH
23	5/2/05 SBH
24	4/9/06 SBH

3-19-10	KEY MAP
4-8-11	SBH
6/9/12	SBH
4/9/13	SBH
3/16/14	SBH
3/4/15	SBH
4/1/15	SBH
2/21/15	SBH
1/29/18	NLS

**BRAXTON COUNTY**  
STATE OF WEST VIRGINIA  
Office of Assessor

DISTRICT  
BIRCH DISTRICT

SHEET NO: 4-S

Date, Aerial Photography: 4-22-60  
Photo No: BR-14-200  
Date, Map: 9-25-62  
Scale: 1" = 400'