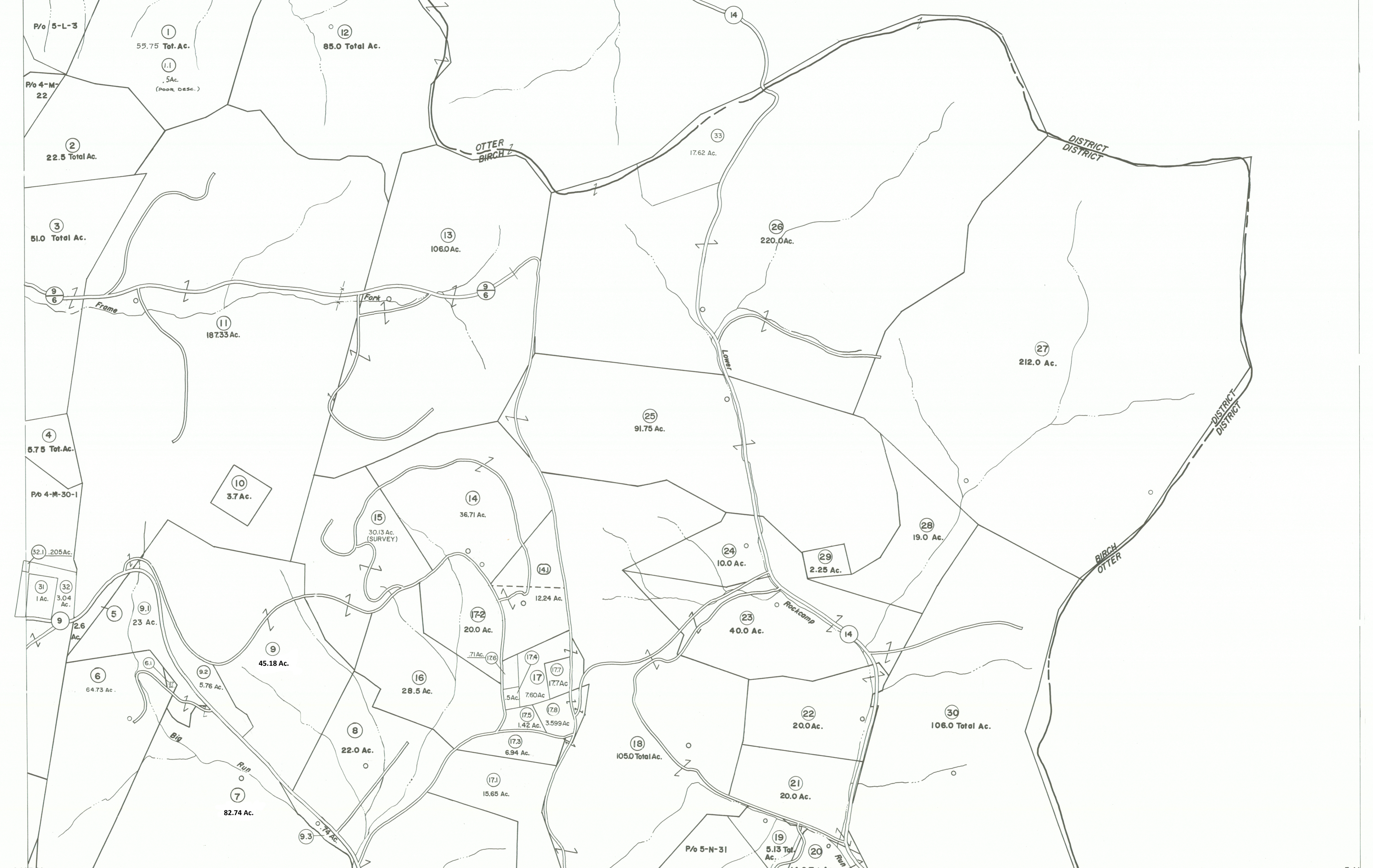


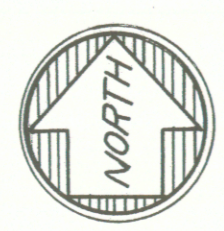
4-L-5-L  
4-M-5-M

5-L  
5-M



4-M-5-M  
4-N-5-N

5-M  
5-N



For Tax Purposes Only

Prepared by  
**VOGT, IVERS AND ASSOCIATES**  
 ENGINEERS-ARCHITECTS  
 CHARLESTON, W.VA.  
 CINCINNATI, OHIO

Property line ————  
 Edge of pavement or roadway ————  
 Corporation line - - - - -  
 District line - - - - -  
 County line - - - - -

Original lot line - - - - -  
 Deed lot number (15)  
 Parcel or index number (16)  
 Improvement (17)  
 Railroad (18)

Revisions			
1	PARCEL 17-1 ADDED 6-24-63	9	OGIS 2/9/91 DSH
2	PARCEL 17-2 ADDED 6-24-63	10	EXCALIBUR GRAPHICS 5/93
3	REV. TO 7-80	11	O.G.I.S. 1-1-95 J.E.B
4	" " 7-1-83	12	" " 9-1-97 J.E.B
5	7/1/84	13	4-15-98 J.E.B
6	Revised to 7-1-85	14	ES1 4-27-00 REK
7	Revised to 7-1-86	15	ES1 5/30/01 REK
8	Revised to 7-1-87	16	4/30/03 S B H
		17	5/2/05 S B H
		18	4/19/08 S B H
		19	3-19-10 HFS
		20	3/16/14 S B H
		21	2/17/15 S B H
		22	2-20-16 HFS
		23	3/25/19 BMOK
		24	

KEY MAP

**BRAXTON COUNTY**  
 STATE OF WEST VIRGINIA  
 Office of Assessor

DISTRICT **BIRCH** DISTRICT

SHEET NO: **5-M**

Date, Aerial Photography: 4-22-60  
 Date, Map: 9-23-62