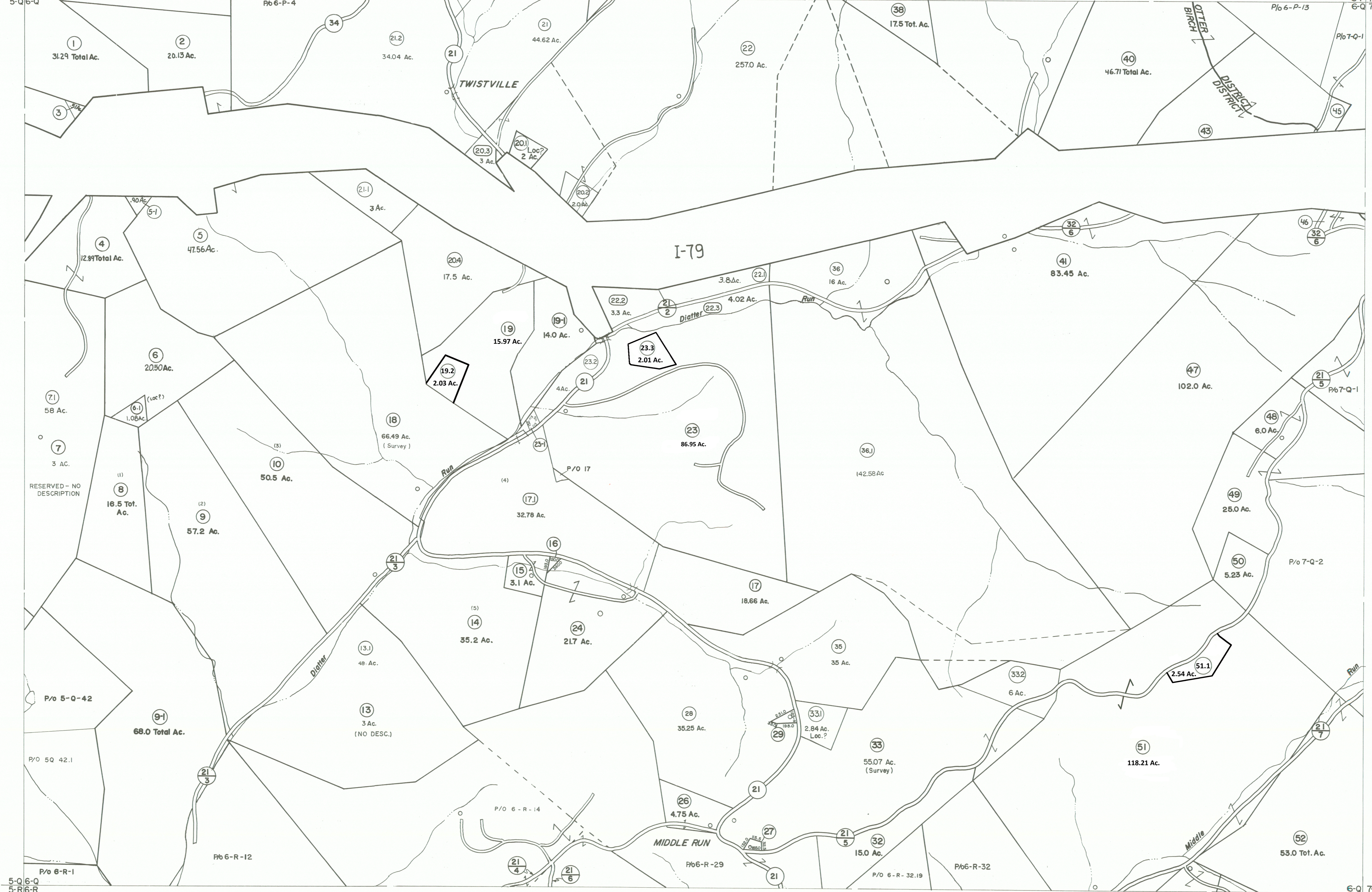


5-P-6-P  
5-Q-6-Q

6-P-7-P  
6-Q-7-Q



5-Q-6-Q  
5-R-6-R

6-Q-7-Q  
6-R-7-R

**For Tax Purposes Only**

Prepared by  
**VOGT, IVERS AND ASSOCIATES**  
ENGINEERS-ARCHITECTS  
CHARLESTON, W.VA.  
CINCINNATI, OHIO

Property line	---
Edge of pavement or roadway	---
Corporation line	---
District line	---
County line	---

Original lot line	---
Parcel or index number	(15)
Improvement	(P)
Railroad	+

Revisions			
1	PARCEL 5-1 ADDED 6-24-63	9	Revised to 7-1-85
2	PARCEL 9-1 ADDED 6-24-63	10	Revised to 7-1-87
3	PARCEL 19-1 ADDED 6-24-63	11	REV. TO 1-1-88
4	2-23-73 Jack Reeves	12	OGIS 2/29/91
5	P/W	13	EXCALIBUR GRAPHICS 5/93
6	OG.I.S 1-1-94	14	J.E.B 4/19/08
7	" " 2-1-93	15	OGIS 4/26/95
8	7/1/84	16	OG.I.S 6-1-96
		17	4-15-98 J.E.B
		18	ESI 5/30/01
		19	ESI 6/13/02
		20	4/30/05
		21	4/9/06
		22	4/19/08
		23	2-20-16
		24	3/26/19

KEY MAP

5P 6P 7P
5Q 6Q 7Q
5R 6R 7R

**BRAXTON COUNTY**  
STATE OF WEST VIRGINIA  
Office of Assessor

DISTRICT  
**BIRCH DISTRICT**

SHEET NO: **6-Q**

Date, Aerial Photography: 4-22-60  
Date, Map: 9-22-62