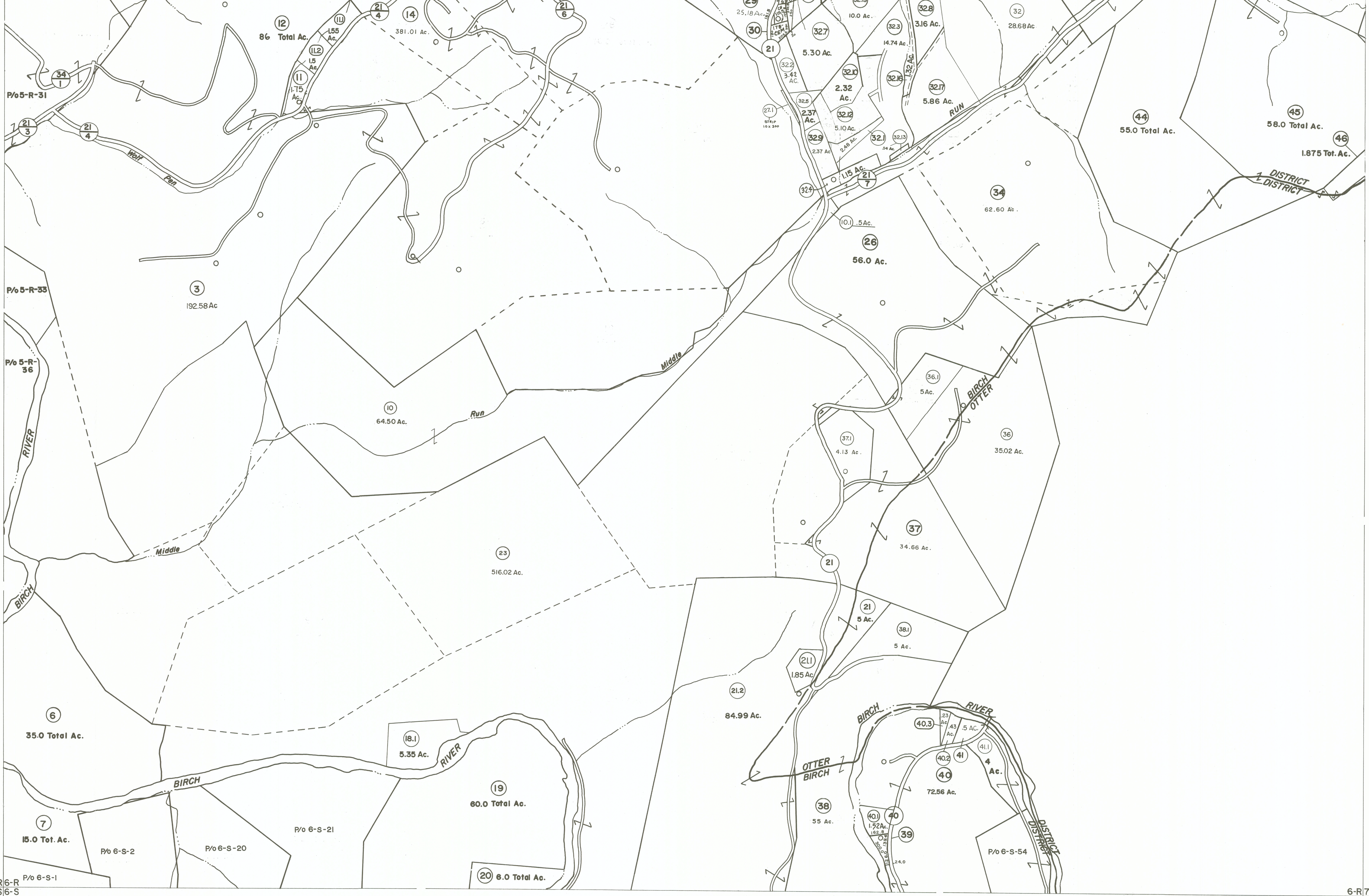


5-Q6-Q
5-R6-R

6-Q7-Q
6-R7-R



5-R6-R
5-S6-S

6-R7-R
6-S7-S

For Tax Purposes Only

Prepared by
VOGT, IVERS AND ASSOCIATES
ENGINEERS-ARCHITECTS
CHARLESTON, W.VA.
CINCINNATI, OHIO

Property line	—	Original lot line	- - - - - (15)
Edge of pavement or roadway	—	Parcel or index number	⊙
Corporation line	—	Improvement	○
District line	—	Railroad	—
County line	—		

Revisions			
1	PW	9	REV. TO 1-1-88 NCS
2	Revised to 7-80	10	OGIS 2/9/91 DSH
3	" " 7-83	11	EXCALIBUR GRAPHICS 5/93
4	7/1/84 RLB	12	O.G.I.S. 1-1-95 J.E.B
5	Revised to 7-1-85	13	OGIS 4/26/95 SAJ
6	Revised to 7-1-86	14	O.G.I.S. 6-1-96 J.E.B
7	Revised to 7-1-87	15	4-15-98 J.E.B
8		16	
		17	ESI 6/13/02 REK
		18	4/30/03 SBH
		19	5/2/04 SBH
		20	4/30/05 SBH
		21	4/19/08 SBH
		22	3-19-10 HCS
		23	2-20-16 HCS
		24	

KEY MAP

5-Q 6-Q 7-Q
5-R 6-R 7-R
5-S 6-S 7-S

BRAXTON COUNTY

STATE OF WEST VIRGINIA

Office of Assessor

DISTRICT
BIRCH DISTRICT

SHEET NO: **6-R**

Date, Aerial Photography: 4-22-60
Photo No: BR-14-167
Date, Map: 9-22-62
Scale: 1" = 400'