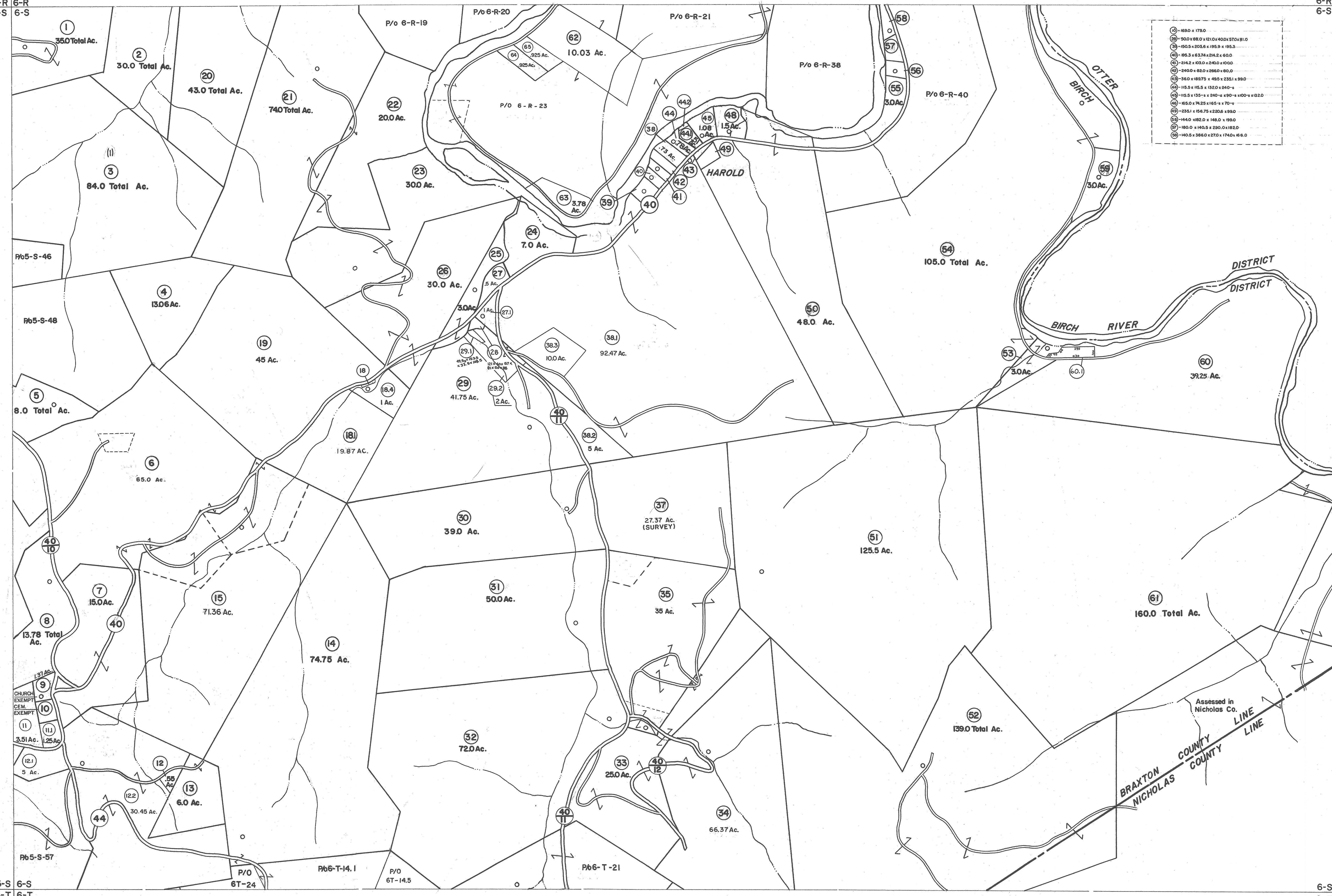


5-R 6-R  
5-S 6-S

6-R 7-R  
6-S 7-S



①	1650 x 1750
②	500 x 88.0 x 1210 x 40 x 570 x 81.0
③	150.3 x 203.6 x 195.9 x 195.3
④	89.3 x 83.7 x 29.2 x 60.0
⑤	246.2 x 103.5 x 290.0 x 100.0
⑥	240.0 x 82.0 x 266.0 x 80.0
⑦	36.0 x 187.5 x 425 x 235.1 x 99.0
⑧	115.5 x 115.5 x 132.0 x 104.1
⑨	115.5 x 135.1 x 340.1 x 100.1 x 100.1 x 132.0
⑩	155.0 x 74.25 x 165.1 x 70.1
⑪	235.1 x 156.75 x 226.5 x 190.0
⑫	144.0 x 82.0 x 148.0 x 188.0
⑬	180.0 x 140.5 x 230.0 x 182.0
⑭	140.5 x 366.0 x 270.1 x 174.0 x 166.0

5-S 6-S  
5-T 6-T

6-S 7-S  
6-T 7-T

**For Tax Purposes Only**

Prepared by  
**VOGT, IVERS AND ASSOCIATES**  
 ENGINEERS-ARCHITECTS  
 CHARLESTON, W.VA.  
 CINCINNATI, OHIO

Property line	Original lot line	(15)
Edge of pavement or roadway	Deed lot number	(15)
Corporation line	Parcel or index number	(15)
District line	Improvement	(15)
County line	Railroad	(15)

Revisions			
1	DW	9	REV. TO 1-1-88 NCS
2	Rev. to 7-80	10	OGIS 2/9/91 DSH
3	" 7-1-83 C.B.G.	11	O.G.I.S 1-1-95 J.E.B.
4	7/1/84 RLB	12	5-1-97 J.E.B.
5	Revised to 7-1-85 J.E.	13	4-15-98 J.E.B.
6	Revised to 7-1-86 J.E.	14	5-1-99 J.E.B.
7	Revised to 7-1-87 J.E.	15	ESI 5/30/01 REK
8		16	
		17	ESI 6/13/02 REK
		18	4/30/03 S.B.H.
		19	4/12/07 S.B.H.
		20	4/19/08 S.B.H.
		21	3/16/14 S.B.H.
		22	2/21/15 S.B.H.
		23	
		24	

KEY MAP

5R	6R	7R
5S	6S	7S
5T	6T	7T

**BRAXTON COUNTY**  
 STATE OF WEST VIRGINIA  
 Office of Assessor

DISTRICT  
**BIRCH DISTRICT**

SHEET NO: 6-S

Date, Aerial Photography: 4-22-60 Date, Map: 9-22-62  
 Photo No: BR-14-166 Scale: 1" = 400'