

BU-1 BU-2

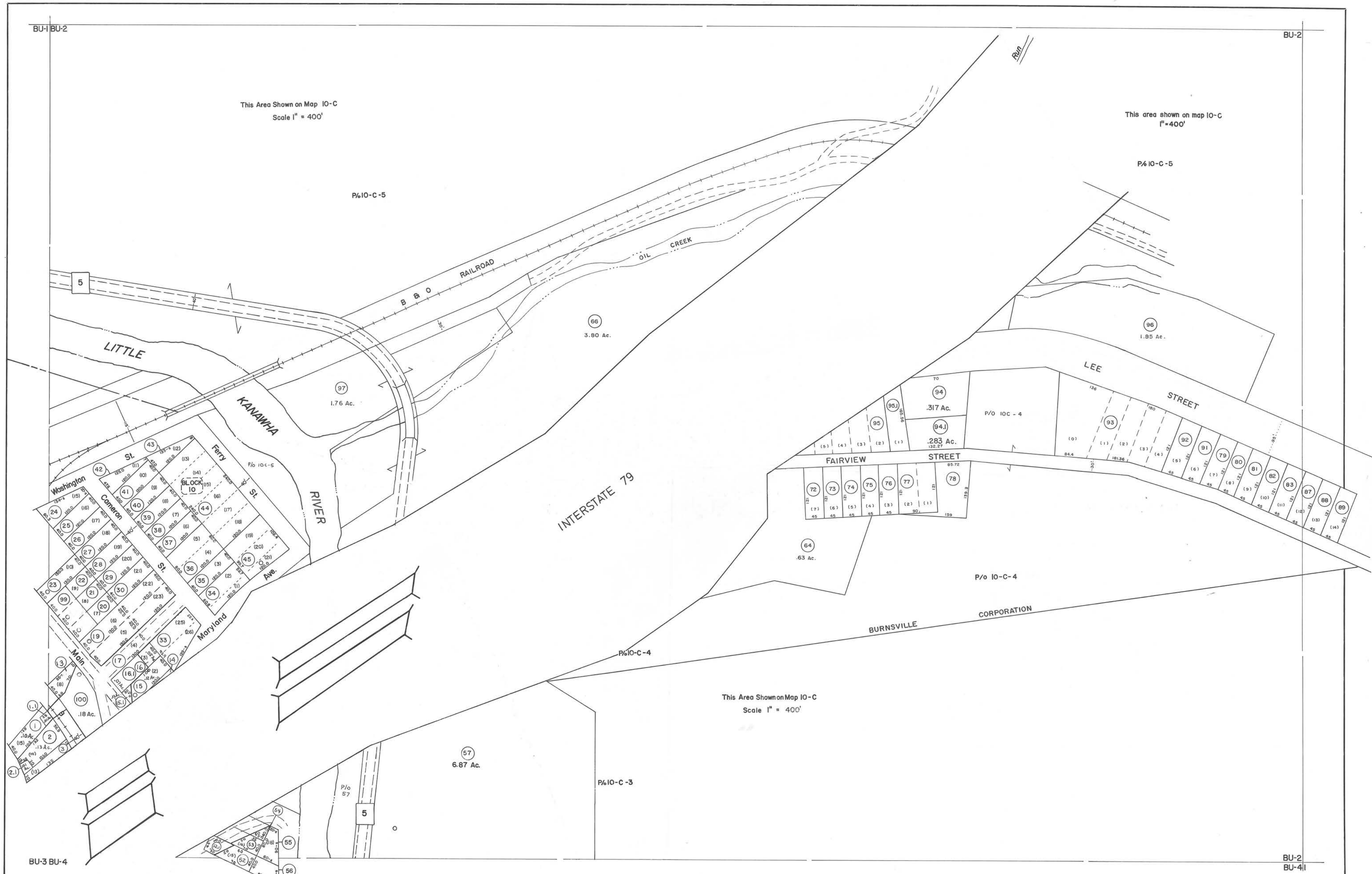
BU-2

This Area Shown on Map 10-C
Scale 1" = 400'

This area shown on map 10-C
1" = 400'

P/6 10-C-5

P/6 10-C-5



This Area Shown on Map 10-C
Scale 1" = 400'

BU-3 BU-4

BU-2

BU-41

For Tax Purposes Only



Prepared by
VOGT, IVERS AND ASSOCIATES
 ENGINEERS-ARCHITECTS
 CHARLESTON, W.VA.
 CINCINNATI, OHIO

Property line	—————
Edge of pavement or roadway	- - - - -
Corporation line	—————
District line	—————
County line	—————

Original lot line	—————
Deed lot number	(15)
Parcel or index number	(29)
Improvement	o
Railroad	—————

Revisions	
1	3-8-76 T.G.
2	Revised to 7-1-80
3	7-1-83 C.B.G.
4	7/1/84 RLB
5	REV. TO 1-1-88 NGS
6	OGIS 4/26/95 SAJ
7	5-1-97 J.E.B.
8	4-15-98 J.E.B.
9	5-1-99 J.E.B.
10	ESI 4-27-00 REK
11	ESI 6/6/02 REK
12	4/9/06 S&H
13	6/9/12 S&H
14	
15	
16	
17	
18	
19	
20	
21	
22	
23	
24	



BRAXTON COUNTY
 STATE OF WEST VIRGINIA
 Office of Assessor

DISTRICT	TOWN OF BURNSVILLE
SHEET NO:	BU-2
Date, Aerial Photography:	4-14-60
Photo No:	BRB-12-53
Date, Map:	6-15-62
Scale:	1" = 100'