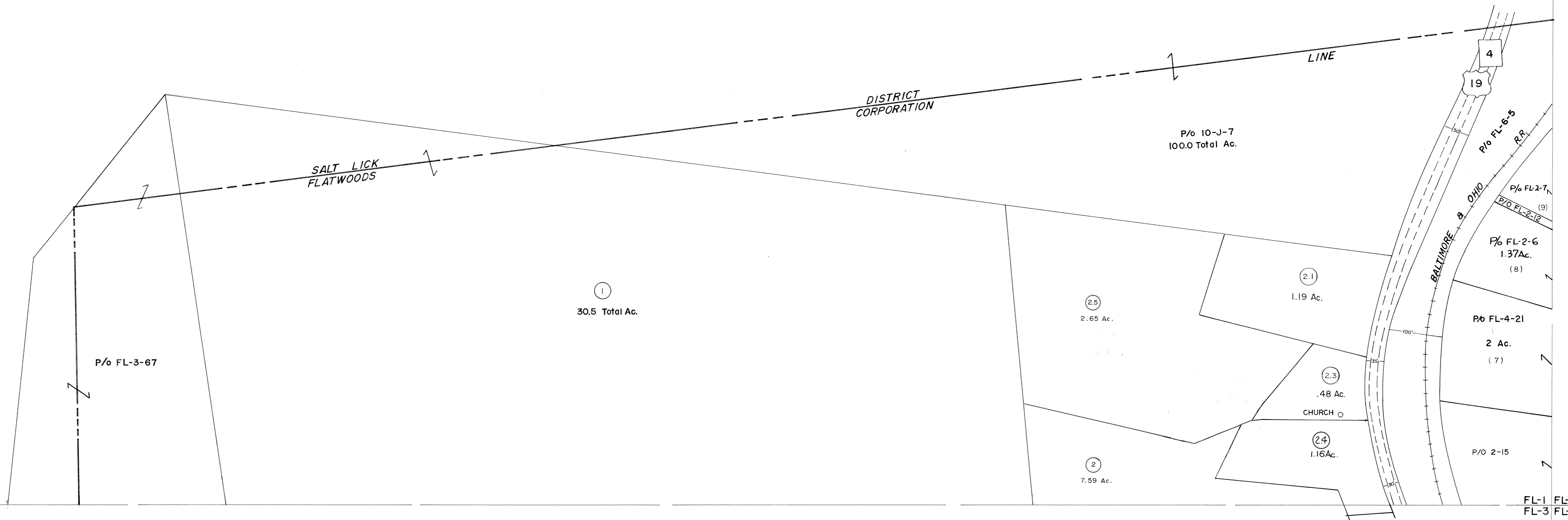
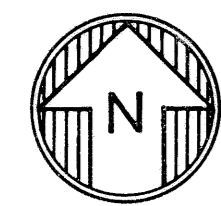


This area shown on map 10-J  
1" = 400'



FL-1  
FL-3

FL-1 FL-2  
FL-3 FL-4



For Tax Purposes Only

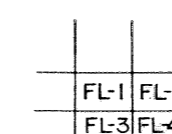
Prepared by  
**VOGT, IVERS AND ASSOCIATES**  
ENGINEERS-ARCHITECTS  
CHARLESTON, W.VA.  
CINCINNATI, OHIO

Property line \_\_\_\_\_  
Edge of pavement or roadway - - - - -  
Corporation line - - - - -  
District line - - - - -  
County line - - - - -

Original lot line - - - - -  
Deed lot number (15)  
Parcel or index number (19)  
Improvement (19)  
Railroad (19)

Revisions			
1	3-4-76	T.G.	9
2	Revised to 7-1-81	DSH	10
3	" " 7-1-83	DSH	11
4	7/1/84	RLB	12
5	Revised to 7-1-84	RLB	13
6	Rev. to 1-1-88	R.E.B.	14
7	OGIS 1/27/91	DSH	15
8			16
9	OGIS 5/1/95	SAJ	17
10	O.G.I.S 6-1-96	J.E.B.	18
11			19
12			20
13			21
14			22
15			23
16			24

KEY MAP



**BRAXTON COUNTY**

STATE OF WEST VIRGINIA

Office of Assessor

DISTRICT  
**TOWN OF FLATWOODS**

SHEET NO: **FL-1**

Date, Aerial Photography: 4-20-60  
Photo No: BR-14-98

Date, Map: 4-1-63  
Scale: 1"=100'