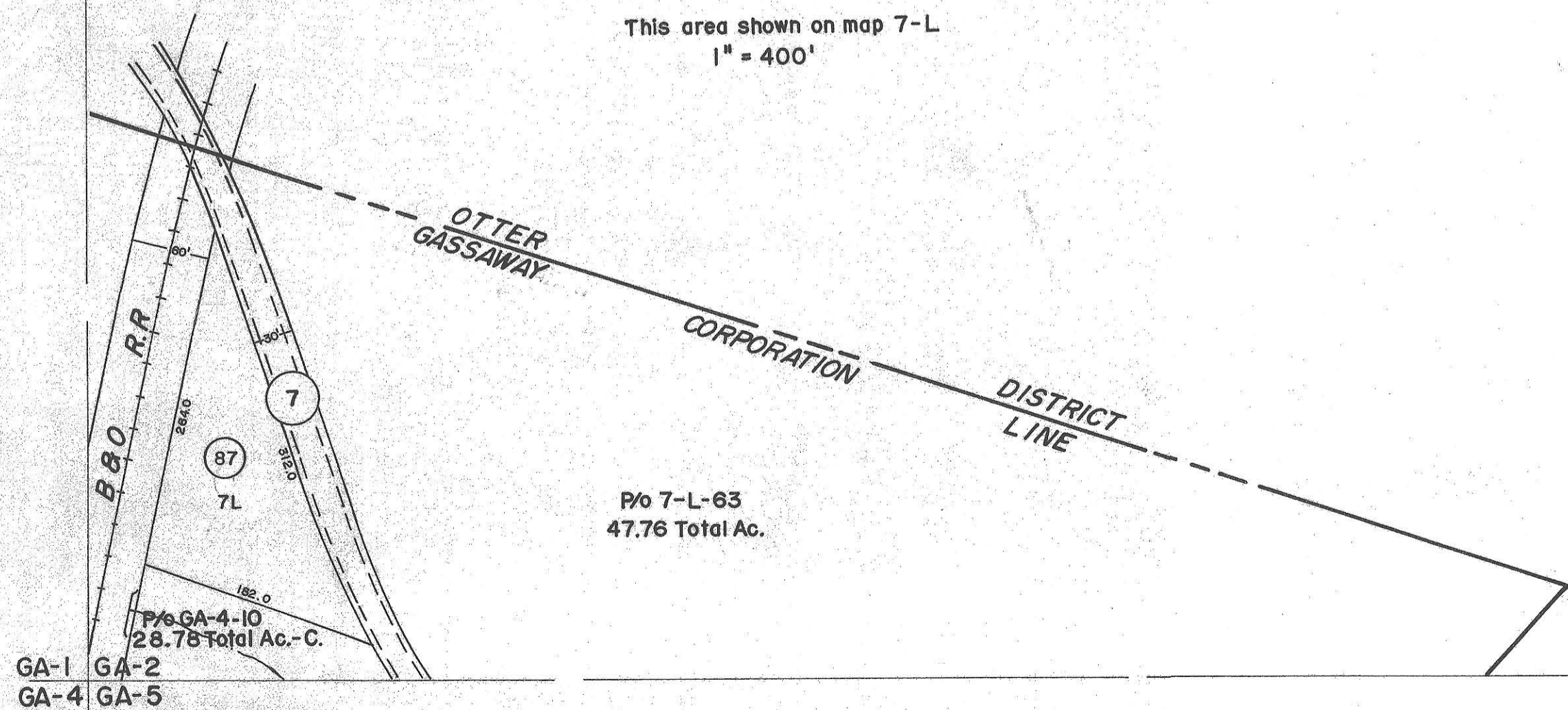
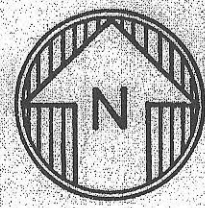


GA-1 GA-2



GA-2
GA-5



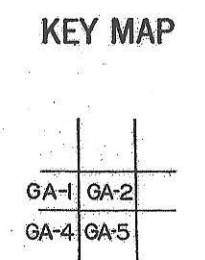
For Tax Purposes Only

Prepared by
VOGT, IVERS AND ASSOCIATES
ENGINEERS-ARCHITECTS
CHARLESTON, W.VA.
CINCINNATI, OHIO

Property line —————
Edge of pavement or roadway - - - - -
Corporation line - - - - -
District line - - - - -
County line - - - - -

Original lot line - - - - -
Deed lot number (15)
Parcel or index number (15)
Improvement (15)
Railroad (15)

Revisions		
1	Revised to 1-1-80 SK	9
2	Revised to 7-1-83	10
3	7/1/84 RLB	11
4	OGIS 2/4/91 DSH	12
5	2/20/15 SBH	13
6		14
7		15
8		16
		17
		18
		19
		20
		21
		22
		23
		24



BRAXTON COUNTY

STATE OF WEST VIRGINIA

Office of Assessor

DISTRICT
TOWN OF GASSAWAY

SHEET NO; **GA-2**

Date, Aerial Photography: 4-22-60 Date, Map: 3-18-63
Photo No: BR-14-157 Scale: 1" = 100'