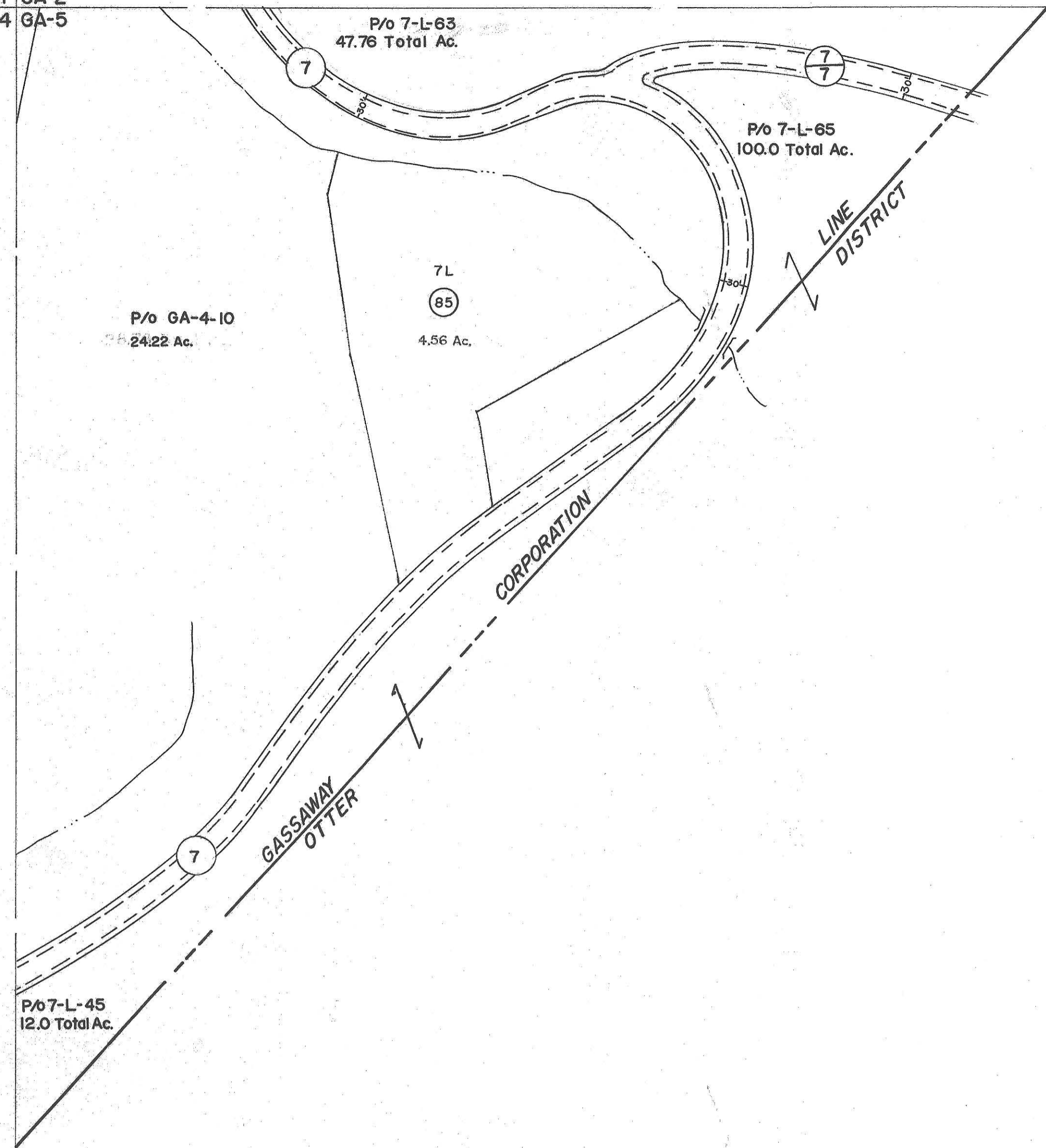
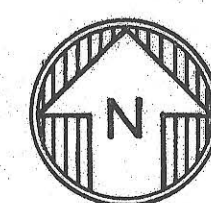


GA-1 GA-2  
GA-4 GA-5

GA-2  
GA-5



GA-4 GA-5  
GA-7



For Tax Purposes Only

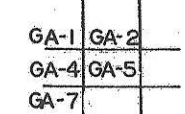
Prepared by  
**VOGT, IVERS AND ASSOCIATES**  
 ENGINEERS-ARCHITECTS  
 CHARLESTON, W.VA.  
 CINCINNATI, OHIO

Property line ————  
 Edge of pavement or roadway - - - -  
 Corporation line - - - - -  
 District line - - - - -  
 County line - - - - -

Original lot line - - - - - (15)  
 Deed lot number ————  
 Parcel or index number (85)  
 Improvement ————  
 Railroad ————

Revisions		
1	Revised to 7-1-80	9
2	" " 7-1-83	10
3	7/1/84 RLB	11
4	4-15-88 J.E.B.	12
5	2/20/15 S&H	13
6		14
7		15
8		16
		17
		18
		19
		20
		21
		22
		23
		24

KEY MAP



BRAXTON COUNTY

STATE OF WEST VIRGINIA

Office of Assessor

DISTRICT

TOWN OF GASSAWAY

SHEET NO: GA-5

Date, Aerial Photography: 4-22-60  
Photo No: BR-14-157

Date, Map: 3-20-63  
Scale: 1"=100'