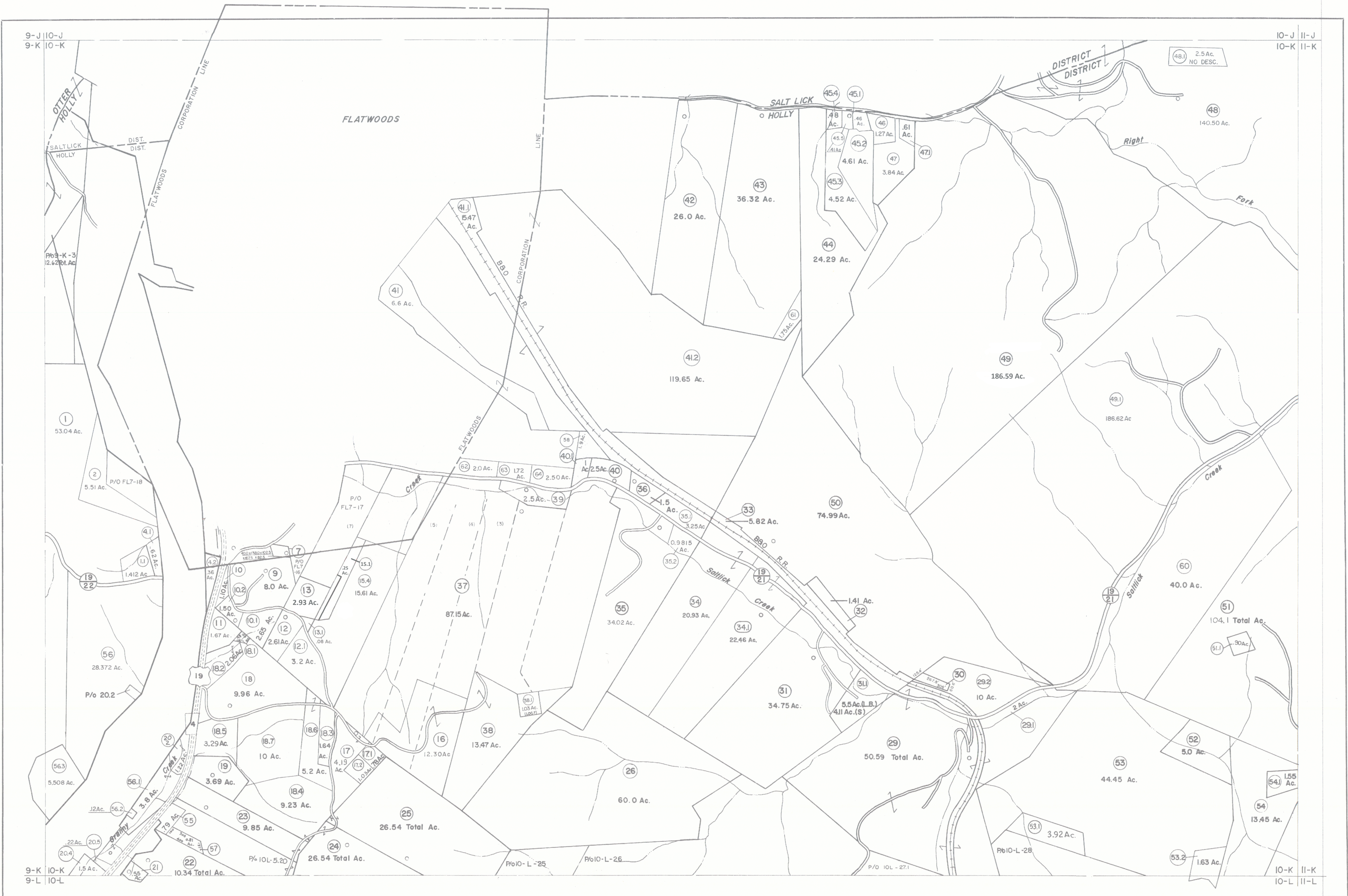


9-J 10-J
9-K 10-K

10-J 11-J
10-K 11-K



9-K 10-K
9-L 10-L

10-K 11-K
10-L 11-L

For Tax Purposes Only

Prepared by
VOGT, IVERS AND ASSOCIATES
 ENGINEERS-ARCHITECTS
 CHARLESTON, W.VA.
 CINCINNATI, OHIO

Property line	Original lot line	(15)
Edge of pavement or roadway	Deed lot number	(15)
Corporation line	Parcel or index number	(99)
District line	Improvement	o
County line	Railroad	o

Revisions		REV TO 1-1-88		R.E.B.		17	
1	2-8-73 Jack Reeves	9	REV TO 1-1-88	R.E.B.	17	ESI 4-27-00	REK
2	3-4-76	10	OGIS 2/9/91	DSH	18	ESI 5/31/01	REK
3	Revised to 7-80	11	EXCALIBUR GRAPHICS	5/93	19	5/2/04	S&H
4	" 7-1-83	12	OGIS 5/1/95	SAJ	20	5/12/05	S&H
5	7-1-84	13	O.G.I.S 6-1-96	J.E.B.	21	4/9/06	S&H
6	Revised to 7-1-84	14	5-1-97	J.E.B.	22	4/15/09	S&H
7	Revised to 7-1-84	15	4-15-96	J.E.B.	23	4-8-11	445
8	July, 1987	16	5-1-99	J.E.B.	24		

4/11/13	S&H
3/16/14	S&H
KEY MAP	S&H
2/22/15	S&H
2/8/17	SLS
9/10/17	JK
9/10/17	JK
9/10/17	JK
3/15/19	BMOK

BRAXTON COUNTY

STATE OF WEST VIRGINIA

Office of Assessor

DISTRICT
HOLLY DISTRICT

SHEET NO: 10-K

Date, Aerial Photography: 4-20-60
 Photo No: BR-14-98

Date, Map: 9-21-62
 Scale: 1" = 400'