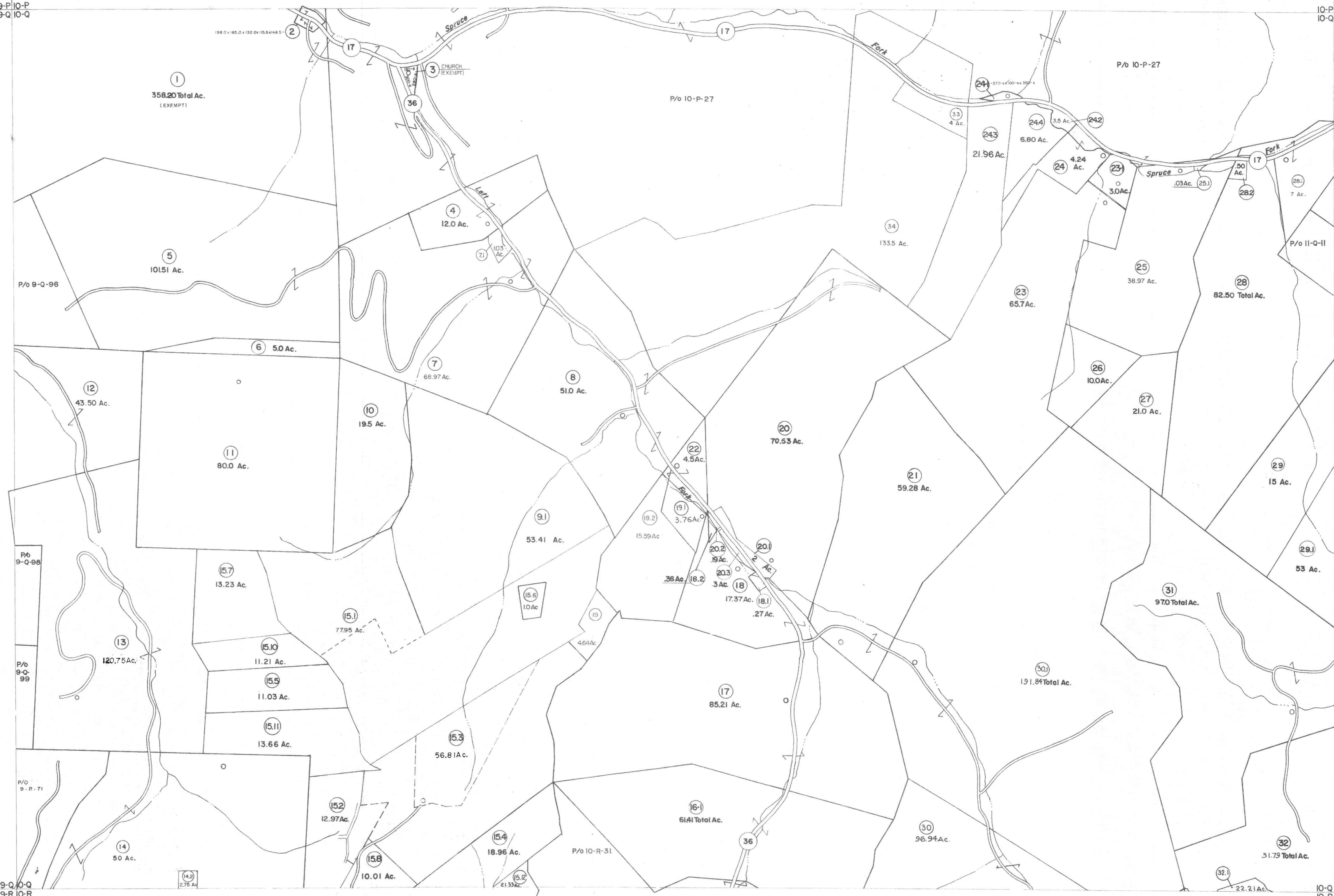


9-P 10-P  
9-Q 10-Q

10-P 11-P  
10-Q 11-Q

9-Q 10-Q  
9-R 10-R

10-Q 11-Q  
10-R 11-R



**For Tax Purposes Only**

Prepared by  
**VOGT, IVERS AND ASSOCIATES**  
 ENGINEERS-ARCHITECTS  
 CHARLESTON, W. VA.  
 CINCINNATI, OHIO

Property line	—————	Original lot line	-----
Edge of pavement or roadway	-----	Dead lot number	(15)
Corporation line	-----	Parcel or index number	(29)
District line	-----	Improvement	o
County line	-----	Railroad	———x———

Revisions			
1	3-5-76	DS	9
2	10-28-80	DS	10
3	Revised to 7-80	DS	11
4	" " 7-1-83	CBG	12
5	7-1-84	L.E.S.	13
6	Revised to 7-1-85	DS	14
7	Revised to 7-1-86	DS	15
8	1-1-87	DS	16
9	REV. TO 1-1-88	R.E.B.	17
10	OGIS 2/9/91	DSH	18
11	EXCALIBUR GRAPHICS 5/93	DSH	19
12	O.G.I.S 6-1-96	J.E.B	20
13	5-1-97	J.E.B	21
14	5-1-99	J.E.B	22
15	ESI 5/31/01	REK	23
16	2-20-16	J.S	24
17	2/8/17	SLS	25

KEY MAP  
 9P 10P 11P  
 9Q 10Q 11Q  
 9R 10R 11R

**BRAXTON COUNTY**  
 STATE OF WEST VIRGINIA  
 Office of Assessor

DISTRICT  
**HOLLY DISTRICT**

SHEET NO: **10-Q**

Date, Aerial Photography: 4-22-62      Date, Map: 9-6-62