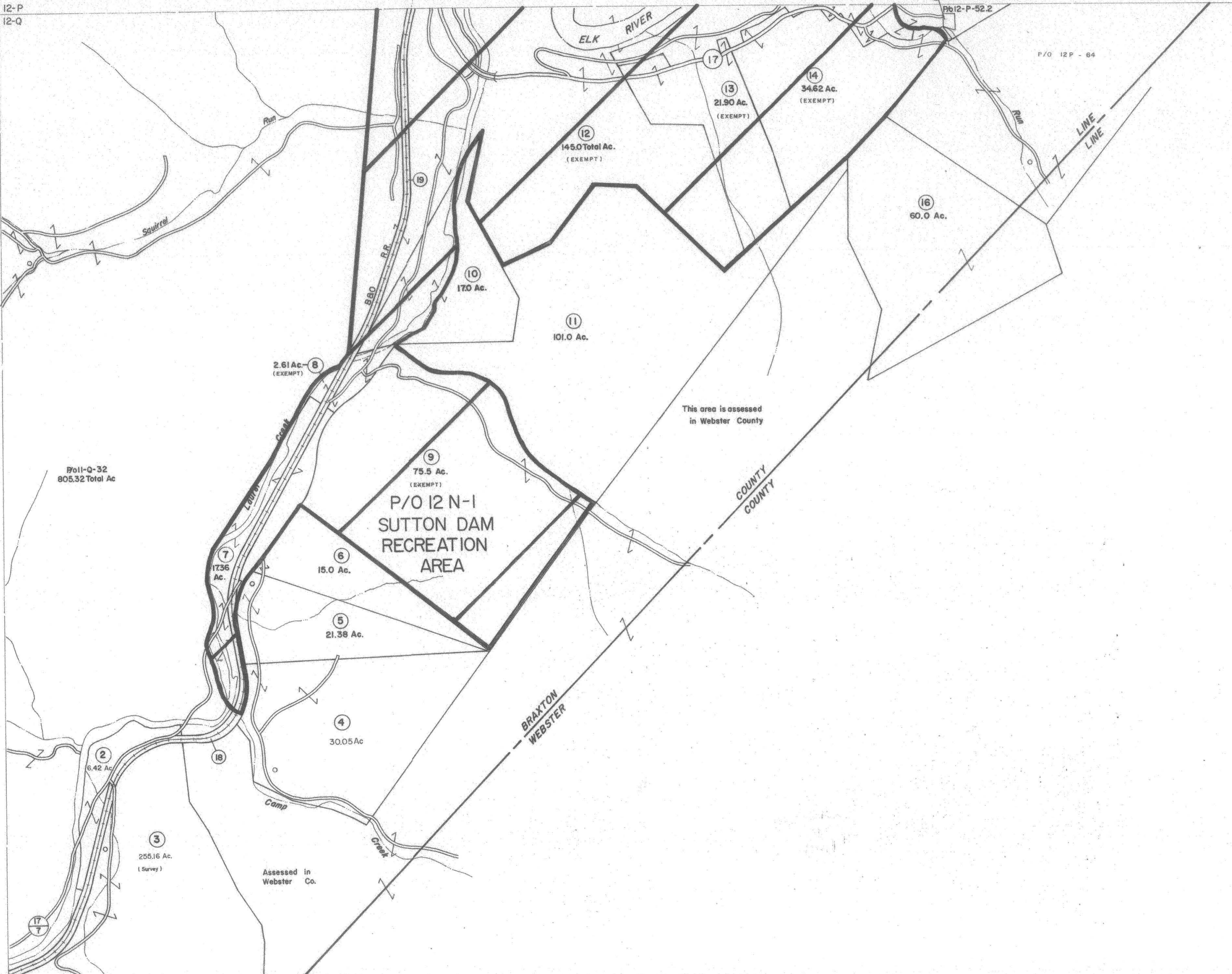


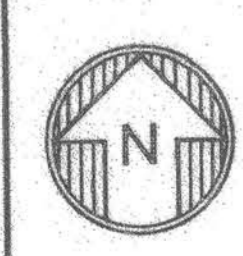
11-P 12-P
11-Q 12-Q

20 .83Ac. CENTRALIA CEM.
Pb12-P-52.2

P/O 12P - 64



11-Q 11-R
12-R



For Tax Purposes Only

Prepared by
VOGT, IVERS AND ASSOCIATES
ENGINEERS-ARCHITECTS
CHARLESTON, W.VA.
CINCINNATI, OHIO

Property line ————
Edge of pavement or roadway ————
Corporation line ————
District line - - - - -
County line - - - - -

Original lot line ————
Deed lot number (15)
Parcel or index number (20)
Improvement (o)
Railroad ————

| Revisions | | | |
|-----------|--------------------|--------|-----------------|
| 1 | 3-8-76 | DS | 9 3-19-10 H.A.S |
| 2 | Revised to 7-80 | DL | 10 2/9/17 SLS |
| 3 | Revised to 7-1-83 | SLP | 11 |
| 4 | 7-1-84 | L.E.S. | 12 |
| 5 | July, 1987 | TRL | 13 |
| 6 | EXCALIBUR GRAPHICS | 5/93 | 14 |
| 7 | 5-1-97 | J.E.B | 15 |
| 8 | 4-15-98 | J.E.B | 16 |

KEY MAP

11P 12P 13P
11Q 12Q 13Q
11R 12R

BRAXTON COUNTY
STATE OF WEST VIRGINIA
Office of Assessor

DISTRICT
HOLLY DISTRICT

SHEET NO: 12-Q

Date, Aerial Photography: 4-20-60 Date, Map: 9-24-62
Photo No: BR-14-52 Scale: 1" = 400'