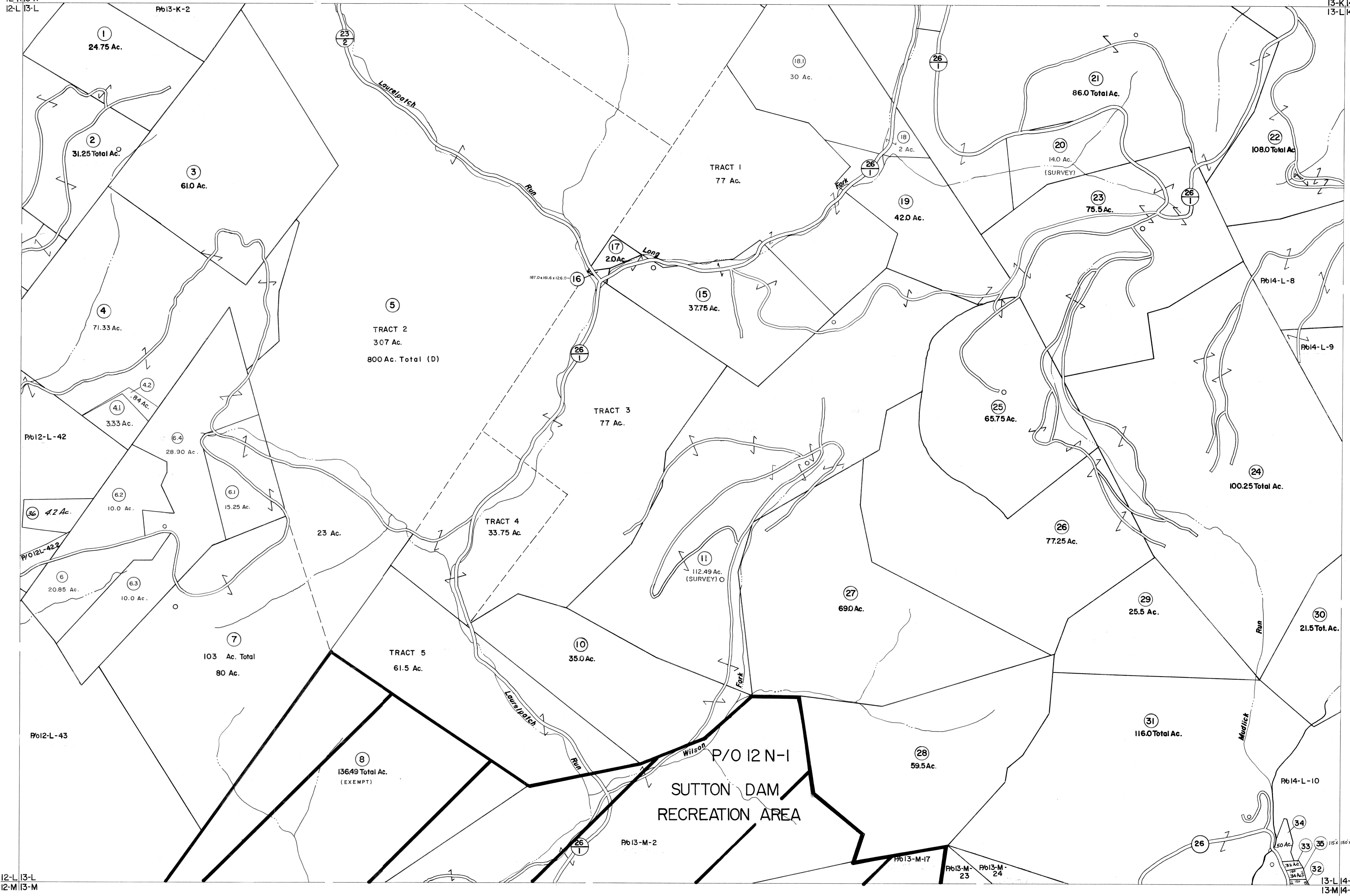


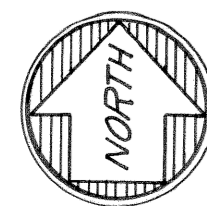
12-K|3-K  
12-L|3-L

13-K|14-K  
13-L|14-L



12-L|13-L  
12-M|13-M

13-L|14-L  
13-M|14-M



For Tax Purposes Only

Prepared by  
**VOGT, IVERS AND ASSOCIATES**  
 ENGINEERS-ARCHITECTS  
 CHARLESTON, W.VA.  
 CINCINNATI, OHIO

Property line —————  
 Edge of pavement or roadway - - - - -  
 Corporation line - - - - -  
 District line - - - - -  
 County line - - - - -

Original lot line - - - - -  
 Dead lot number (15) ————  
 Parcel or index number (16) ————  
 Improvement ————  
 Railroad ————

Revisions	
1 3-8-76 DS	9 ESI 6/14/02 REK 17
2 Revised to 7-80	10 4/26/05 SBH 18
3 Revised to 7-83	11 4/9/06 SBH 19
4 7-1-84 L.E.S.	12
5 July 1987 TRL	13
6 Rev. to 1-1-88 R.E.B.	14
7 O.G.I.S 6-1-96 J.E.B.	15
8 S. 1. 97 J.E.B.	16

KEY MAP  
 12K|13K|14K  
 12L|13L|14L  
 12M|13M|14M

**BRAXTON COUNTY**  
 STATE OF WEST VIRGINIA  
 Office of Assessor

DISTRICT  
**HOLLY DISTRICT**

SHEET NO: **13-L**

Date, Aerial Photography: **4-22-60** Date, Map: **9-20-62**  
 Photo No: **BR-14-46** Scale: **1" = 400'**