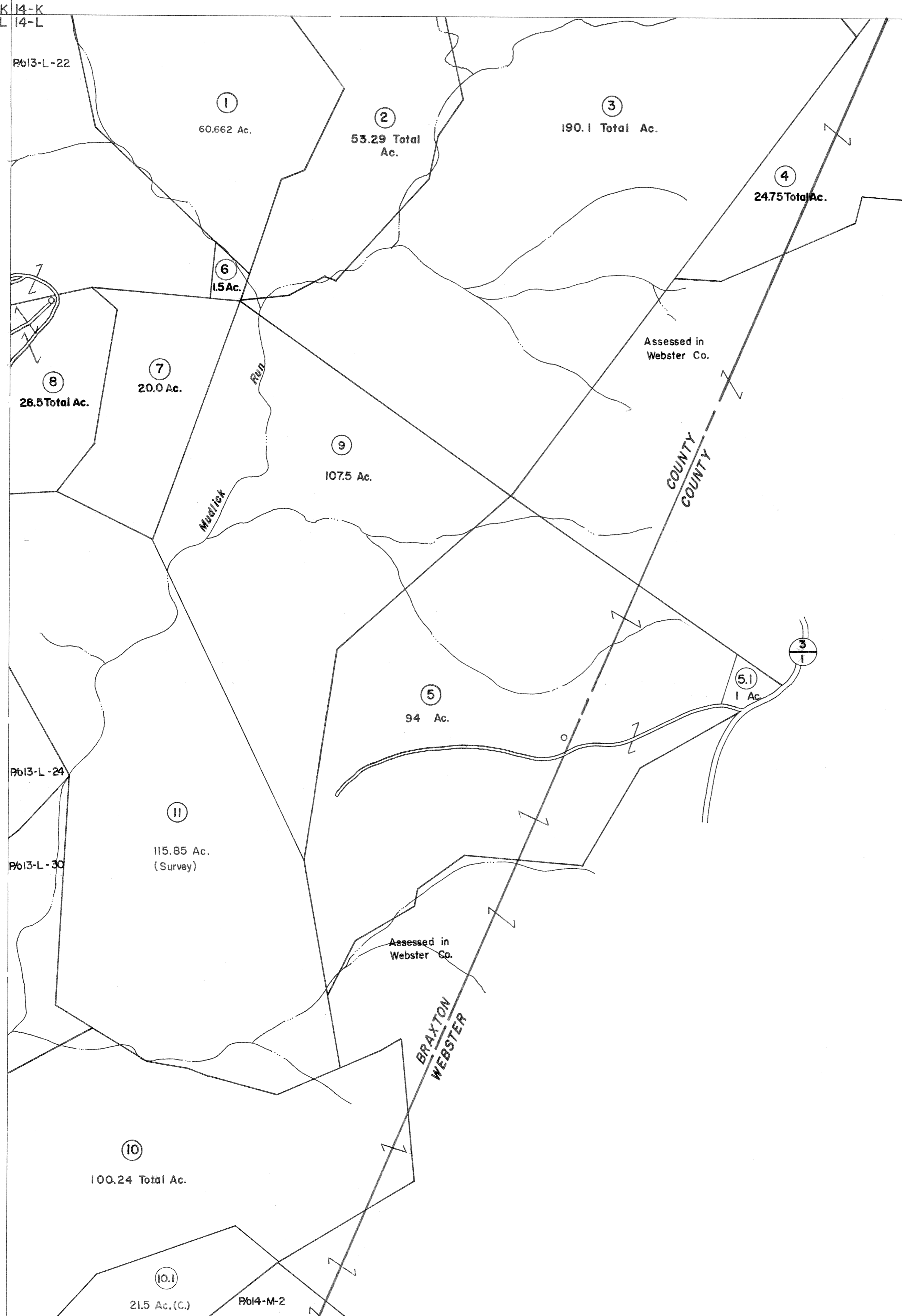


13-K 14-K  
13-L 14-L

13-L 14-L  
13-M 14-M

14-L  
14-M



**For Tax Purposes Only**  
Prepared by  
**VOGT, IVERS AND ASSOCIATES**  
ENGINEERS-ARCHITECTS  
CHARLESTON, W.VA.  
CINCINNATI, OHIO

Property line	-----	Original lot line	-----
Edge of pavement or roadway	-----	Deed lot number	(15)
Corporation line	-----	Parcel or index number	o
District line	-----	Improvement	o
County line	-----	Railroad	o

Revisions	
1	3-9-76 DS
2	Revised to 7-80 DS
3	" " 7-1-83 CBS
4	7-1-84 L.E.S.
5	July, 1987 TRL
6	EXCALIBUR GRAPHICS 5/93
7	4/19/04 S & H
8	

KEY MAP  
13K 14K  
13L 14L  
13M 14M

**BRAXTON COUNTY**  
STATE OF WEST VIRGINIA  
Office of Assessor

DISTRICT  
**HOLLY DISTRICT**  
SHEET NO: 14-L  
Date, Aerial Photography: 4-22-60 Date, Map: 9-20-62  
Photo No: BR-14-19 Scale: 1" = 400'