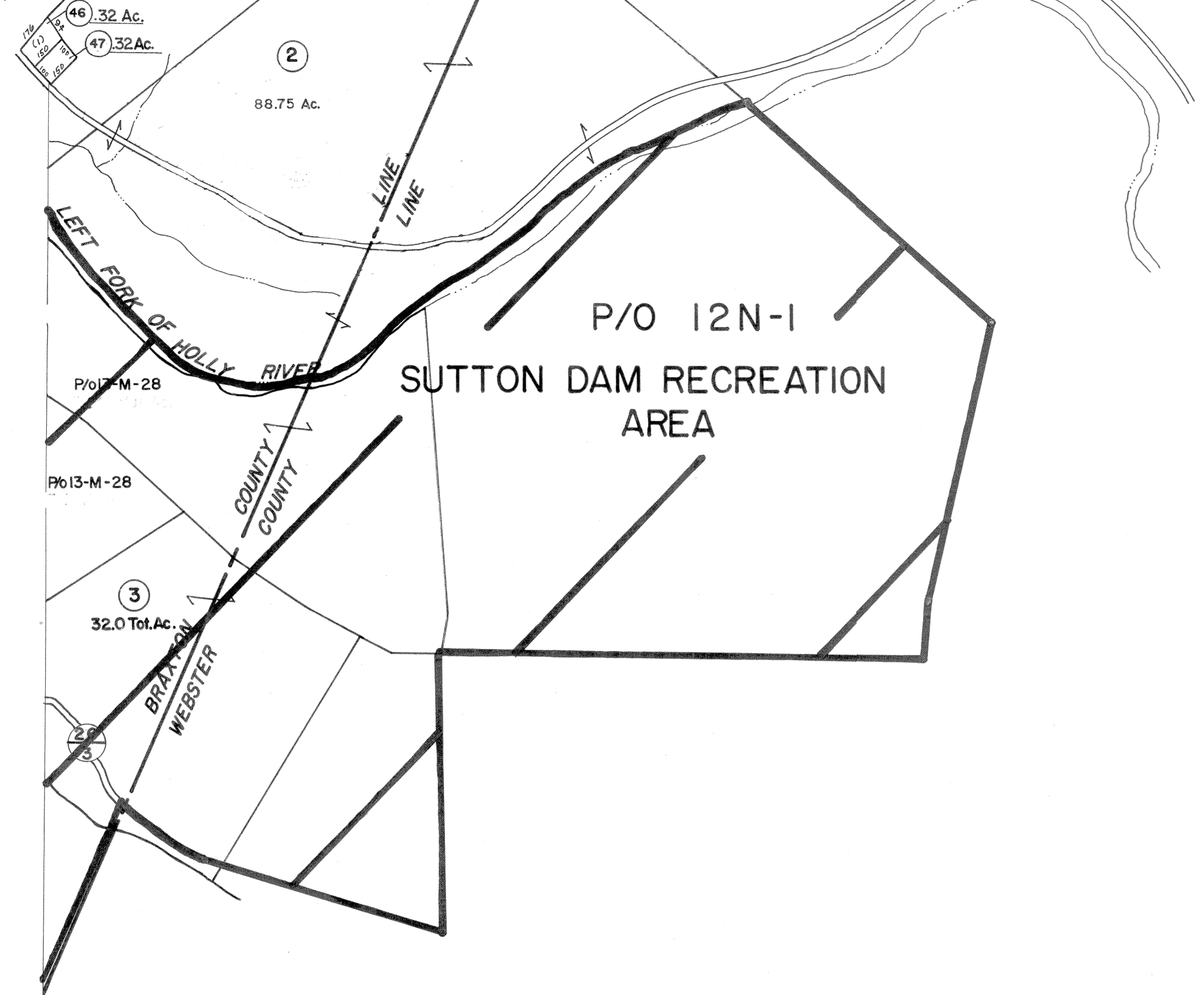
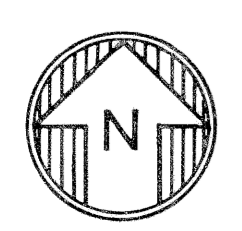


13-L 14-L  
 13-M 14-M P/O 14-L-10.1  
 P/O 14-L-10



13-M 14-M  
 13-N



For Tax Purposes Only  
 Prepared by  
**VOGT, IVERS AND ASSOCIATES**  
 ENGINEERS-ARCHITECTS  
 CHARLESTON, W.VA.  
 CINCINNATI, OHIO

Property line	—————	Original lot line	- - - - -
Edge of pavement or roadway	—————	Deed lot number	(15)
Corporation line	—————	Parcel or index number	(29)
District line	—————	Improvement	o
County line	—————	Railroad	—+—+—+—

Revisions		
1	2-8-73 Jack Reeves	9
2	3-9-76 DS	10
3	Revised to 7-80 DS	11
4	Revised to 7-83 DS	12
5	7-1-84 L.E.S.	13
6	5-1-99 J.E.B.	14
7		15
8		16



**BRAXTON COUNTY**  
 STATE OF WEST VIRGINIA  
 Office of Assessor

DISTRICT	HOLLY DISTRICT
SHEET NO: 14-M	
Date, Aerial Photography: 4-20-60	Date, Map: 9-25-62
Photo No: BR-14-21	Scale: 1" = 400'