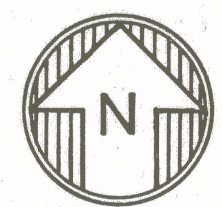
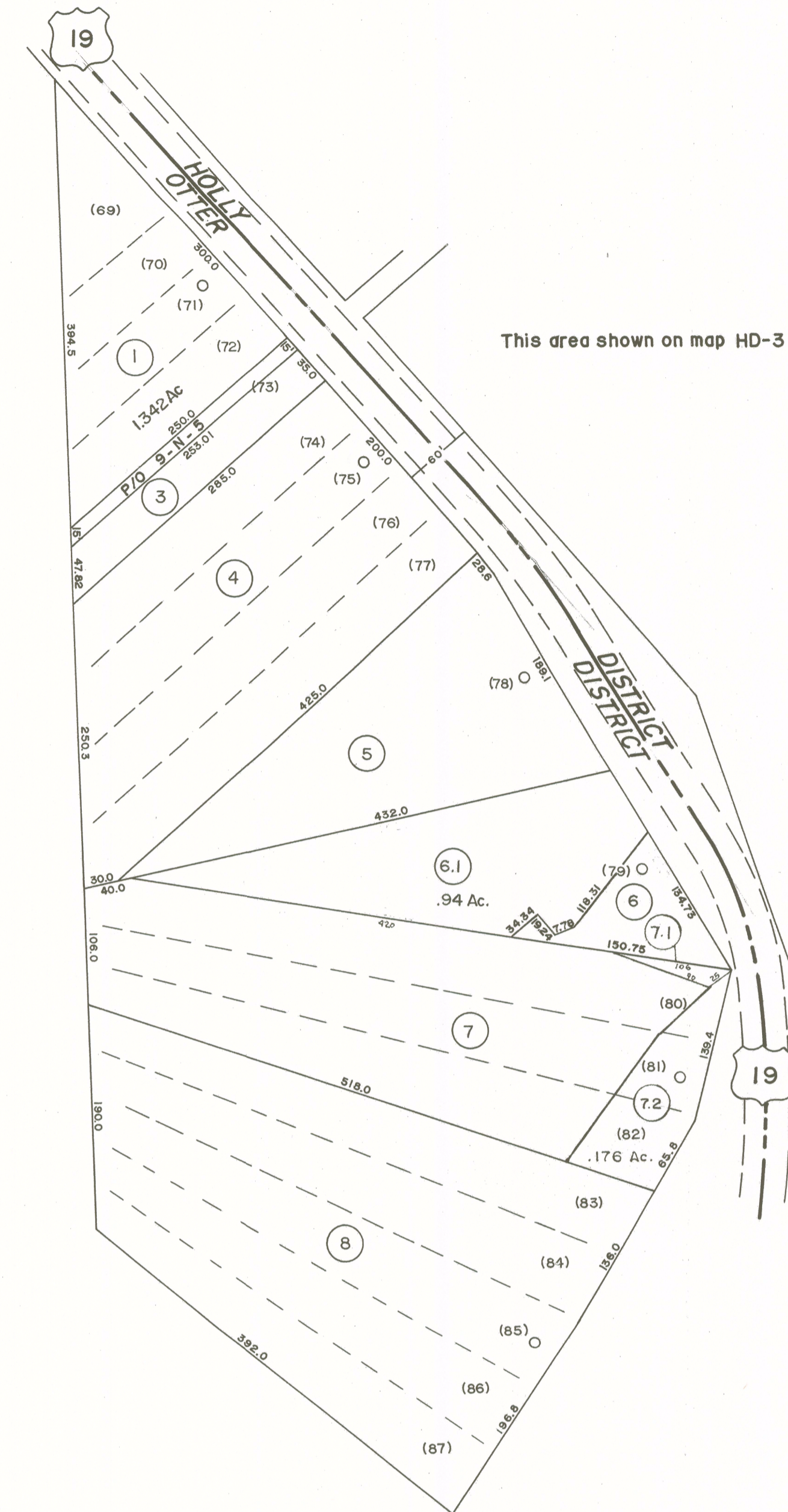


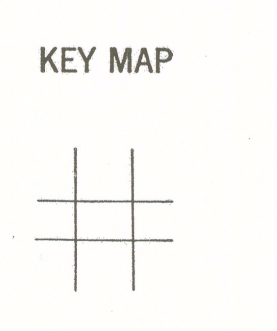
This area shown on map 9-N
1" = 400'



For Tax Purposes Only
 Prepared by
VOGT, IVERS AND ASSOCIATES
 ENGINEERS-ARCHITECTS
 CHARLESTON, W.VA.
 CINCINNATI, OHIO

Property line	—————	Original lot line	-----
Edge of pavement or roadway	—————	Deed lot number	(15)
Corporation line	-----	Parcel or index number	(16)
District line	-----	Improvement	o
County line	-----	Railroad	—+—+—

Revisions	
1	PW 9
2	Revised to 7-1-80 JSC 10
3	4-7-83 CJB 11
4	7/1/84 RLB 12
5	OGIS 2/10/91 DSH 13
6	O.G.I.S 1-1-95 J.E.B 14
7	5-1-97 J.E.B 15
8	2-20-10 J.E.S 16



BRAXTON COUNTY
 STATE OF WEST VIRGINIA
 Office of Assessor

DISTRICT
OTTER DISTRICT
 SHEET NO: OD-7
 Date, Aerial Photography: 4-14-60 Date, Map: 11-16-62
 Photo No: BRS-12-34 Scale: 1" = 100'