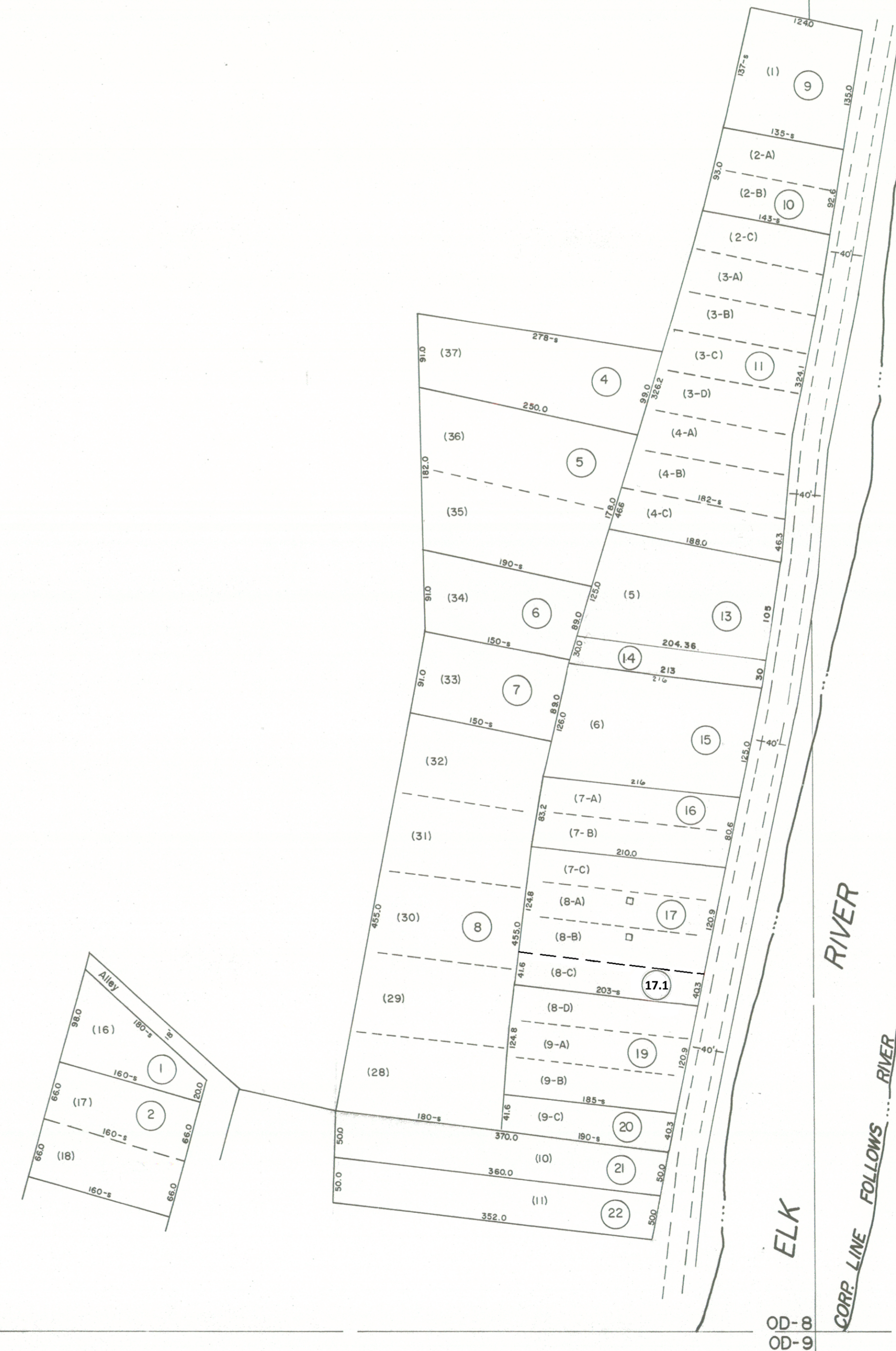


P/7-M-8



OD-8
OD-9



For Tax Purposes Only

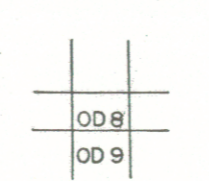
Prepared by
VOGT, IVERS AND ASSOCIATES
ENGINEERS-ARCHITECTS
CHARLESTON, W.VA.
CINCINNATI, OHIO

Property line ———
Edge of pavement or roadway - - - -
Corporation line - - - - -
District line - - - - -
County line - - - - -

Original lot line - - - - - (15)
Deed lot number (15)
Parcel or index number (15)
Improvement (15)
Railroad (15)

		Revisions			
1	PW	9	2/21/15	S&H	17
2	Revised to 7-1-81	10	3/19/19	BMOK	18
3	" " " 7-1-83	11			19
4	7/1/84	12		RLB	20
5	Revised to 7-1-87	13			21
6	4/9/06	14		S&H	22
7	6/9/12	15		S&H	23
8		16			24

KEY MAP



BRAXTON COUNTY

STATE OF WEST VIRGINIA

Office of Assessor

DISTRICT **OTTER DISTRICT**
RIVERSIDE ADDITION

SHEET NO: **OD-8**

Date, Aerial Photography: 4-22-60
Photo No: BRG-14-24

Date, Map: 3-B-62
Scale: 1" = 100'