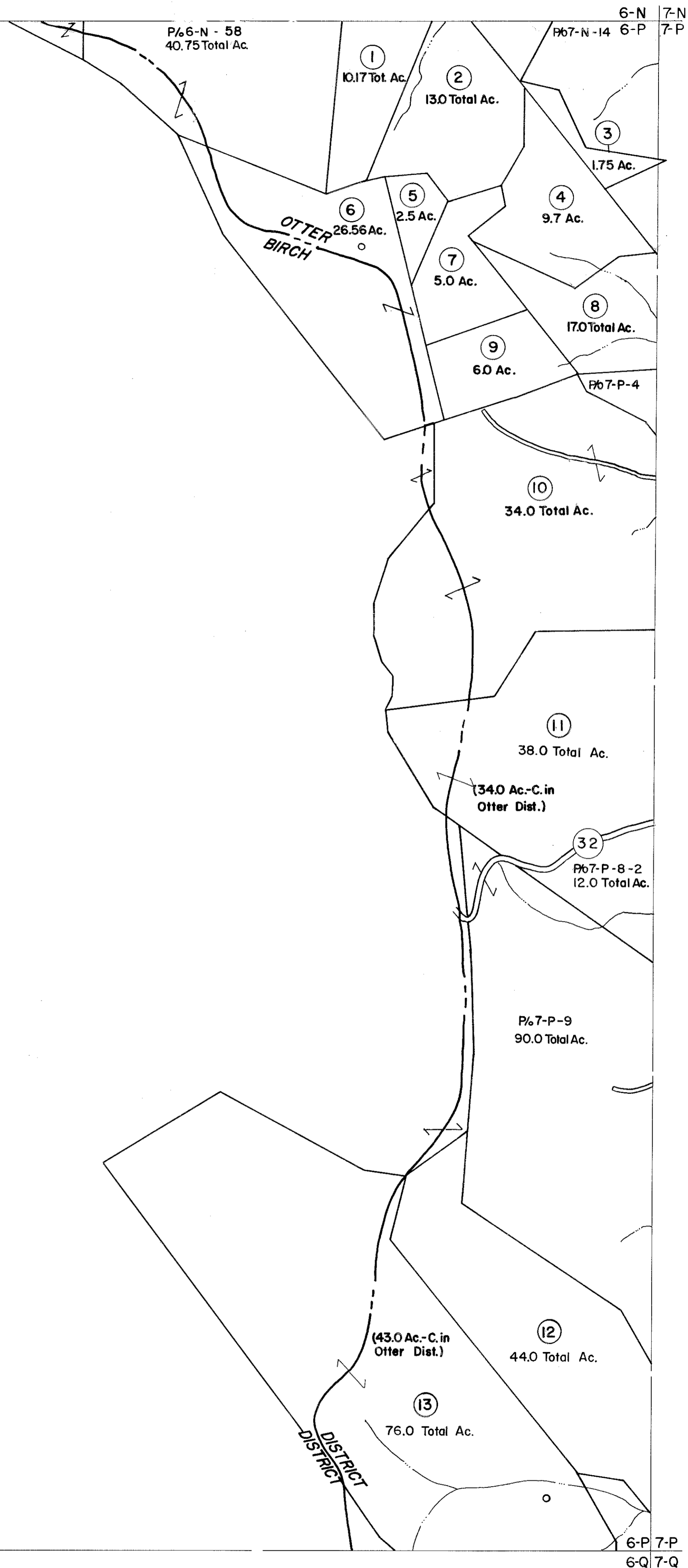


6-N
6-P

6-N
7-P

6-P
6-Q

6-P
7-Q



For Tax Purposes Only

Prepared by
VOGT, IVERS AND ASSOCIATES
 ENGINEERS-ARCHITECTS
 CHARLESTON, W.VA.
 CINCINNATI, OHIO

Property line	—————
Edge of pavement or roadway	—————
Corporation line	—————
District line	—————
County line	—————

Original lot line	-----
Deed lot number	(15)
Parcel or index number	(15)
Improvement	o
Railroad	—+—+—+—

Revisions	
1	Revised to 7-1-80 RLB
2	" " 7-1-83 OCB
3	7/1/84 RLB
4	Revised to 7-1-87 RLB
5	
6	
7	
8	

KEY MAP

6N	7N
6P	7P
6Q	7Q

BRAXTON COUNTY
 STATE OF WEST VIRGINIA
 Office of Assessor

DISTRICT
OTTER DISTRICT

SHEET NO: **6-P**

Date, Aerial Photography: 4-22-60 Date, Map: 9-10-62
 Photo No: BR-14-169 Scale: 1" = 400'