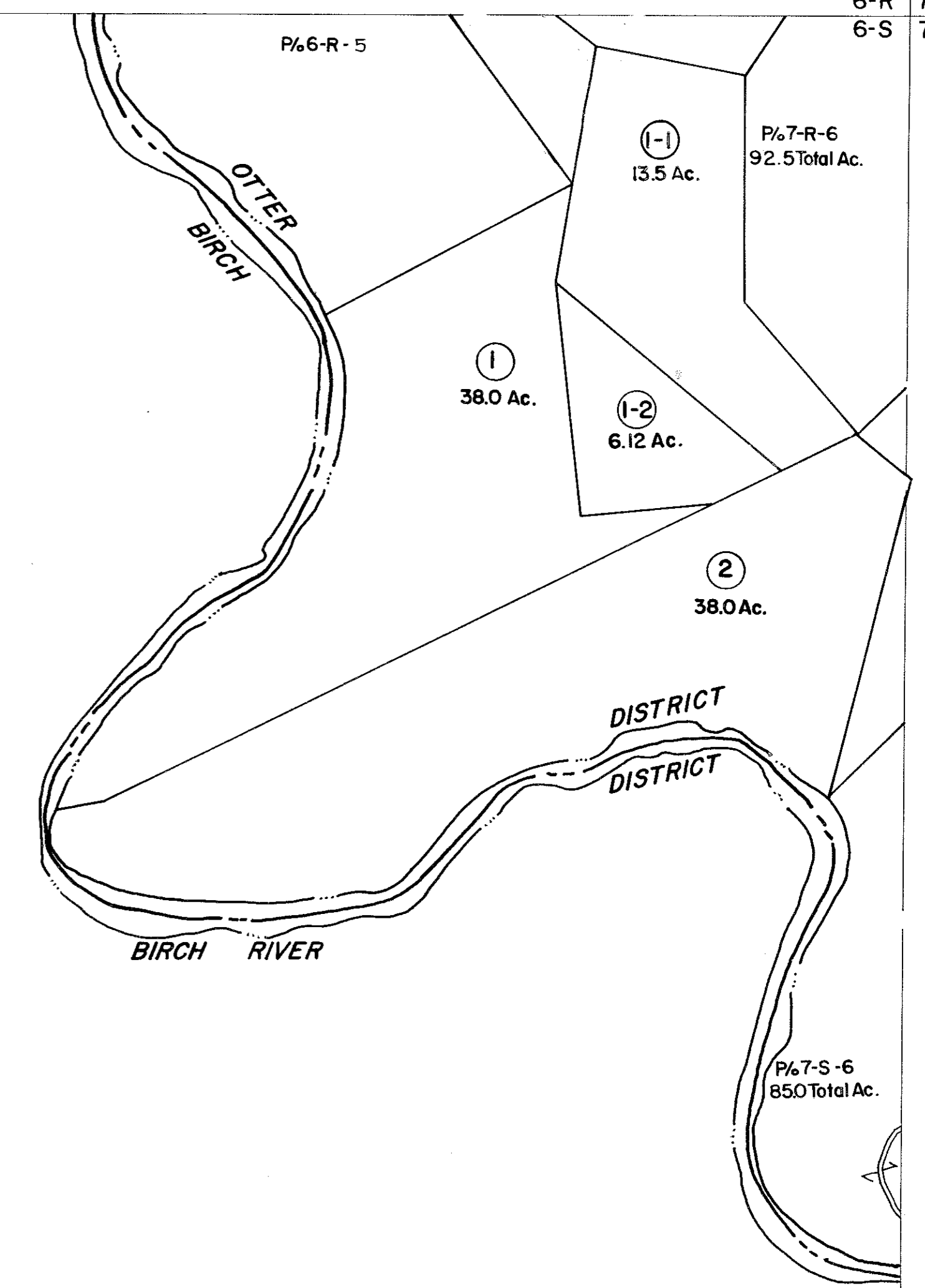


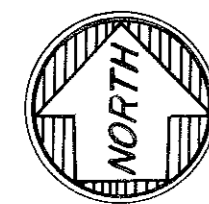
6-R
6-S

6-R 7-R
6-S 7-S



6-S

6-S 7-S
7-T



For Tax Purposes Only

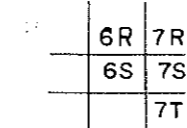
Prepared by
VOGT, IVERS AND ASSOCIATES
 ENGINEERS-ARCHITECTS
 CHARLESTON, W.VA.
 CINCINNATI, OHIO

Property line _____
 Edge of pavement or roadway - - - - -
 Corporation line - - - - -
 District line - - - - -
 County line - - - - -

Original lot line - - - - -
 Deed lot number (15)
 Parcel or index number (99)
 Improvement o
 Railroad

Revisions	
1	PARCELS 1-1, 1-2, ADDED 6-12-63 9
2	PW 10
3	Revised to 7-1-80 11
4	" " 7-1-83 C.B.G. 12
5	7/1/84 RLB 13
6	Revised to 7-1-87 14
7	15
8	16
	17
	18
	19
	20
	21
	22
	23
	24

KEY MAP



BRAXTON COUNTY

STATE OF WEST VIRGINIA

Office of Assessor

DISTRICT

OTTER DISTRICT

SHEET NO: 6-S

Date, Aerial Photography: 4-22-60 Date, Map: 9-13-62
 Photo No: BR-14-166 Scale: 1" = 400'