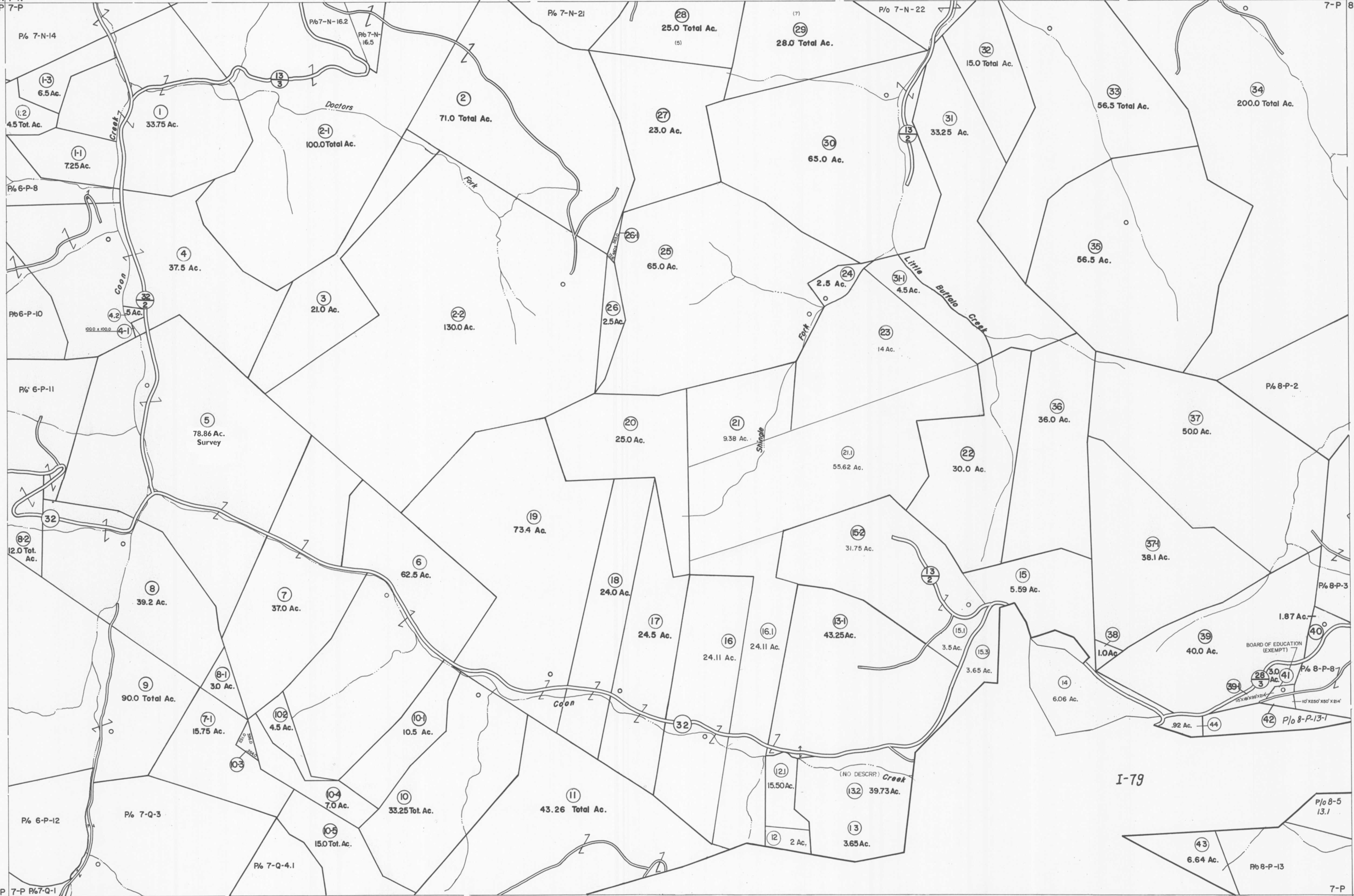


6-N 7-N
6-P 7-P

7-N 8-N
7-P 8-P



6-P 7-P P/6 7-Q-1
6-Q 7-Q

7-P 8-P
7-Q 8-Q



For Tax Purposes Only

Prepared by
VOGT, IVERS AND ASSOCIATES
 ENGINEERS-ARCHITECTS
 CHARLESTON, W.VA.
 CINCINNATI, OHIO

Property line	Original lot line	(15)
Edge of pavement or roadway	Deed lot number	(16)
Corporation line	Parcel or index number	(17)
District line	Improvement	(18)
County line	Railroad	(19)

Revisions		Date	By
1	ADD PARCELS NOS 1-1, 1-2, 1-3,	9/13/18	NLS
2	2-1, 2-2, 4-1, 7-1, 8-2, 10-1, 10-2, 10-3,	2/10/91	DSH
3	10-4, 10-5, 13-1, 15-1, 15-2, 26-1, 31-1,	4-15-98	JEB
4	37-1, 5-22-63	5/24/01	REK
5	2-13-73 Jack Reeves	6/12/02	REK
6	Revised to 7-1-80	5/11/03	SBH
7	" " 7-1-83	5/4/04	SBH
8	7/1/84 RLB	4/14/09	SBH

KEY MAP

6N	7N	8N
6P	7P	8P
6Q	7Q	8Q

BRAXTON COUNTY
 STATE OF WEST VIRGINIA
 Office of Assessor

DISTRICT
OTTER DISTRICT

SHEET NO: 7-P

Date, Aerial Photography: 4-22-60 Date, Map: 9-10-62
 Photo No: BR-14-160 Scale: 1"=400'