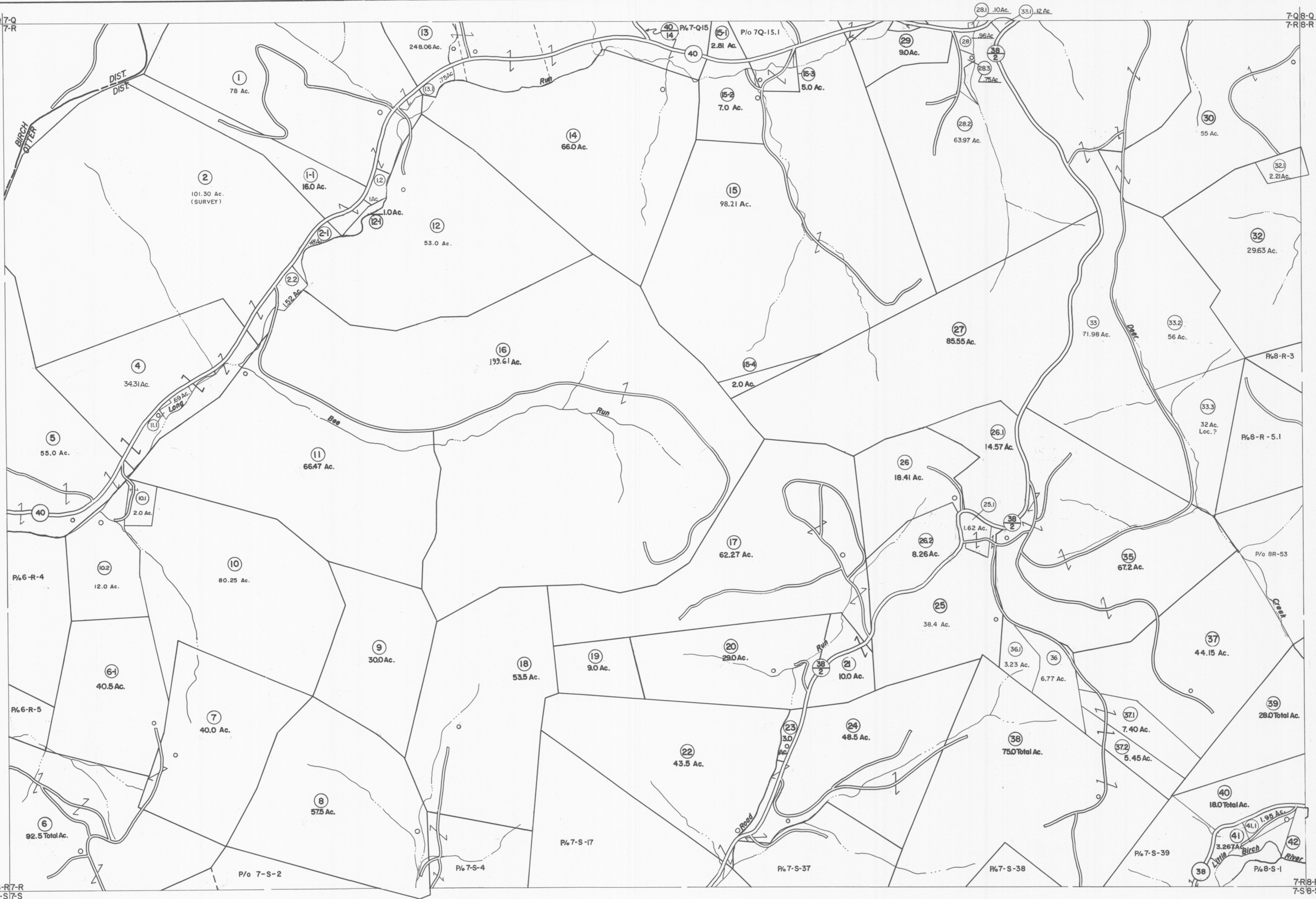


6-Q 7-Q
6-R 7-R


7-Q 8-Q
7-R 8-R



6-R 7-R
6-S 7-S

7-R 8-R
7-S 8-S

For Tax Purposes Only



Prepared by
VOGT, IVERS AND ASSOCIATES
ENGINEERS-ARCHITECTS
CHARLESTON, W.VA.
CINCINNATI, OHIO

Property line	—————
Edge of pavement or roadway	—————
Corporation line	—————
District line	—————
County line	—————
Original lot line	-----
Deed lot number	(15)
Parcel or index number	(99)
Improvement	o
Railroad	—+—+—

1	PARCELS 1-1, 2-4, 6-1, 12-1, 15-1, 15-2	9	OGIS 1-1-95	J.E.B.	17	5/7/05	S.B.H.	
2	15-3, 15-4, 16-1	ADDED 5-24-03	10	OGIS 4/25/95	S.A.J.	18	4/9/06	S.B.H.
3	Revised to 7-1-80	11	5-1-97	J.E.B.	19	4/21/08	S.B.H.	
4	" 7-1-83	12	5-1-99	J.E.B.	20	4/14/09	S.B.H.	
5	7/1/84	RLB	13	ESI 5/30/01	REK	21	3-19-10	H.D.
6	Revised to 7-1-87	14	ESI 6/12/02	REK	22	4-7-11	H.C.S.	
7	Revised to 1-1-88	15	5/1/03	S.B.H.	23	6/9/12	S.B.H.	
8	OGIS 2/10/91	DSH	16	4/5/04	S.B.H.	24		

Revisions		4/1/13	S.B.H.
		2-20-16	H.C.S.
		1/31/18	NLS
		KEY MAP	
		60 70 80	
		68 78 88	
		65 75 85	

BRAXTON COUNTY
STATE OF WEST VIRGINIA
Office of Assessor

DISTRICT	OTTER DISTRICT
SHEET NO:	7-R
Date, Aerial Photography: 4-22-60	Date, Map: 9-14-62
Photo No. 60-14-169	Scale: 1" = 400'