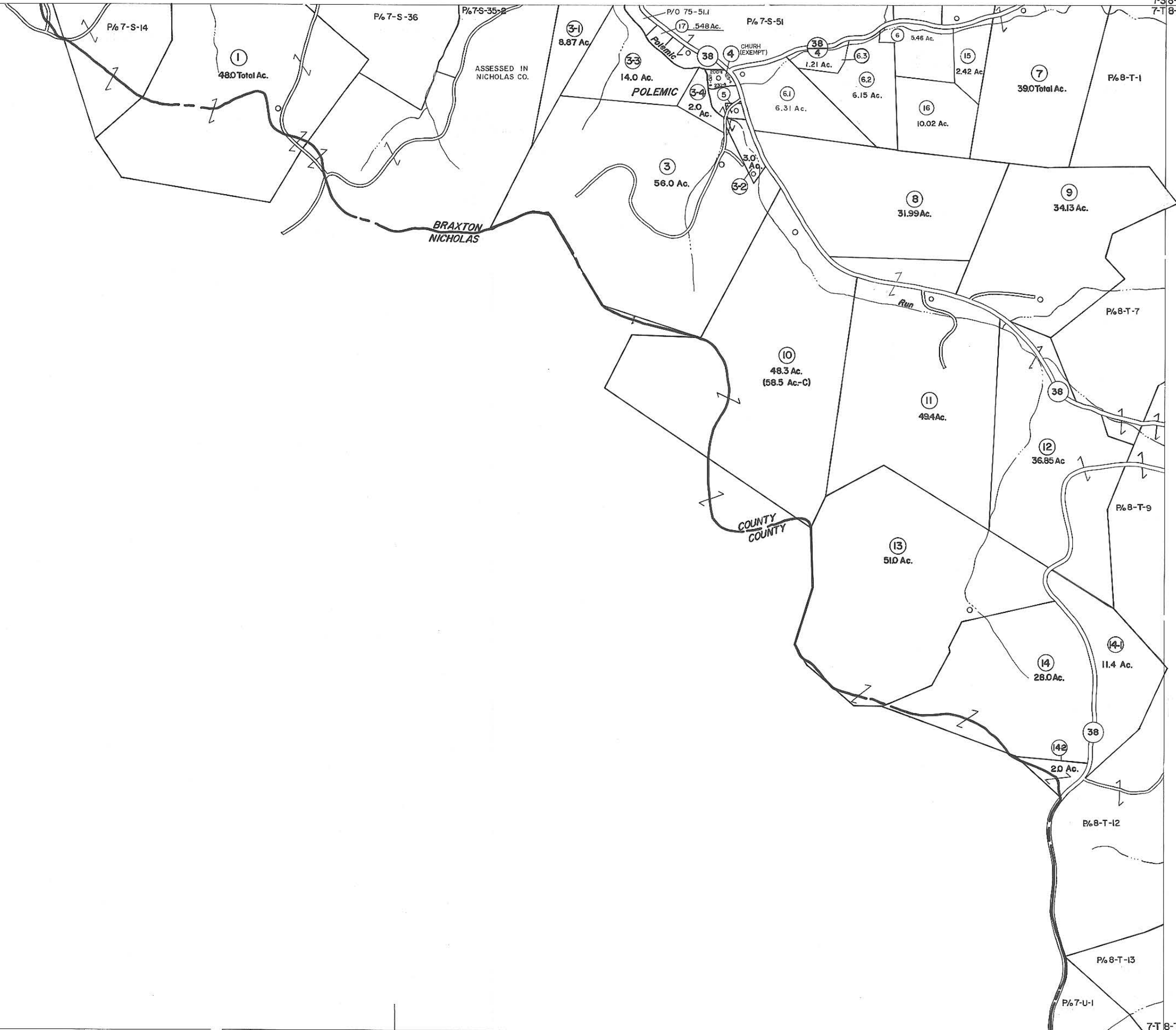


6-S-7-S
7-T

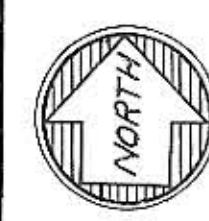
7-S-8-S
7-T-8-T



7-T

7-U

7-T-8-T
7-U-8-U



For Tax Purposes Only

Prepared by
VOGT, IVERS AND ASSOCIATES
 ENGINEERS-ARCHITECTS
 CHARLESTON, W.VA.
 CINCINNATI, OHIO

Property line ————
 Edge of pavement or roadway ————
 Corporation line ————
 District line ————
 County line ————

Original lot line - - - - -
 Deed lot number (15)
 Parcel or index number (15)
 Improvement (15)
 Railroad (15)

Revisions			
1	PARCELS-3-1,3-2,3-3,3-4,11L	9	ESI 6/12/02 REK 17
2	14-1, 14-2 ADDED 5-28-63	10	5/4/04 SBH 18
3	Revised to 7-1-83	11	4/15/07 SBH 19
4	" " 7-1-83	12	4/14/09 SBH 20
5	7/1/84 RLB	13	4/4/13 SBH 21
6	4-15-98 J.E.B	14	
7	5-1-99 J.E.B	15	
8		16	

KEY MAP

6S 7S 8S
 7T 8T
 7U 8U

BRAXTON COUNTY

STATE OF WEST VIRGINIA

Office of Assessor

DISTRICT
OTTER DISTRICT

SHEET NO: **7-T**

Date, Aerial Photography: 4-22-60
 Photo No: BR-14-164
 Scale: 1" = 400'