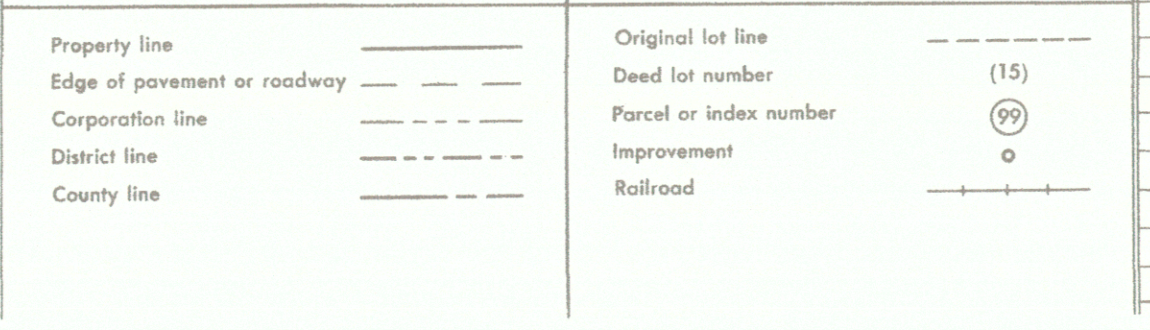


For Tax Purposes Only

Prepared by
VOGT, IVERS AND ASSOCIATES
 ENGINEERS-ARCHITECTS
 CHARLESTON, W.VA.
 CINCINNATI, OHIO



Revisions			
1	PARCELS 11-1, 21-1, 21-2, 31-1	9	2/22/15
2	ADDED 5-24-63	10	2/10/17
3	PW	11	KEY MAP
4	Revised to 7-1-85	12	3/28/19
5	" 7-1-83	13	
6	7/1/84 RLB	14	
7	Revised to 7-1-85	15	
8	Revised to 7-1-87	16	
9	OGIS 2/11/90 DSH	17	ESI 5/30/01 REK
10	O.G.I.S 1-1-95 J.E.B	18	ESI 6/12/02 REK
11	O.G.I.S 6-1-96 J.E.B	19	5/1/03 S&H
12	" 5-1-97 J.E.B	20	5/4/04 S&H
13	4-15-98 J.E.B	21	5/3/05 S&H
14	5-1-99 J.E.B	22	4/15/07 S&H
15	ESI 4-27-00 REK	23	3-19-10 H&S
16		24	4-8-11 H&S

2/22/15
2/10/17
KEY MAP
3/28/19

S&H
SLS
BMOK

7S 8S 9S
7T 8T 9T
7U 8U

BRAXTON COUNTY
 STATE OF WEST VIRGINIA
 Office of Assessor

DISTRICT
OTTER DISTRICT

SHEET NO: 8-T

Date, Aerial Photography: 4-22-60
 Photo No: BR-14-130

Date, Map: 9-23-62
 Scale: 1" = 400'