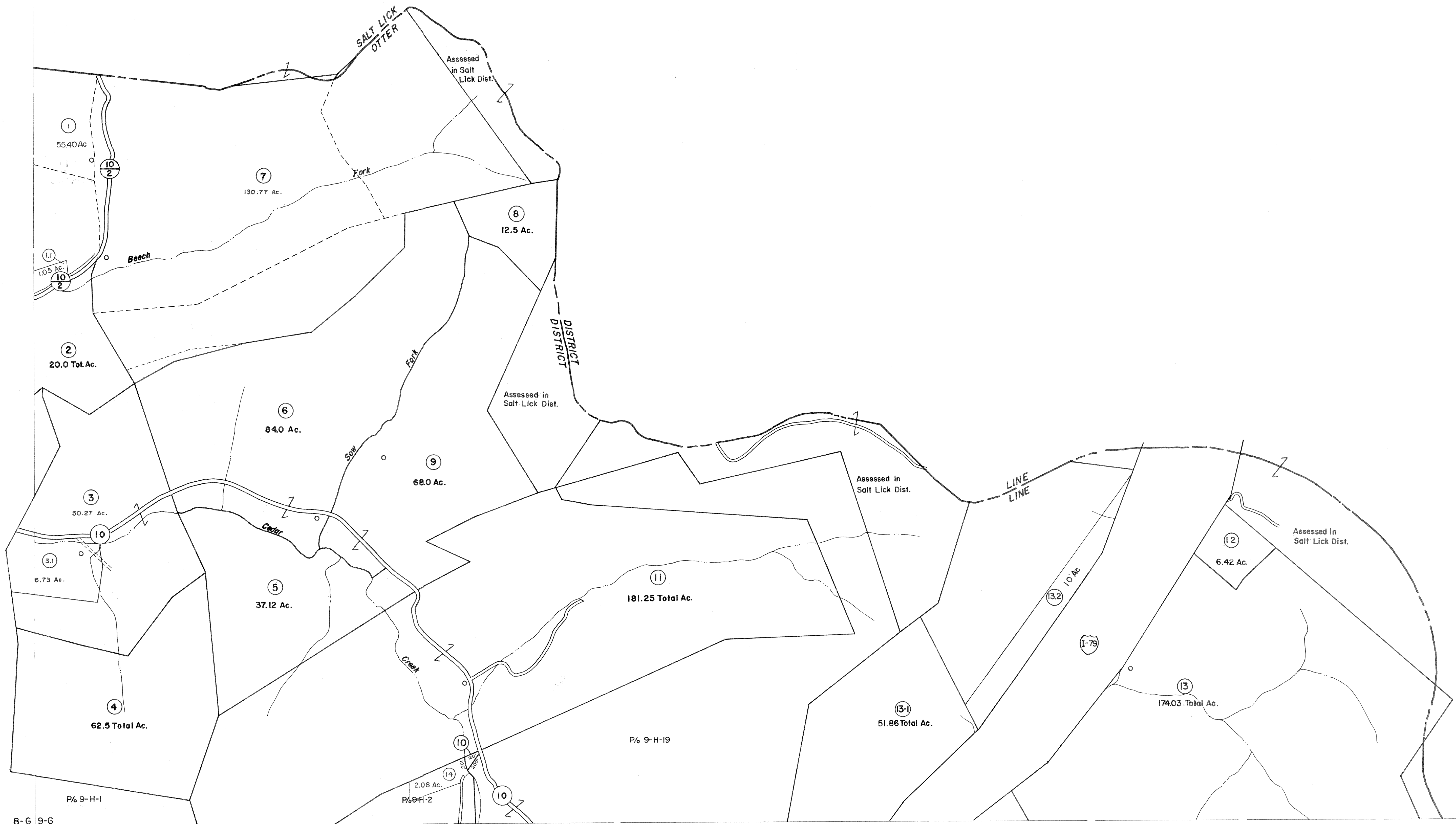
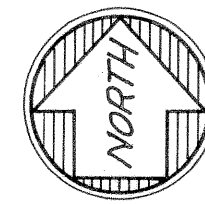


8-F
8-G 9-G



8-G 9-G
8-H 9-H

9-G
9-H



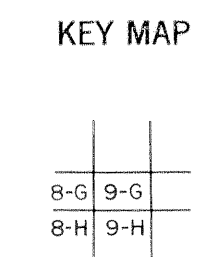
For Tax Purposes Only

Prepared by
VOGT, IVERS AND ASSOCIATES
ENGINEERS-ARCHITECTS
CHARLESTON, W.VA.
CINCINNATI, OHIO

Property line —————
Edge of pavement or roadway - - - - -
Corporation line ————+———
District line - - - - -
County line - - - - -

Original lot line - - - - -
Deed lot number (15)
Parcel or index number (10)
Improvement (P)
Railroad (R)

Revisions	
1	PARCELS 1-1,1-2,7-1,7-2,7-3,13-1
2	ADDED 6-10-63
3	PVW
4	Revised to 7-1-84
5	" " 7-1-83 OLB
6	7/1/84 RLB
7	Revised to 7-1-87
8	OGIS 2/11/91 DSH
9	OGIS 1-1-94 J.E.B
10	OGIS 4/20/95 SAJ
11	4/14/09 SBH
12	3-19-10 H+S
13	
14	
15	
16	



BRAXTON COUNTY
STATE OF WEST VIRGINIA
Office of Assessor

DISTRICT
OTTER DISTRICT

SHEET NO: 9-G

Date, Aerial Photography: 4-22-60 Date, Map: 8-14-62
Photo No: BR-14-116 Scale: 1" = 400'