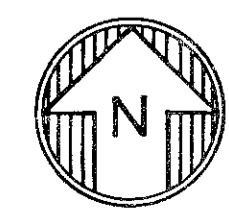
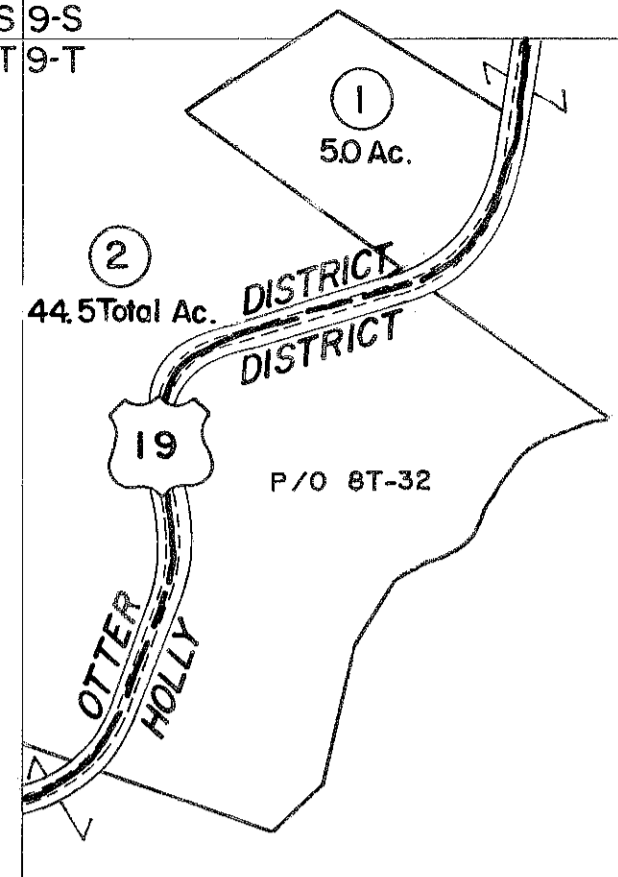


8-S 9-S  
8-T 9-T



For Tax Purposes Only

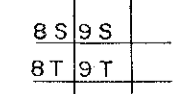
Prepared by  
**VOGT, IVERS AND ASSOCIATES**  
ENGINEERS-ARCHITECTS  
CHARLESTON, W.VA.  
CINCINNATI, OHIO

Property line —————  
Edge of pavement or roadway - - - - -  
Corporation line - - - - -  
District line - - - - -  
County line - - - - -

Original lot line - - - - -  
Deed lot number (15)  
Parcel or index number (19)  
Improvement (12)  
Railroad (13)

Revisions	
1	Revised to 7-1-80 JEF 9
2	" " 7-1-83 OBG 10
3	7/1/84 RLB 11
4	EXCALIBUR GRAPHICS 5/93 12
5	13
6	14
7	15
8	16
9	17
10	18
11	19
12	20
13	21
14	22
15	23
16	24

KEY MAP



**BRAXTON COUNTY**

STATE OF WEST VIRGINIA

Office of Assessor

DISTRICT  
OTTER DISTRICT

SHEET NO: 9-T

Date, Aerial Photography: 4-22-60  
Photo No: BR-14-127

Date, Map: 9-20-62  
Scale: 1" = 400'