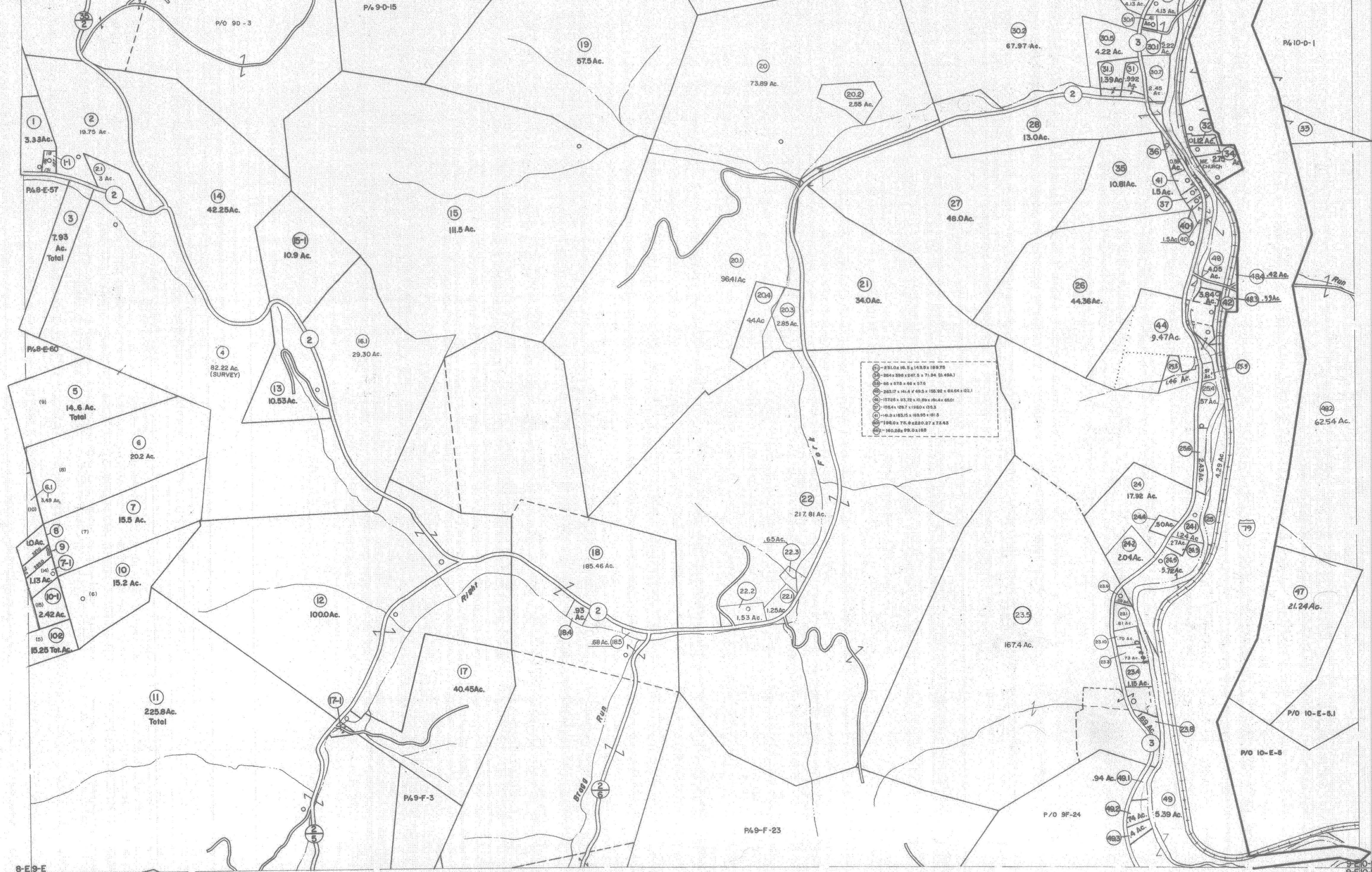


8-D-9-D
8-E-9-E

9-D-10-D
9-E-10-E



17	231.0x16.5x143.5x189.75
18	264x336x247.5x71.84(0.49A)
19	66x575x66x575
20	263.17x141.4x49.5x100.92x64.64x122.1
21	137.26x93.72x10.89x19.4x65.01
22	156.4x127.7x136.0x125.3
23	141.3x103.5x103.5x101.3
24	118.0x75.6x220.07x72.43
25	140.25x99.0x188

8-E-9-F
8-F-9-F

9-E-10-F
9-F-10-F

For Tax Purposes Only

Prepared by
VOGT, IVERS AND ASSOCIATES
ENGINEERS-ARCHITECTS
CHARLESTON, W.VA.
CINCINNATI, OHIO

Property line	---
Edge of government or roadway	---
Corporation line	---
District line	---
County line	---
Original lot line	---
Deed lot number	(15)
Parcel or index number	(10)
Improvement	---
Railroad	---

Revisions	
1	PARCEL 4-1, 5-1, 7-1, 10-1, 10-2
2	18-1, 17-1, 18-1, 18-2, 18-3, 40-1
3	42-1, 42-2, 44-1, 44-2 ALL
4	ADDED 8-24-83
5	2-26-73 Ueak Reuug
6	5-23-77
7	NOVEMBER, 1981
8	...
9	7-1-84
10	...
11	...
12	July, 1987
13	...
14	OGIS 2/11/91
15	EXCALIBUR GRAPHICS 5/93
16	...
17	OGIS 5/6/95
18	O.G.I.S 8-1-96
19	8-1-97
20	4-15-98
21	5-1-99
22	ESI 4-27-00
23	ESI 6/6/02

5/10/05	SBH
3-18-10	4-45
KEY MAP	
4/1/13	SBH
2/19/15	SBH
2-21-16	4-45
8-D-9-D	SBH
8-E-9-E	SBH
8-F-9-F	SBH
8-G-9-G	SBH
8-H-9-H	SBH
8-I-9-I	SBH
8-J-9-J	SBH
8-K-9-K	SBH
8-L-9-L	SBH
8-M-9-M	SBH
8-N-9-N	SBH
8-O-9-O	SBH
8-P-9-P	SBH
8-Q-9-Q	SBH
8-R-9-R	SBH
8-S-9-S	SBH
8-T-9-T	SBH
8-U-9-U	SBH
8-V-9-V	SBH
8-W-9-W	SBH
8-X-9-X	SBH
8-Y-9-Y	SBH
8-Z-9-Z	SBH

BRAXTON COUNTY
STATE OF WEST VIRGINIA
Office of Assessor

DISTRICT
SALT LICK DISTRICT
SHEET NO. **9-E**
Date, Aerial Photography: 4-22-60 Date, Map: 4-19-62